



## THANKS, IT'S BEEN A GREAT RIDE!

by Ken Leinbach, Executive Director

I remember a few years ago sitting in the completed Urban Ecology Center when the question was posed, "Ken, what would you have done if I had not come along?" My immediate answer was, "Dick, it doesn't matter does it, because you did come along." Dick chuckled at my reference to something bigger than us. Poignant, as I think about it now.

I first met Dick Burke back in 2000 in the double-wide trailer we fondly called home. He came not to learn about the Urban Ecology Center, but to share about the Trinity Fellows program he sponsored at Marquette University that places graduate interns in nonprofit settings. While our connection was brief, with my asking most of the questions, I immediately liked the man.



A week later, after reading the newsletter I had handed him, he called. He said he found what we were trying to do impressive and he wanted to learn more. So we met again. The second visit was longer, involving a walk to the river and a long conversation. This time he asked all the questions ... hard questions about our finances, our legal status, our staff, our board, our structure, our culture, my qualifications, our dreams for the future, etc. I remember being very impressed and wondering, "Who is this guy?"

Who is this guy indeed? Richard A. Burke was born in 1934 in Chicago. He graduated with a degree in Business from Marquette University in 1956. Despite his less than stellar grade point average, he had an uncanny knack for

*Continued on page 5*

## DON'T HAVE A BOAT? USE OURS!

### IMPORTANT CHANGES TO OUR CANOE AND KAYAK LENDING POLICIES FOR 2008

by Mike Larson, Executive Assistant

The days are getting warmer, water is flowing freely after months of being locked under the ice and summer is fast approaching ... canoe trip, anyone? It's that time of year again! Beginning May 15th, the Urban Ecology Center will once again offer you our canoes and kayaks as part of our equipment lending program. This is a FREE benefit that we offer our members to encourage outdoor recreation, reduce



*Continued on page 4*

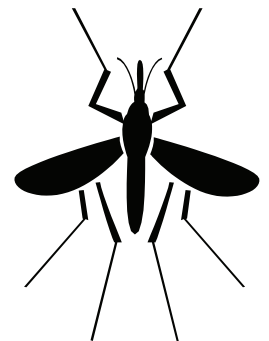
## THE POWER OF PESTS

### OR HOW THINGS REALLY GET DONE

by Joey Zocher, Washington Park Program Manager

"Oh yeah?" argues an inquisitive student, "Well, what about mosquitoes?" It's a recurring question we are asked when teaching the importance of all species. Surely no human would think a mosquito's role is more important than it is irritating!

But let's step back to look at the big picture. David Quammen takes this answer beyond the typical "they are part of the food chain" scope. In his article "Sympathy for the Devil", Quammen argues that we need to look beyond how mosquitoes impact humans. He claims the chief point of blame with mosquitoes, happens also to be the chief point of merit: They make tropical



*Continued on page 5*



## URBAN ECOLOGY CENTER

*River Reflections* is created and distributed through a team effort by the following people: Carijean Buhk, Ginger Duiven, Judy Krause, Pat Mueller, Shirley Spelt and a volunteer mailing crew.

Contributing writers: Beth Fetterley, Sujatha Govindarajan, Mike Larson, Ken Leinbach, Sarah Rohe, Susan Winans and Joey Zocher.

*River Reflections* is a publication of the **Urban Ecology Center**. The **Urban Ecology Center** is a 501(c)3 tax exempt nonprofit organization. Its facility and programming are made possible through the generous annual contributions of 82 foundations and corporations, over 2100 member and donor families and many in-kind donors.

**No tax dollars are used to operate the Urban Ecology Center.**

To make a contribution, please see page 12 for the easy to use form or call Ginger Duiven at x106.

### Our Mission

The Urban Ecology Center educates and inspires people to understand and value nature as motivation for positive change, neighborhood by neighborhood.

Our environmental community centers:

- Provide outdoor science education for urban youth.
- Protect and use public natural areas, making them safe, accessible and vibrant.
- Preserve and enhance these natural areas and their surrounding waters.
- Promote community by offering resources that support learning, recreation, stewardship and camaraderie.

### Urban Ecology Center

Riverside Park, 1500 E. Park Place  
Milwaukee, Wisconsin 53211  
(414) 964-8505  
Fax: (414) 964-1084  
uec@urbanecologycenter.org

Hours of operation:  
Monday - Thursday: 9 a.m. - 7 p.m.  
Friday & Saturday: 9 a.m - 5 p.m.  
Sunday: 12 noon - 5 p.m.

Washington Park, 1859 N. 40<sup>th</sup> Street  
Milwaukee, Wisconsin 53208  
(414) 344-5460  
Fax: (414) 344-5462  
jzocher@urbanecologycenter.org

www.UrbanEcologyCenter.org

## DROPLETS

Annual fund drive update. We launched our Annual Fund Drive in November 2007. We have raised \$234,000 so far through this essential effort to support the Center's operations. With our fiscal year ending in August the Annual Fund campaign is entering the final push to the finish line. Please consider a gift today. These donations, above your basic membership dues, make it possible for many children and families who would otherwise not have the opportunity to experience nature in the city that. Use our new convenient online giving option or the form at the back of this newsletter.

We are excited to announce the addition of two new Board members. We welcomed two new members to our Board of Directors in March. Carl Trimble and Will Nasgovitz have been serving as members of our stellar Finance Committee for over a year. Carl and Will have already made meaningful contributions of their time and resources through their committee service. We look forward to introducing them to you in the next newsletter and working with them in their new roles. Thank you to both for making the commitment to help govern the Center.

Sad to see you go. Sara Vondrachek is the type of person who can brighten your day. A bit mischeivous, she always has a joke or a play on words. Sara, a long-time Environmental Educator, is leaving us in June to return to school and train in the Montessori method. She joined the Center in 2004 as we opened our new building and expanded our program. Sara was a tremendous asset in that beginning year and the students loved her. As we grew, Sara took on more responsibilities; early mornings found her banding birds with our research program. We will miss her quick wit, great rapport with our students and her encouragement.

Happy birthday to your child! Did you know that the Urban Ecology Center offers B'Earthday Parties? We offer four themed parties for children

## WISH LIST

### For Riverside Park

If you have a donation for the Center in Riverside Park please call Judy Krause, x102.

- Air compressor
- Animal heat rocks and heat pads
- Apple cider press
- Crayons, markers, pencils
- Electric golf cart
- Garden hoe
- Gently used sweatpants
- Irons (for clothing)
- Kayaks
- Paper that has printing on one side to be reused in our printers
- Rain ponchos/jackets for little kids (kindergarten - 3rd grade)
- Reliable CD player w/disc repeat
- Reptile basking light bulbs and infrared light bulbs
- Step stools - one, two, three steps
- Triple-Beam balance scales
- Used cell phones, print cartridges, video games, and digital cameras
- Waterproof or nylon pants (adult sizes M - XXL)

### For Washington Park

If you have a donation for Washington Park, please call Joey Zocher, (414) 344-5460.

- Adult boots
- Bird Seed
- Clipboards
- Energy Star dehumidifier
- Field guides
- Film canisters
- Fishing nets
- Flat bed sheets
- GPS device
- Kites
- Kids boots
- Love seat
- Musical instruments - acoustic
- Old snow pants / sweatpants
- Plastic storage bins with lids
- Puppets
- Stopwatches
- Sweatshirts

age five and older on the weekends. At these parties kids will create, learn, play and explore indoors and outdoors. For more information, contact Jamie at 964-8505, x114.

Welcome Lemetra Griffin, Facility Coordinator, and Lindy Meer, Bookkeeper! Lemetra worked at the Northside YMCA and previously supervised crews with the Milwaukee Community Service Corps. He brings needed maintenance, automotive and carpentry skills to the Center. Lindy joined our staff after working at Catholic Urban Academies. She has a strong accounting background and also volunteers as the Treasurer of the Pregnancy Help Center.

## EVERY KID BELONGS IN SUMMER CAMP

by Beth Fetterley, Director of Education

Eight year old Sammy has just found a soft-shelled turtle along the Milwaukee River. It is visible only because it was startled when the group of summer campers came just close enough to this very well-camouflaged Riverside Park resident for it to make a run for the more protective waters. Sammy calls to his new friend, John, saying "Look at this turtle. What a weird nose!" The two excitedly watch as the turtle looks back for a moment then dives into the river. They giggle a little as the carapace disappears under the surface of the water.

Every week summer campers share memorable experiences like these, experiences that will likely bring them back to the park and will be a connection between the campers that they may not otherwise have. Why not? Because they come from different backgrounds and two sides of the Milwaukee River. As a community Center, serving diverse neighborhoods, we are blessed to be able to bring community members together from varied cultural, economic and social backgrounds. For kids exploring public green spaces, the amount of money their family makes absolutely does not matter, nor does the color of their skin or the lifestyle choices of their family. The joy of discovery and sharing in awe of nature's quirks and beauty are what it's all about.

Because building more connections between diverse communities in Milwaukee is so critical, and getting urban kids outdoors is at the core of our mission, the Urban Ecology Center offers scholarships to low-income families. As I write this article, we have many scholarships for our summer day camps still available. Spaces are

available in Riverside Park camps and also in our newly launched summer camps in Washington Park. Thanks to the 4<sup>th</sup> annual summer camp scholarship fundraiser, led by Christi and John Clancy



and Mary Allegre and David McMullen, and an amazing auction organized by Kate Muth, we have funds available again to offer these scholarships.

Please help us fill these spots! If you are a low income parent or know of low income families with kids through your neighborhood, work, church or through volunteering who would benefit from a scholarship to summer camp, contact us today. Please call Beth or Sarah at the Center for more information, share this article with them or have the family contact us directly. With your help we can fill our camps to capacity with a diverse group of kids to enjoy the wonders of summer outside in nature right here in the city!



A big thank you to everyone who participated in the "Get Snappy, Go Green" party hosted by Christi and John Clancy and Mary Allegre and David McMullen to benefit Urban Ecology Center summer camp scholarships. You helped raise over \$14,000 so every child can explore the woods.

## VOLUNTEER CORNER

by Susan Winans, Volunteer Coordinator

Unless otherwise noted, please contact Susan at x110 or [swinans@urbanecologycenter.org](mailto:swinans@urbanecologycenter.org) to sign up for the following opportunities

**Garden with Joel.** Dig in our butterfly, rooftop and rain gardens while learning about native vegetation and landscaping. Join our gardener, Joel Springsteen, weekday mornings from 9 a.m. - noon. Contact Susan, x110 for more information.

**Rock Climbing Volunteer Training.** Help others reach new heights! Join our team of trained rock climbing volunteers to help with various climbing programs. Volunteers must be at least 16 years of age. See page 9 for details.

### Do you find yourself telling others about the Center?

Become a Community Ambassador and introduce the Center to participants at community events and festivals around Milwaukee. Interested volunteers can join us for a Community Ambassador training. See page 9 for details.

**Bike to Work Week!** Give bike commuters an extra boost of energy and encouragement during Bike to Work Week. Serve breakfast on the bike path and chat with cyclists on their way to work, weekday mornings, May 12-16<sup>th</sup> from 7 - 9 a.m. Please contact Chad, x115 if you are able to help.

### Teen Adventure Challenge.

On Saturday, June 7<sup>th</sup>, help teens race around the Milwaukee River watershed by foot, bike and canoe! Volunteers help with team registration, checkpoints along the course, equipment and serve lunch. Volunteers with the necessary training and/or certification may belay, lifeguard, kayak and offer first aid. Contact Susan, x110 to sign up.

**Summer Camp Volunteers.** Be a part of the summer camp excitement! Volunteers help with registration, share their unique skills and talents with groups of campers during the week or assist with scheduled activities such as canoeing and fishing. For more information or to volunteer contact Sarah, x125.

## I'M IN THE WOODS - I'M S'POSED TO EXPLORE!

by Sarah Rohe, School Program Coordinator

It was a muddy day in the woods. The snow that had piled up all winter was melting, making it a perfect day to study the tracks that animals had left behind in the mud. One particularly excited 2nd grader, Kayana, was anxious to find any track she could. As she ran off the trail in search of more signs that animals had made, I asked her to come back to the group. Clearly disappointed that I had stopped her investigation, she yelled back "But I'm in the woods- I'm s'posed to explore!" I couldn't help but smile.

Kayana put into words what we see all the time when taking a group of kids outside. A student finds a centipede by rolling over a dead log and curiosity takes over, compelling her to look under every log to discover what else she can find. Or a child notices the brilliant yellow and orange stripe on the head of a brave Golden-crowned Kinglet perched in the bushes

just a couple feet away and suddenly each bird is a new treasure. New worlds are discovered just by taking kids outside and giving them the opportunity to explore.

Research has shown that children spending time exploring nature benefits them in many ways. In his book "Last Child in the Woods", Richard Louv suggests that consistently spending time outdoors is beneficial to children's spiritual, emotional and physical health. It can be as simple as turning off the TV and spending time in your own backyard or taking a walk to your neighborhood park.

So if you have a child or know a child (or even if you don't!), go outside and do some exploring of your own. Spring is the perfect time to look for wildflowers or migrating birds, plant a garden or search for animal tracks in the mud.



## DON'T HAVE A BOAT?...

### IMPORTANT CHANGES TO OUR CANOE AND KAYAK LENDING POLICIES FOR 2008

*continued from page 1*

consumption and thank you for your support of the Center and our mission!

Due to the increased popularity of this program and safety concerns which have arisen in the past couple of years, we are making a few changes to our lending policy for canoes and kayaks. Don't panic! Change can be a good thing! Read on for more details:

- In order to meet the increasing demand for our canoes and kayaks, we have added two new boats to our fleet! We will now be offering you a choice of one of three canoes or three kayaks for your convenience. In addition, we are replacing some of the older boats with newer and nicer ones for you to use. This means more opportunities and increased availability for our members!
- Secondly, Center staff will be monitoring water levels in the Milwaukee River to help warn you about potentially dangerous conditions on the river. In times of intense flooding, we may ask you to take the boat to a different location where the water is less rough.
- Finally, beginning this year, we are requiring all members who wish to borrow a boat through our equipment lending program to attend a Center led boating program or participate in a 30-minute Water Safety Course and pass a written water safety test before using a boat. This is a one-time requirement; once you pass the test you will be certified to borrow any of our canoes and kayaks for the rest of your life. This policy is for your safety! We want to make sure you know how to deal with potential problems, including a capsized boat, before you get in the water. Center boating events are held weekly and water safety classes will be offered twice a week (on Sunday afternoons and Thursday evenings) throughout the summer to make it as easy as

possible for you to attend a course. Please refer to page 6 for more details.

As always, the staff at the Urban Ecology Center is open to your comments and suggestions for improvement of our equipment lending program. Please contact Mike Larson at 964-8505, x126.



## THE POWER OF PESTS

*continued from page 1*

rainforests, for humans, virtually uninhabitable. As rainforests were being cleared at an exponential rate for profit, this allowed for the preservation of at least a few. Interesting concept.

I was reminded of this piece the other day when I was discussing the activities in Washington Park with a friend over coffee. Specifically, I was talking about how excited I am regarding our lagoon restoration project starting this summer. In an effort to stop erosion, reduce the geese population, increase biodiversity and beautify the park, Milwaukee County has given \$150,000 to help restore the Washington Park lagoon shoreline. In addition, the Student Conservation Association (SCA) has partnered with the

Center and the Parks again this summer, bringing in eleven urban high school youth to work on this project. "Wow, how did you manage to pull that off," questioned my naturally skeptic friend.

### HOW DID WE PULL THESE RESOURCES TOGETHER?

We and others simply asked. The Center was only one of the organizations to ask Milwaukee County to spend the money they had in Washington Park. We reminded, maybe weekly, SCA how much fun we had last summer and asked if they wanted to return. Milwaukee County Parks also reminded the SCA how much they gained from working here

last summer. We and the County Parks reminded the County how important Washington Park is as an ecosystem and a place for the community. As I listened to all of the different organizations and community members fight for the revitalization of Washington Park, I could hear the buzz in my ear.

The Center and mosquitoes have a lot in common: persistence, a solid reputation and a critical mass to swarm with. Indeed, sometimes being a pest is good for the environment! If you are interested in more information or would like to swarm with, I mean volunteer to help make the lagoon restoration project a success, please contact Joey at [jzocher@urbanecologycenter.org](mailto:jzocher@urbanecologycenter.org) or 344-5460.

## THANKS, IT'S BEEN A GREAT RIDE!

*continued from page 1*

numbers which bode well for his future in business. In the 60's he worked for Roth Distributing, an appliance company where he eventually became treasurer and later Chairman. In 1976 he had a brainstorm, and with a small amount of seed money from Roth, he started a new manufacturing company in a barn in Waterloo. With five employees, he started making a steel touring bicycle frame to fill a gap he intuited between the popular Schwinn bikes and the imported Japanese bikes. He named the company Trek.

Under Dick's leadership Trek grew into one of the largest bicycle companies in the world! Needless to say he acquired significant personal wealth. This is where Dick stands apart. As he put it, "If you are fortunate enough to gain resources in this world, you have a responsibility to give back to society". Dick did this through his Trinity Foundation from which he realized his vision of supporting a triangle of urban education, youth and leadership development.

I knew none of this when we first talked. I just knew that I was talking to a very genuine man; a man who listened; a man who was exceptional; a man with whom I had immediate rapport.

A few months after those early meetings, Dick called and asked that I join him in the Greater Milwaukee Foundation's offices where he housed the Trinity Foundation. I knew something was brewing, but had no idea exactly what.



*Thanks to Dick Burke's generosity, Urban Ecology Center students, and our members, can go out for a ride on one of our fleet of Trek bicycles.*

(For a full recap of this amazing day in the life of the Center please visit [www.urbanecologycenter.org/dickburke](http://www.urbanecologycenter.org/dickburke).) In short, our little ecology center in the city fit the Trinity triangle like a glove. Dick

- totally unsolicited - offered to support our dream for a new building with two million dollars! All he asked in return was to join our board. "I'm an activist with my money, Ken", he said, "You need not worry, I don't need to control. I just like to be involved."

Dick developed a very close relationship with many of us at the Center. For me he served as a friend and a mentor. He chaired our building design committee and, man, did we have fun. Slides into the building, hidden rooms, a tower, room for a tipi on the roof, unusual recycled materials - it was crazy! And he supported it all. He helped us buy our buses, helped us build our playground, helped us start Washington Park and helped us build our bridge. He helped us in so many, many ways. I will, we all will, really miss him.

Richard A. Burke, Founder and Chairman of Trek Bicycle Corporation, died peacefully March 10, 2008 at the age of 73 from complications following heart surgery. One of his final statements in the hospital when he knew he was going to die was, "Be sure to thank everyone, It's been a great ride".

## MAY - JUNE CALENDAR OF PROGRAMS

Unless otherwise indicated, participants meet at the Urban Ecology Center, 1500 E. Park Place. For general information call (414) 964-8505 or visit [www.UrbanEcologyCenter.org](http://www.UrbanEcologyCenter.org). Scholarships are available for all fee-based programs, please contact Beth at 964-8505, 103, for details. Programs marked with an \* require physical movement through an unpaved, wooded area. We are happy to work with you regarding accomodation. Please call Beth at 964-8505, 103, before signing up for a program if you have accessibility concerns.

### SPECIAL EVENTS

#### BICYCLER BREAKFAST

Weekday mornings

May 12 - 16

7 - 9 a.m.

For bicycle commuters

Free - donations appreciated

Thank you to bicycle commuters for reducing consumption of fossil fuels! We'll treat you to breakfast at the Urban Ecology Center. Join fellow bike commuters for free breakfast on the Oak Leaf Recreational Trail.

#### BICYCLER BREAKFAST CELEBRATION

Saturday, May 17

9 - 10:30 a.m.

For bicycle commuters

Free - donations appreciated

Call to register, 964-8505

Bike-to-work-week culminates at the Center with a Saturday morning celebration. Socialize with other bicycle commuters and share your bicycling goals for the rest of the season! Breakfast is provided.

#### AN EVENING WITH MARILYN CLEMENS

Tuesday, June 3

6 - 8 p.m.

For adults

\$5 for Urban Ecology Center or Alliances Françaises members (Nonmembers - \$10)

Call to register, 964-8505

Meet Marilyn Clemens, an urban designer, landscape architect and writer. Marilyn is an international leader in urban design and landscape architecture. Her presentation will focus on new Parisian gardens built on abandoned industrial lands as part of large urban design projects (Citroen, Bercy, La Villette, Belleville, the Promenade Plantee and the Atlantic Garden). Brought to you by the Federation of Alliances Françaises USA, Alliance Française de Milwaukee and the Urban Ecology Center.

#### TEEN ADVENTURE CHALLENGE\*

Saturday, June 7

8:30 a.m. - 4 p.m.

For teams of 4 teens with an adult accompaniment

\$60 per team

Registration required by May 23<sup>rd</sup>, call 964-8505

Defy everyone's expectations! Try this adventrue race for co-ed teams of 4 teens and an adult. Bike, hike, rock climb, canoe the Milwaukee River and take part in mystery events! T-shirt and lunch included. Contact Chad at [cthomack@urbanecologycenter.org](mailto:cthomack@urbanecologycenter.org). Come to volunteer, contact Susan at [swinans@urbanecologycenter.org](mailto:swinans@urbanecologycenter.org). Or just come to cheer the teams on along the route!

#### SUMMER SOLSTICE CELEBRATION ON THE HILL

Thursday, June 21

6:30 p.m.

For everyone

Free - donations appreciated

Celebrate the solstice by drumming, sharing poetry and witnessing the sunset with local artist Harvey Taylor. Meet on the top of the "sledging hill". Bring a drum (or use one of ours), a favorite song or poem to share and a blanket to sit on.

### URBAN ADVENTURES

Advanced registration is required for all Urban Ecology Center Urban Adventures. Payment due at time of registration.

**Cancellation Policy:** When payment is required in advance for a program, you may cancel up to 48 hours in advance without penalty. If the Center cancels a program for any reason, the payment will be refunded or can be used toward a future program. Call the Center at (414) 964-8505 to register at least two days before the trip. Trips run as scheduled rain or shine, at the discretion of the trip leader.

#### WATER SAFETY COURSE FOR CANOE LENDING PROGRAM

Wednesdays, May 14 & 28, 6 - 6:30 p.m.

Thursdays, June 12, 19 & 26, 6 - 6:30 p.m.

Saturdays, June 14, 21 & 28, 10 - 10:30 a.m.

For those members who wish to borrow our canoes, but open to everyone

Free - donations appreciated (Nonmembers - \$5)

Registration required, call 964-8505

Interested in borrowing our canoes? Come take a 30 minute water safety course to make sure that you are ready to get out on the water. This is a requirement of the canoe/kayak lending program.

#### OPEN CLIMBS ON THE TOWER WALL

Tuesdays, May 13 - June 3  
4 - 6 p.m.

Sundays, June 15 - 29  
3 - 5 p.m.

For everyone

Adults: \$10

(Nonmembers - \$15)

Children: \$8

(Nonmembers - \$12)

Registration required,  
call 964-8505

Unwind after school or work by climbing on our three story rock wall! Harnesses and belayers provided. All climbers must have a completed and signed waiver before climbing, available at [www.urbanecologycenter.org](http://www.urbanecologycenter.org). Please call ahead to register, no walk-ins.

#### RIVER RHYTHMS CANOE TRIP\*

Wednesdays, June 11 -  
August 27

5:30 - 9:30 p.m.

For adults &  
accompanied children

Adults: \$25

(Nonmembers - \$30)

Children: \$15

(Nonmembers - \$20)

Call to register, 964-8505

Paddle down the Milwaukee River to Pere Marquette Park. Enjoy music and festivities at River Rhythms, then paddle back. Dress for the weather. Meet at the Milwaukee Rowing Club Boat House (1990 N. Commerce St.) Each week fills quickly so sign-up early!

June's performers are:

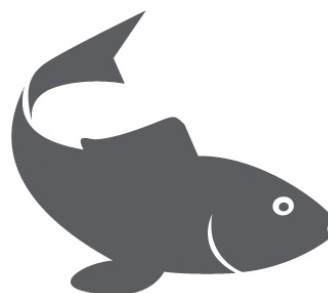
June 4 - Daryl Stuermer  
Fusion guitarist.

June 11 - Steve Cohen  
Blues.

June 18 - Swing Nouveau  
Big band and swing tunes  
of the 30's, 40's,  
50's & 90's.

June 25 - 5 Card Stud  
Lounge music.

For more information about River Rhythms visit [www.westown.org](http://www.westown.org)



## FAMILY PROGRAMS

**PLEASE NOTE: THE URBAN ECOLOGY CENTER WILL BE CLOSED ON MEMORIAL DAY, MONDAY, MAY 26, AND WILL CLOSE AT NOON ON SATURDAY, JUNE 21.**

## WASHINGTON PARK:

## NEST QUEST WORKSHOP: WASHINGTON PARK

Saturday, May 3  
7:45 a.m. - noon  
For families with children ages 8 and older  
Free - donations appreciated  
Washington Park

Cornell University and the Center are looking for individuals and families to participate in a national pilot program to monitor birds nesting in your neighborhood. Participants become "citizen scientists," learning how to collect data that will be used by the world's most renowned bird scientists.

## FAMILY SERIES:

## A WORLD OF CLIMBING\*

Sunday, May 18  
2 - 4 p.m.  
For families  
\$5 or \$15 for families of 4 or more (Nonmembers - \$8 or \$30 for families of 4 or more)  
Registration required by May 16<sup>th</sup>, call 964-8505

Come with your family and climb the spider web or the Center's climbing wall and learn about some things that climb in nature.

## FINDING YOUR WAY

Sunday, June 15  
For families with children ages 7 and older  
\$5 or \$15 for families of 4 or more (Nonmembers - \$8 or \$30 for families of 4 or more)  
Registration required by June 13<sup>th</sup>, call 964-8505

Kids and parents will work together to learn how to use a compass and navigate to a hidden treasure in the park.

## CHICAGO'S GREEN FESTIVAL

Saturday, May 17  
9 a.m. - 9 p.m.  
For everyone  
\$50 per person  
Meet us at:  
East end of the Home Depot Parking lot on Port Washington Road (9:10 a.m.) or Brown Deer Road Park and Ride (9 a.m.)  
Register by May 14<sup>th</sup>, call 964-8505

Celebrate with us at Chicago's Green Festival! Travel by deluxe motor bus with folks from the Center, Schlitz Audubon Nature Center and Riveredge Nature Center. Get inspired, have fun and learn about greening your life. Events include how-to workshops, green films, a green career session, green businesses, organic food and live music. Go to [www.greenfestivals.org](http://www.greenfestivals.org) for more information. Fee includes travel, entry to the festival and dinner at the Parthenon. For more information contact Barbara Gilmore at (262) 284-4286 or [BDGIL2210@aol.com](mailto:BDGIL2210@aol.com).

## STORYTIME IN THE PARK\*

Saturdays, May 17 & June 21  
10 - 11 a.m.  
For kids ages 4 & older accompanied by an adult  
\$3 (Nonmembers - \$5)  
Accompanying adults free  
Call to register, 964-8505

Bring your little ones and join us for a story and a short hike in Riverside Park.

## ANIMAL CARE WORKSHOP

Saturday, May 17  
10:30 a.m. - noon  
\$4 or \$12 for families of 4 or more (Nonmembers - \$7 or \$24 for families of 4 or more)  
For kids ages 6 & older accompanied by an adult  
Call to register, 964-8505

An animal care workshop for people who would like to learn the basics for caring for cold-blooded critters.

## NATURE DETECTIVES\*

Sundays, May 25 & June 29  
2 - 3:30 p.m.  
For everyone  
\$4 or \$12 for families of 4 or more (Nonmembers - \$7 or \$24 for families of 4 or more)  
Call to register, 964-8505

Discover the natural world as we explore Riverside Park using magnifying glasses and doing scavenger hunts.

## WONDERFUL WATER\*

Sunday, June 22  
1 - 2:30 p.m.  
For kids ages 5 & older accompanied by an adult  
\$4 or \$12 for families of 4 or more (Nonmembers - \$7 or \$24 for families of 4 or more)  
Call to register, 964-8505

Learn about water, do some fun experiments and take a hike to the Milwaukee River.

## ANIMAL FEEDING TIME

Saturdays  
1 - 2 p.m.  
For everyone  
Free - donations appreciated

Do you know what a snake has for lunch? Help feed the Center's resident turtles and snakes as you learn about the animals that inhabit the river valley.

## SCIENCE SATURDAYS AND SUNDAYS

Drop in program  
Saturdays,  
9:30 a.m. - 4:30 p.m.  
Sundays,  
12:30 - 4:30 p.m.  
For adults & accompanied children  
Free - donations appreciated

Discover the world of science through self-led interactive activities and crafts.

**May:** Learn about amphibians and what makes them so interesting.

**June:** Summer is a time when butterflies flutter through the air. Learn about butterflies and try to catch some in Riverside Park.

## HIGH SCHOOL EXPLORERS

## MILWAUKEE RIVER TEEN HIKE\*

Saturday, May 17  
3 - 5 p.m.  
For teens  
\$5  
Call to register, 964-8505

Join other teens for an afternoon hike along the Milwaukee River.

## ART AT UEC

## THE TOOLS THREE ARTISTS USE TO EXPRESS THEIR VISION

Opening: Sunday, May 4  
2 - 4 p.m.  
For everyone  
Free - donations appreciated  
Call to register, 964-8505  
Show runs through late June

Carolyn Snow uses vivid acrylic paints layered with materials found in nature, sometimes expressionistic, often primitive. Leanne de Muijnck's "Icescapes" is an amazing series of black and white abstract nature photography. Nancy Aten has realigned her work with her ecological passions and crafts small monotypes, using materials from nature and watercolor field sketches.

## URBAN WILDERNESS PROJECT

Opening: Sunday, July 6  
2 - 4 p.m.  
For everyone  
Free - donations appreciated  
Call to register, 964-8505  
Show runs through late September

Eddee Daniel's Urban Wilderness Project uses photography to promote the interrelationship of urban and natural environments. The project celebrates the joy of experiencing nature in an urban setting, documents conditions within the Milwaukee River watershed and proposes a vision for the preservation and restoration of natural areas. More about the project and his work can be seen at [www.eddeedaniel.com](http://www.eddeedaniel.com).

## ADULT LEARNING

**ECO-HOMES SERIES:****SAFE SLEEPING**

Monday, May 12  
6:30 - 8 p.m.  
For adults  
\$20 (Members - \$15)  
Call to register, 964-8505

Snuggling up in bed with a good book sounds cozy, but is it a healthy place to be? We spend 1/3 of our lives sleeping so it's important to make sure our bodies are resting in a healthy, nurturing environment. Our experts will share information about creating a non-toxic and environmentally sound bedroom.

**NATURAL LAWNS**

Tuesday, June 9  
6:30 - 8:30 p.m.  
For adults  
\$20 (Members - \$15)  
Call to register, 964-8505

Join Amy Joyce, Co-Director of Healthy Communities Project, for a workshop on how to create a beautiful, sustainable lawn that is safe for your family, pets and the environment.

**LIBRARY OF SUSTAINABILITY OPEN HOURS**

Sundays, Noon - 2 p.m.  
Mondays 4-7 p.m.  
For adults  
Free - donations appreciated  
Call to register, 964-8505

Visit the Center's Library of Sustainability for ideas to beautify your home while honoring the environment. This is a hands-on library of sample products for home construction and interior decorating. Resource person available.

**SNAKE SURVEYS\***

Wednesdays, May 7, 21 & June 4  
6 p.m.  
For adults & accompanied children  
Free - donations appreciated (Nonmembers - \$5)  
Call to register, 964-8505

Riverside Park is one of the few remaining areas where the Butler's Garter Snake thrives. Put on your scientist hat and join us for a survey of the park's snake community. Dress for the weather and wear clothes that can get pooped on!

**BIG BIRD DAY IN MILWAUKEE COUNTY\***

Thursday, May 8  
8 a.m.  
For adults & accompanied children  
Free - donations appreciated  
Call to register, 964-8505

No, not the yellow bird from Sesame Street. Help us count as many birds as we can find in Milwaukee County in one day in this fun research challenge. We'll visit birding hot spots until we drop. Bring a lunch.

**BUTLER'S GARTER SNAKE LECTURE**

Sunday, May 11  
3 - 4:30 p.m.  
For adults  
\$5 (Nonmembers - \$8)  
Call to register, 964-8505

Learn about our research on the threatened Butler's Garter Snake in Riverside Park and the overall condition of these snakes here.

**OUT OF SIGHT BUT ON OUR MINDS:**

*Milwaukee County Zoo Acting Locally and Globally*  
Speaker: Craig Berg, Curator - Reptile & Aquarium, Milwaukee County Zoo  
Tuesday, May 13  
7 p.m.  
For adults  
Free - donations appreciated  
Call to register, 964-8505

When people think of the Zoo they usually imagine displays of exotic animals, but did you know that the majority of Zoo conservation projects have been devoted to Wisconsin's wildlife? Learn about their conservation programs.

**INTERNATIONAL MIGRATORY BIRD DAY BANDING\***

Saturday, May 17  
5 - 11 a.m.  
For adults & accompanied children  
Free - donations appreciated  
Call to register, 964-8505

Join people all over the world in celebrating the birds that transcend political boundaries and help make the world a smaller place. You may even be able to thank a bird as you release it from your hand. Please call Tim Vargo x116 for details.

**BRAZIL: VICARIOUSLY**

Thursday, May 22  
7 - 8:30 p.m.  
For adults & accompanied children  
Free - donations appreciated  
Call to register, 964-8505

Join Cheri and Tom Briscoe, UEC volunteers, to hear about an eco-tour of three very different regions of Brazil - Iguacu Falls in the south, the Pantanal in the central west region and the Amazon. They will give an overview of the ecology, beauty and challenges of this fragile diverse, land.

**URBAN ECOLOGY CENTER BOOK CLUB**

Saturdays, May 24 & June 28  
10 - 11 a.m.  
For adults  
Free - donations appreciated  
Call to register, 964-8505

The Bookclub meets once a month to discuss an environmentally themed book. Come enjoy the conversation and refreshments.

May: *Blessed Unrest*  
by Paul Hawken.

June: *Three Cups of Tea* by G. Mortenson & D.O. Relin.

**DNR FROG & TOAD SURVEY**

Tuesday, May 27  
8 p.m. - midnight  
For adults & accompanied children  
Call to register, 964-8505

Help add to the DNR's statewide database of frogs and toads, run by citizen scientists. Dress for the weather and wear footwear that can get muddy. We will cover western and southern Milwaukee County.

**BIRD WORKSHOPS: BIRD SONG**

Part 1:  
Thursday, May 29, 6:30 p.m.  
Part 2:  
Thursday, June 26, 7 p.m.  
For adults  
\$5 (Nonmembers - \$10)  
Free for birding volunteers  
Call to register, 964-8505

This lecture will explore the mechanisms behind bird vocalizations and will be followed by a twilight bird-watching stroll.

**BIRDING BY CANOE**

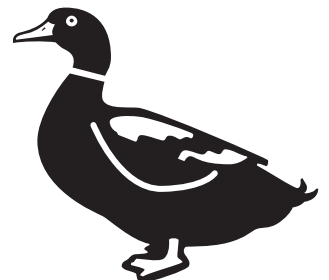
Saturday, May 31  
8 a.m. - 4 p.m.  
For adults  
\$25 (Nonmembers - \$30)  
Call to register, 964-8505

Join us as we paddle the upper stretches of the Milwaukee River on the lookout for spring migrants. Bring a lunch and water. Canoes, paddles and PFDs provided.

**THE BADGER #2 FISH-STOCKING CAR**

Speaker: Don Meyer, Manager, Mid-Continent Railway Museum  
Tuesday, June 10  
7 p.m.  
For adults  
Free - donations appreciated (Nonmembers - \$5)

Before proper road systems, fish were transported for stocking in the luxury of custom designed rail cars. This presentation features the design and use of Badger #2, a rail car operated from 1891-1935 by the Wisconsin Conservation Commission, as well as recent plans for restoration and exhibition by the Mid-Continent Railway Museum.

**BIRD BANDING\***

Tuesdays, May 6, 13 & 20  
Early mornings  
For adults & accompanied children  
Free - donations appreciated  
Call Tim Vargo x116 for information or to register

Join us for coffee and an up-close look at migratory birds.

## INTEREST GROUPS

**EARLY MORNING BIRDWALKS\***

Thursdays  
8 a.m.  
For adults & accompanied children  
Free - donations appreciated

Interested bird watchers are invited to explore with us.

**UEC PHOTO CLUB**

Thursdays, May 1 & June 5  
6:30 p.m.  
For adults  
Free - donations appreciated

Explore nature in an artistic light and develop new skills.

**KNITTING CIRCLE**

Sundays, May 4 & June 8  
3 - 4:30 p.m.  
For everyone  
Free - donations appreciated

If you are new to knitting or an experienced knitter, please join us for a cup of coffee, good conversation and knitting.

**URBAN ECHO POETS**

Thursdays, May 8 & June 12  
7 p.m.  
For adults  
Free - donations appreciated

Our purpose is to observe and experience nature, then to express these observations in poetry and essay. We will read and write and appreciate poetry with images from nature at its core.

**URBAN STARGAZERS**

Thursdays, May 8 & June 12  
7 p.m.  
For adults  
Free - donations appreciated

Join us for information and stargazing.

**FRIENDS OF REAL FOOD**

Wednesdays, May 14 & June 11  
6 - 8 p.m.  
For adults  
Free - donations appreciated  
Call to register, 964-8505

Share our potluck dinner and enthusiastic discussion.

**May: Organic Gardening Tips.**

No food can be fresher or more local than food you grow yourself. Come learn about this cost effective, fun way to eat organically.

**June: From Farm to Fork - Strengthening the Food System in the Inner City of Milwaukee.**

Young Kim, Executive Director of the Fondy Food Center, will inform us about their program to encourage growing, selling and cooking nutritious foods.

**VEGETARIAN POTLUCK**

Thursdays, May 15 & June 19  
6:30 - 8 p.m.  
For adults & accompanied children  
Free - donations appreciated

Bring a plate and fork along with your meatless dish to pass.

**PATHS TO A SUSTAINABLE FUTURE**

Tuesdays, May 20 & June 17  
6 - 8 p.m.  
For adults  
Free - donations appreciated (Nonmembers - \$5)  
Childcare available: \$4 (Nonmembers - \$6)  
Call to register, 964-8505

**May: Potluck & Discussion: Visions of Post-Carbon Milwaukee.** Please bring a dish to pass (dinnerware provided) and your vision of life in Milwaukee after a transition away from fossil fuels.

**June: Film Screening - *Escape from Suburbia*.** The sequel to the award-winning film, *The End of Suburbia*, about the future of the American dream after the oil age. This film focuses on viable alternatives for communities working at the local level.

**SAVOR THE TASTE OF SUMMER**

Thursdays, May 22 & June 19  
6 - 8:30 p.m.  
For adults  
\$25 for Urban Ecology Center or CSA members (Nonmembers - \$35)  
Call to register, 964-8505

**May: Introduction to Food Preservation.** Join us for a lecture and demonstration of hot water bath canning and other techniques. Handouts, recipes and tips available. No hands-on participation. This is the basis for all other canning classes this year.

**June: First Fruits.** Learn how to preserve the first fruit of the season to enjoy in the dark days of winter. This class is hands-on; participants can berry fruits into jams and preserves. Canning materials, fruit, instructions and recipes available.

## VOLUNTEER OPPORTUNITIES

**VOLUNTEER ORIENTATION**

Saturdays, May 3, June 14 & Friday, June 20  
10:30 a.m. - noon  
Thursdays, May 22 & June 26  
6:30 - 8 p.m.  
For adults & accompanied children ages 12 & up  
Free - donations appreciated  
Call to register, 964-8505

Learn about our programs and how to get involved.

**BURDOCK BRIGADE**

Tuesdays and Saturdays, May 3, 17, June 5 & 19  
9 - 10:30 a.m.  
Free - donations appreciated  
For adults & accompanied children

Have a hands on impact on our natural world by helping increase the biodiversity Riverside Park.

**SATURDAY STEWARDS**

Saturdays, May 10, 24, 31, June 14 & 28  
9 - 10:30 a.m.  
For adults & accompanied children  
Free - donations appreciated  
Call to register, 964-8505

Start your weekend by volunteering! Please sign up.

**ROCK CLIMBING VOLUNTEER TRAINING**

Tuesday, May 6  
5:30 - 7:30 p.m.  
For anyone age 16 & older  
Free - donations appreciated  
Call to register, 964-8505

Join our team of trained rock climbing volunteers and help with climbing programs of all kinds! You will learn our policies and procedures for belaying climbers and facilitating climbing programs. Attendance is limited and pre-registration is required.

**COMMUNITY AMBASSADOR TRAINING**

Wednesday, May 14  
5:30 - 7 p.m.  
For adults  
Free - donations appreciated  
Call to register, 964-8505

Learn how to represent the Center at events and festivals around Milwaukee. Light refreshments will be served.

## URBAN ECOLOGY CENTER TOURS

**WEDNESDAY WALK WITH KEN**

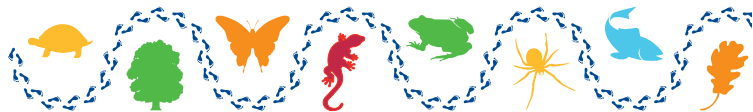
Wednesdays  
9 a.m. - Building  
10 a.m. - Riverside Park  
For adults & accompanied children  
Free - donations appreciated  
Call to confirm, 964-8505

Explore Riverside Park and/or our green facility with Executive Director Ken Leinbach (occasional staff substitution).

**BETH'S BUILDING TOUR**

Wednesdays  
5:30 - 6:30 p.m.  
For adults & accompanied children  
Free - donations appreciated  
Call to register, 964-8505

Explore our green facility with Director of Education Beth Fetterley. (occasional staff substitution).



## COSMIC COLORS

by Sujatha Govindarajan, Community Volunteer, Urban Stargazers

Often we come across astounding, breathtaking photos of astronomical objects (galaxies, nebulae, star clusters, etc.) in astronomy magazines. However the views we typically get from most amateur telescopes do not resemble these photos. We are frequently asked about this difference at our public viewing sessions, so I am going to briefly address this question here.

Astronomical objects emit light in a wide range of colors, each corresponding to a particular energy of electromagnetic radiation. With our naked eyes, we see only a tiny part of their light, often called the “visible-region” of the electromagnetic spectrum. Our eye is the detector of this light and has a limited range which it can see (the visible-region). To get information from the rest of the light emitted by the universe, we need detectors

that are able to capture this light. This is accomplished in advanced telescopes by attaching special instruments capable of detecting light in various energies.

Hubble Space telescope (HST) is one such telescope, producing brilliant color images of the universe. The final color images from the HST are produced by a complex process. Hubble doesn't use a film. Rather, its cameras record light from the universe with special electronic detectors. These detectors produce images of the cosmos not in color, but in shades of black and white. Finished color images are actually combinations of two or more black-and-white exposures to which color has been added during image processing. These final images contain information from the light in the “visible-region” plus those that are invisible to human eye, such as ultraviolet and infrared light.

Color in Hubble images is used to highlight interesting features of the celestial object. Combinations of red, green and blue are added to the original black and white images. When mixed together, these three colors can simulate almost any color of light that is visible to human eyes. That's how televisions, computer monitors and video cameras recreate colors.

The colors in Hubble images, assigned for various reasons, aren't always what we'd see if we were able to visit the imaged objects in a spacecraft. We often use color as a tool, either to enhance an object's detail or to visualize what ordinarily could never be seen by the human eye.

Want to know what you're seeing in the night sky? Visit our website at [www.urbanecologycenter.org](http://www.urbanecologycenter.org) to find a calendar of star gazing events.

## PLANNING YOUR SUMMER FUN? DON'T FORGET...



**CANOEING THE RIVER**



**PLAYING ON THE SPIDERWEB**



**HIKING THE TRAILS**



**CLIMBING THE TOWER WALL**

photo by Barb Miner

## THANK YOU FROM THE CENTER

The Urban Ecology Center receives a majority of its support from local foundations, corporations and individuals. This page of our newsletter is reserved each issue to thank you and the many supporters of the Center. **The names listed are those that made a contribution to the Urban Ecology Center in the two months since our last newsletter.**

We thank those of you who have begun a new membership, renewed your membership or given a gift membership. Since our membership has grown to 2200 households we no longer can list all of our new and renewing members here. When space is available we will print the list of in kind donations. Rest assured we appreciate every donation and membership and are working hard to make your investment in the Center produce results 7 days a week, 357 days of the year! Call Ginger at the Center if your name has not appeared as you expected.

## COMMUNITY PARTNERS

Beans & Barley  
beansandbarley.com  
Clark Graphics  
clark-graphics.com/  
The Jansen Group  
jansengroup.com  
Harry W Schwartz  
Bookshops  
schwartzbooks.com  
Lake Park Lutheran Church  
lakeparklutheran.com  
Murray Hill  
Neighborhood Association  
Outpost Natural Foods  
outpostnaturalfoods.coop  
Plymouth Church  
plymouth-church.org  
REI  
rei.com  
St. Mark's Episcopal Church  
stmarksmilwaukee.org  
Sierra Club Building  
Environmental  
Community Program  
wisconsin.sierraclub.org/  
gwg  
Trek Bicycle Corp.  
trekbikes.com  
Water Tower Landmark  
Trust, Inc.  
We Energies  
we-energies.com  
Whole Foods Market  
wholefoodsmarket.com/  
Wheel & Sprocket  
wheelandsprocket.com

## FOUNDATIONS / CORPORATIONS

Alterra Coffee Roasters  
Greater Milwaukee  
Foundation – Trinity  
Foundation Fund  
Godfrey & Kahn  
Leaf Ltd.  
McKey Perforating Co.  
Omenhene Cocoa Bean  
Company  
Starbucks Coffee Company

## GIFTS IN HONOR OF...

Dana Kaleta  
- Arlene Clowers  
Brett Kemnitz &  
Lorraine Jacobs  
- Janine Arseneau  
The marriage of Laura Vargo  
and Kris Roberts  
- Barbara & Leon Todd

## GIFTS IN MEMORY OF...

Dick Burke  
- Doug Amerson  
- Lester Biniger  
- Peter & Katharine Copps  
- Dana P. Corbett  
- Laura Cornell  
- Kenneth & Dianne  
Dietz-Artmann  
- Bruce & Gail Harms  
- Chris Kegel  
- Keith Laughlin  
- Jane Moore  
- W.T. & J.E. Moorman  
- Brian A. Nygren  
- Dawn F. Pafford  
- Joseph & Donna Siefkes  
- Mike Sinyard  
- Joseph E. Tierney III  
Richard Stemberger  
- Kenneth & Sharon  
Sedmak  
- Beth Hilderbrand  
Lucy Morgan  
- Jack & Margaret Bartness  
- DJ & Meg Lee

## CLANCY PARTY

Mary Allegre & David  
McMullen  
Alterra Coffee Roasters  
Debra Anguil & Jamie A.  
Andriacchi  
Melanie Ariens & Joel  
Peregrine  
Margaret A. & Andrew P.  
Baniuikiewicz  
Stephen R. & Pamela S.  
Bednarczyk  
The Bengana Family  
Jeffrey Berry  
Patrick Bivins  
Breadsmith  
Sandy Bruss  
Cafe 1505  
Liam & Susan Callanan  
John & Mary Chandler  
George & Rikki Clark  
Andrew & Ellen Cook  
Jim & Katrina Cox  
John DePoy & Marian J.  
Singer  
Trevor D'Souza & Maureen  
Devine D'Souza  
Julie Dunn  
Timothy & Margie Edwards  
Mike Eitel &  
Bela Roongta Eitel  
Stacey Fleming  
Tom & Ann Gaeta  
Patricia Geiger  
Karen Geiger  
Shel & Danni Gendelman

Tim Gerend & Sandy Hellman  
Robert & Liz Graumann  
Jeanie & Paul Grunau  
Susan Han Paul &  
William Paul  
Dave & Shelly Heller  
Peter & Amy Hellmann  
Hotel Metro  
Bruce Hutson  
Lorraine Jacobs  
Amy Joyce  
Kevin P. & Andrea C. Kenealey  
Jane Kim  
David & Karen Kornreich  
David & Laura Koziol  
Larry's Market  
Diana DelRosso  
Geraldyn Flick  
John Florsheim  
Virginia Franke  
Tom & Amy Fritz  
David & Margaret Harvey  
Jill & Mal Hepburn  
Scott Humber  
Paul Hunter & Sophie Kramer  
Pat Jorin  
Carol Justin & Ed Szopinski  
Maureen Kane  
Karen Katz & Niles Roberts  
Demaris & Gontran Kenwood  
Deborah Kern  
Judy Knight & Al Rank  
James Konezchs  
Jerry & Kathy Krause  
Lindsay Krchma  
Harvey Kurtz &  
Yvonne Larne  
Mary Jo Layden  
Jean McKey  
Walter & Mary Ann Neevel  
Kathleen Okus  
Jennifer Perdue &  
Greg Mitchell  
Janine Polk  
Darlene Roberts  
Suzanne & Adolph Rosenblatt  
Ann Ross MacIver  
Steven Schmitt  
Steve Schuknecht  
Marian Singer  
Carol Skornicka  
Ken & Deborah Solis  
Judy R. Stansbury  
Kelly & Bill Wesolowski

## DONORS

Louis & Mary Agnew  
Heather Albinger  
Jamie Andriacchi  
Sofia & Abe Askenazi

Paul & Rosemarie Barrette  
Katie Bivens  
Edward & Amy Blumenthal  
Karin Buckholdt  
Mary Bykowski  
Gerry Campbell  
Tim, Amy & Rob Cary  
Jean Cline  
Martha Davis Kipcak & Family  
Lois Ellen Debbink  
Rachel Dickman  
David & Roberta Drews &  
Family  
Laurence J. Dupuis  
Sally Edgett  
David Felland &  
Diana DelRosso  
Geraldyn Flick  
John Florsheim  
Virginia Franke  
Tom & Amy Fritz  
David & Margaret Harvey  
Jill & Mal Hepburn  
Scott Humber  
Paul Hunter & Sophie Kramer  
Pat Jorin  
Carol Justin & Ed Szopinski  
Maureen Kane  
Karen Katz & Niles Roberts  
Demaris & Gontran Kenwood  
Deborah Kern  
Judy Knight & Al Rank  
James Konezchs  
Jerry & Kathy Krause  
Lindsay Krchma  
Harvey Kurtz &  
Yvonne Larne  
Mary Jo Layden  
Jean McKey  
Walter & Mary Ann Neevel  
Kathleen Okus  
Jennifer Perdue &  
Greg Mitchell  
Janine Polk  
Darlene Roberts  
Suzanne & Adolph Rosenblatt  
Ann Ross MacIver  
Steven Schmitt  
Steve Schuknecht  
Marian Singer  
Carol Skornicka  
Ken & Deborah Solis  
Judy R. Stansbury  
Kelly & Bill Wesolowski

Corey Zetts & Benji Timm  
Jaime Zillmer

## INKIND DONORS

Alterra Coffee Roasters  
Jeff & Melody Anderson  
Julia Atterberry  
Donald Austin  
Vivian Corres  
Ray Dahm  
Fintan Dooley  
Lyn Falk  
Karen Geiger  
Growing Systems/  
Dana Cable  
Mark Hawi  
Mary Ann Ihm  
Bettie Harriman  
Jennifer Kahn-Pettigrew  
Mary Kelly  
Jennifer Kessenich  
Julia Kirchner  
Barbara Klausmeier  
Tina Kurth  
Peter McMullen  
Milwaukee Public Museum  
Botany Dept.  
Dan & Cathy Mossman  
Lisa Noble  
Omanhene Cocoa  
Bean Company  
Joel Ottenstein  
Erv Russell  
Judy Saichek  
Karen Siegel  
Senior Resource Center  
SHARE Mitten Plus Club  
Robin Squier  
Mary Lou Stebbins  
Mary Stetson  
Jody Steren  
West Allis Women's Club  
Maria Zanoni

## WASHINGTON PARK INKIND DONORS

Clark Consulting,  
Lynn Allen  
Mario Costantini/  
La Lune Collection  
Keith & Ann Hacker



Thank  
You

# JOIN OUR COMMUNITY TODAY!

## MEMBERSHIP

### Renew or begin your membership, choose one:

- Individual (\$25) includes guest    Family (\$35)    Student (\$12)

Financial assistance is available. Please call Ginger Duiven, Development Manager at x106 or [gduiven@urbanecologycenter.org](mailto:gduiven@urbanecologycenter.org) for details.

### Give a gift membership:

- Individual (\$25) includes guest    Family (\$35)    Student (\$12)

Recipient Name \_\_\_\_\_

Address \_\_\_\_\_

City, State, Zip \_\_\_\_\_

Day Phone \_\_\_\_\_ Eve. \_\_\_\_\_

Email \_\_\_\_\_

Send the announcement card to

- Me    Gift recipient    Card picked up

Occasion \_\_\_\_\_ Deliver by \_\_\_\_\_

## DONATION (IN ADDITION TO MEMBERSHIP)

Please accept my gift to support:

- A community program (\$50)
- One half day for a school class (\$125)
- One full day for a school class (\$250)
- A Citizen Science project (\$500)
- Improved Riverside Park trails (\$1,000)
- A school for one year (\$5,000)
- Other \$ \_\_\_\_\_

Total Enclosed \_\_\_\_\_

Name \_\_\_\_\_

Address \_\_\_\_\_

City \_\_\_\_\_

State/Zip \_\_\_\_\_

Phone \_\_\_\_\_

Email \_\_\_\_\_

My neighborhood park is

- Riverside    Washington    I love them all!

- I would like to volunteer. Please contact me.

Charge my membership to:    Master Card    Visa

Card Number \_\_\_\_\_ - \_\_\_\_\_ - \_\_\_\_\_ - \_\_\_\_\_

Expiration Date \_\_\_\_/\_\_\_\_/\_\_\_\_

Signature \_\_\_\_\_ Date \_\_\_\_\_

Please make your check payable to:

**Urban Ecology Center** and return it with this form to:

Riverside Park, 1500 E. Park Place  
Milwaukee, Wisconsin 53211  
[www.UrbanEcologyCenter.org](http://www.UrbanEcologyCenter.org)



SEE PAGE 3 FOR DETAILS.

## EVERY KID BELONGS IN SUMMER CAMP, YOU CAN HELP!



Riverside Park  
1500 E. Park Place  
Milwaukee, WI 53211



Non-Profit Org.  
U.S. Postage  
PAID  
Milwaukee, WI.  
Permit  
No. 5190

# URBAN ECOLOGY CENTER PROGRAMS

MAY 2008

Contact the Center for details (414) 964-8505 or visit [www.UrbanEcologyCenter.org](http://www.UrbanEcologyCenter.org). Hours: Monday - Thursday 9a-7p, Friday - Saturday 9a-5p, Sunday 12 noon-5p

SUNDAY	MONDAY	TUESDAY	WEDNESDAY	THURSDAY	FRIDAY	SATURDAY
				8a Birdwalk 6:30p Photography Club		2 Science Saturdays (every Saturday 9:30a-4:30p) topic: Amphibians 7:45a Washington Park Nest Quest Workshop 9a Burdock Brigade 10:30a Volunteer Orientation 1p Animal Feeding Time
4 Science Sundays (every Sunday, 12:30-4:30p) topic: Amphibians	5 Library of Sustainability Open Hours	6 Early Bird Banding Burdock Brigade 5:30p Rock Climbing Volunteer Training	7 9a Building Tour with Ken 10a Walk with Ken 5:30p Beth's Building Tour Snake Surveys	8 8a Big Bird Day in Milwaukee County 7p Urban Echo Poets Urban Stargazers	9 9a Saturday Stewards 1p Animal Feeding Time	10 9a Saturday Stewards 1p Animal Feeding Time
11-2p Library of Sustainability Open Hours <b>Art Show Opening:</b> The Tools Three Artists Use to Express Their Vision 2p Knitting Circle	12 <b>Bike to Work Week Bicyclist Breakfast 7-9a</b> Library of Sustainability Open Hours Eco-Homes Series: Safe Sleeping	13 Early Bird Banding <b>Bike to Work Week Bicyclist Breakfast 7-9a</b> Burdock Brigade 4-6p Open Climbs 7p Out of Sight But On Our Minds: Milwaukee County Zoo Acting Locally and Globally	14 <b>Bike to Work Week Bicyclist Breakfast 7-9a</b> 9a Building Tour with Ken 10a Walk with Ken 5:30p Community Ambassador Training 5:30p Beth's Building Tour 6p Water Safety Course for Canoe Lending Program 6p Friends of Real Food	15 <b>Bike to Work Week Bicyclist Breakfast 7-9a</b> 8a Birdwalk Vegetarian Potluck	16 <b>Bike to Work Week Bicyclist Breakfast 7-9a</b>	17 5a International Migratory Bird Day Banding* <b>Bike to Work Week Bicyclist Breakfast Celebration 9a</b> 9a Chicago's Green Festival 9a Burdock Brigade 10a Storytime in the Park 10:30a Animal Care 1p Animal Feeding Time 3p Teen Hike
18 Library of Sustainability Open Hours Family Series: A World of Climbing	19 Library of Sustainability Open Hours	20 Early Bird Banding Burdock Brigade 4-6p Open Climbs 6p Paths to a Sustainable Future	21 9a Building Tour with Ken 10a Walk with Ken 5:30p Beth's Building Tour Snake Surveys	22 8a Birdwalk 6p Savor the Taste of Summer 6:30p Volunteer Orientation 7p Brazil: Vicariously	23 9a Saturday Stewards 10a Urban Ecology Center Book Club: Blessed Unrest by Paul Hawken 1p Animal Feeding Time	24 9a Saturday Stewards 10a Urban Ecology Center Book Club: Blessed Unrest by Paul Hawken 1p Animal Feeding Time
25 Library of Sustainability Open Hours Nature Detectives	26 Library of Sustainability Open Hours	27 9a Burdock Brigade 4-6p Open Climbs 6:30p Riverside Neighborhood Association meeting 7p Murray Hill Neighborhood Association meeting 8p Frog & Food Survey	28 9a Building Tour with Ken 10a Walk with Ken 5:30p Beth's Building Tour Water Safety Course for Canoe Lending Program	29 8a Birdwalk 6:30p Bird Workshops: Bird Song Part I	30 8a Birdwalk 9a Saturday Stewards	31 8a Birding by Canoe 9a Saturday Stewards 1p Animal Feeding Time

# URBAN ECOLOGY CENTER PROGRAMS

# JUNE 2008

Contact the Center for details (414) 964-8505 or visit [www.UrbanEcologyCenter.org](http://www.UrbanEcologyCenter.org) Hours: Monday - Thursday 9a-7p, Friday - Saturday 9a-5p, Sunday 12 noon-5p

SUNDAY	MONDAY	TUESDAY	WEDNESDAY	THURSDAY	FRIDAY	SATURDAY
1 Science Sundays (every Sunday, 12:30-4:30p) topic: Butterflies Library of Sustainability Open Hours	2 Library of Sustainability Open Hours	3 Burdock Brigade Open Climbs <b>An Evening with Marilyn Clemens 6p</b>	4 9a Building Tour with Ken 10a Walk with Ken 5:30p Beth's Building Tour 6p Snake Surveys	5 8a Birdwalk 6:30p Photography Club	6	7 Science Saturdays (every Saturday, 9:30a-4:30p) topic: Butterflies Burdock Brigade <b>Teen Adventure Challenge 8:30a</b>
8 12-2p Library of Sustainability Open Hours Knitting Circle 3p	9 4-7p Library of Sustainability Open Hours Eco-Homes Series: Natural Lawns 6:30p	10 9a Burdock Brigade 7p The Badger #2 Fish-stocking Car	11 9a Building Tour with Ken 10a Walk with Ken 5:30p River Rhythms Canoe Trip Beth's Building Tour 6p Friends of Real Food	12 8a Birdwalk 6p Water Safety Course for Canoe Lending Program Urban Echo Poets 7p Urban Star gazers 7p 6:30p University Neighborhood Association meeting	13	14 9a Saturday Stewards 10a Water Safety Course for Canoe Lending Program 10:30a Volunteer Orientation 1p Animal Feeding Time
15 12-2p Library of Sustainability Open Hours Family Series: Finding Your Way Open Climbs 2p 3-5p	16 4-7p Library of Sustainability Open Hours	17 9a Burdock Brigade 6p Paths to a Sustainable Future	18 9a Building Tour with Ken 10a Walk with Ken 5:30p River Rhythms Canoe Trip Beth's Building Tour	19 8a Birdwalk 6p Water Safety Course for Canoe Lending Program Savor the Taste of Summer Vegetarian Potluck 6:30p	20 10:30a Volunteer Orientation	21 9a Burdock Brigade 10a Water Safety Course for Canoe Lending Program 10a Storytime in the Park <b>UCC closes at noon Summer Solstice Celebration on the Hill 6:30p</b>
22 12-2p Library of Sustainability Open Hours Wonderful Water Open Climbs 2p 3-5p	23 4-7p Library of Sustainability Open Hours	24 9a Burdock Brigade 6:30p Riverside Neighborhood Association meeting Murray Hill Neighborhood Association meeting 7p	25 9a Building Tour with Ken 10a Walk with Ken 5:30p River Rhythms Canoe Trip Beth's Building Tour	26 8a Birdwalk 6p Water Safety Course for Canoe Lending Program 6:30p Volunteer Orientation 7p Bird Workshops: Bird Song Part 2	27	28 9a Saturday Stewards 10a Water Safety Course for Canoe Lending Program 10a Urban Ecology Center Book Club: Three Cups of Tea by G. Mortenson & D.O. Rellin 1p Animal Feeding Time
29 12-2p Library of Sustainability Open Hours Nature Detectives 2p 3-5p	30 4-7p Library of Sustainability Open Hours					