

"IT'S HARD TO FIND ANOTHER WATERSHED LIKE MINE" AND OTHER REASONS TO SUPPORT THE URBAN ECOLOGY CENTER

by Ginger Duiven, Development Manager

"I am very thankful for my trip to the Urban Ecology Center. I had so much fun learning about watersheds." "P.S. Great sledding hill!" - Kiandra

"I just wanted to thank you for helping us to see the features of the topography map." "I have a poem for you ladies: The things that keeps me up when I feeling down I don't know about u but I can ride around But I've looked and I've searched and it's hard to find another watershed like mine, a watershed like mine." - Briana

"I wanted to thank you all for letting us come to the Urban Ecology Center. We all had a wonderful time. We all learned a lot of things about water. I love to learn about water and everything else too. I really had a good time when we all went out to go sledding down the big hill. But at first I didn't sled. Then when I saw everybody else sledding and having fun and laughing I wanted to do it to. So I got a sled and went down the hill. It was my very first time sledding and I loved it." - DeShunna

These excerpts from student letters after a visit to the Center last winter illustrate the impact our education program had on 6th grade students. I hope this glimpse will inspire you to support our Annual Fund Campaign this year. The Annual Fund Campaign provides the essential operating support the Center needs to keep doing this important work.

These letters show what your support accomplishes with our Riverside and Washington Park partnering schools. It's a special day when students like DeShunna overcome their fears and have a great time. Because of your support, a student's visit to the Center is like science class, phys-ed class and outdoor fun with friends all rolled into one enriching experience.

There are a number of ways to make a year-end charitable gift to the Center. These contributions can be beneficial to you personally, too!

- Share your support by giving gift memberships to friends and family. Use the form on the back page of this newsletter or the membership form on our website. When you give multiple gifts, the first membership is regular price

Continued on page 5

CONFESSIONS OF A BUS SNOB

by Beth Fetterley, Director of Education

As a child, I loved taking the bus. I remember watching my fellow riders and anxiously awaiting my stop – nervous that I might miss it. Somehow in my adulthood the sense of adventure I felt as a child was replaced by reluctance. What was I wary of? Smelly, weird people? Crowded personal space? Off-schedule, dirty buses? Yes... I was resisting all of these possibilities.

Last winter was my first winter in my new home. While very happy with my decision to move, my location changed just enough to knock cross-county skiing off my list of realistic winter commute options. Snow tires for my bicycle function fairly well, but slushy, icy roads in winter made bicycling tricky when street riding was required. There was no way to ignore the obvious: a bus route that could hardly be more convenient stops a block from my house and just two blocks from the Center.

As convenient as this option was for an energy-conservation-minded commuter, I still resisted the thought of taking the bus through downtown to get to and from work. Prepared to hold

Continued on page 10

SMASH? CRASH? TWINKLE? IT'S HARD TO WRITE THE SOUND OF BREAKING GLASS

by Ken Leinbach, Executive Director

Imagine the sound of breaking glass here A man rollerblading nearby heard the sound and yelled "Hey, what are you doing there!" The culprit bolted. Our rollerblading neighbor then called the police.

Almost simultaneous to this, the phone rang in my home far from the scene of the crime. "This is Central One Security. An alarm is going off at the Urban Ecology Center indicating a broken window. Shall I send a guard?"

When we built the Center we invested significant money anticipating the need for this phone call. No money, however, was spent on the neighbor rollerblading nearby. But it is the latter that is the real reason we are here in Riverside Park and, in this case, proved to be the more effective crime deterrent. Thanks to this man's presence, the criminal fled before anything was taken and the police were on the scene within minutes. The existence of an active community center has greatly reduced crime in the park. At any given moment odds are high that someone

Continued on page 3



URBAN ECOLOGY CENTER

River Reflections is created and distributed through a team effort by the following people: Carijean Buhk, Ginger Duiven, Judy Krause, Pat Mueller, Shirley Spelt and a volunteer mailing crew.

Contributing writers: Erick Anderson, Anneke, Tory Bahe, John Clancy, Daniela, Ginger Duiven, Jamie Ferschinger, Beth Fetterley, Olivia Holbrook, Calvin Huffer, Ken Leinbach, Jim Lewis, Julia, Art Paque, Angelika Speckhard and Susan Winans.

River Reflections is a publication of the **Urban Ecology Center**. The **Urban Ecology Center** is a 501(c)3 tax exempt nonprofit organization. Its facility and programming are made possible through the generous annual contributions of 82 foundations and corporations, over 2100 member and donor families and many in-kind donors. **No tax dollars are used to operate the Urban Ecology Center.**

To make a contribution, please see page 12 for the easy to use form or call Ginger Duiven at x106.

The **Urban Ecology Center** educates and inspires people to understand and value nature as motivation for positive change, neighborhood by neighborhood.

Our environmental community centers:

- Provide outdoor science education for urban youth.
- Protect and use public natural areas, making them safe, accessible and vibrant.
- Preserve and enhance these natural areas and their surrounding waters.
- Promote community by offering resources that support learning, recreation, stewardship and camaraderie.

Urban Ecology Center

Riverside Park, 1500 E. Park Place
Milwaukee, Wisconsin 53211
(414) 964-8505
Fax: (414) 964-1084
uec@urbanecologycenter.org

Hours of operation:
Monday - Thursday: 9 a.m. - 7 p.m.
Friday & Saturday: 9 a.m. - 5 p.m.
Sunday: 12 noon - 5 p.m.

Washington Park, 1859 N. 40th Street
Milwaukee, Wisconsin 53208
(414) 344-5460
Fax: (414) 344-5462
jzocher@urbanecologycenter.org

www.UrbanEcologyCenter.org

DROPLETS

Urban Ecology Center bird banding volunteers win awards! Our bird-monitoring partnership in Riverside Park, the Milwaukee County Avian Migration Monitoring Partnership, has won the Citizen-based Monitoring Project of the Year from the Wisconsin DNR. Congratulations to the over 100 volunteers who have made this project a huge success. Also, **special congratulations to Lynn Ratkowski**, who was named Citizen-based Monitoring Project Volunteer of the Year. Lynn is an invaluable asset to our project.

Fallen oak fate. Many thanks to everyone who responded to the article in the last newsletter regarding the fallen oak tree. The tree fell in a prairie, a rare ecosystem that we are cultivating. With the tree in such an important spot, we had to decide if it posed a threat to the prairie's health and development and should be removed or, as an ecosystem in itself, should be used for educational purposes. Once the leaves have decomposed the raw skeleton of the trunk and branches will not actually cover that much area within the prairie. As a result, the disturbance to the prairie's development should be negligible. On the other hand, the tree shows decomposition in action as insects and bugs eat their way through it. As it hollows out, all sorts of small mammals will call it home. After some serious thought, we have decided to not move the tree. Special thanks to Bill Rumpf and Kim Forbeck for their help in presenting this issue.

New High School Outdoor Leader interns chosen. After the summer portion of our High School Outdoor Leader Program ends, the participants can apply for a year-long internship at the Center. We are proud to announce that this year's interns are Kelsey Brooks, Roger Coleman, Shawn Office and Rachel Soika.

Congratulations to Clete Long for completing his Eagle Scout service project at the Center this fall. Clete installed railings and water bars along a steep section of trail on the north

WISH LIST

If you have a donation for the Center, please call Judy Krause, x102.

- Animal heat rocks and heat pads
- Apple cider press
- Basking light bulbs and infrared light bulbs
- Claw hammers
- Compact, energy-efficient freezer
- Crayons and markers
- Electric golf cart
- Garden hoe
- Gently used sweatpants
- Ice cream buckets with lids
- Kayaks
- Old towels for rags, any size
- Portable shade canopy
- Rain ponchos/jackets for little kids (kindergarten - 3rd grade)
- Sleds
- Small, foaming pump dispensers
- Step stools - one, two, three steps
- Sturdy 2-drawer file cabinets
- Triple-Beam balance scales

For Washington Park

If you have a donation for Washington Park, please call Joey Zocher, (414) 344-5460.

- Bird feeders
- Clipboards
- Coffee table
- Crayons and markers
- Energy Star dehumidifier
- Field guides (esp. trees, birds, insects, flowers)
- Film canisters
- Fishing nets and poles
- Flat bedsheets
- GPS device
- Kites
- Lined paper/notebooks
- Love seat
- Microscopes
- Musical instruments (acoustic - drums, guitars, mandolin, ukulele)
- Pens/pencils
- Plastic storage bins with lids
- Puppets
- Sleds
- Snowshoes
- Stopwatches
- Table top popcorn popper

side of the Riverside Park Natural Area which leads under the Locust Street bridge. Thank you, Clete, for your hard work and leadership.

Angling a success! The Center taught 440 young anglers (30 came several times) about the urban waterways and gave them a unique fishing experience. Thanks to Fishing Coach Toby Silverman and the Wisconsin DNR.

VOLUNTEER CORNER

by Susan Winans, Volunteer Coordinator Unless otherwise noted, please contact Susan at x110 or swinans@urbanecologycenter.org to sign up for the following opportunities

Volunteer Appreciation Dinner and Annual Meeting! Join us to celebrate the successes of the Center and its volunteers on November 14th from 5:30 - 8 p.m. Space is limited! Please RSVP by November 5th by calling (414) 964-8505.

Wrap holiday gifts at Schwartz Bookshop on Downer. Tips you earn will go to support the UEC. Several evening and weekend shifts in December. Contact Nikiya, x104.

Light up Riverside Park! Be a part of our annual Candlelight Walk on December 15th. We need you to light luminaries in the park, guide participants through the illuminated forest, greet visitors, maintain the fire at the Center and clean up at the end of the event. Contact Jamie, x114.

Snow shovelers needed at daybreak to help make the building accessible to our visitors. If you are able to lend a hand at 7 or 8 a.m. on snowy mornings, contact Kimberly, x150.

Join the newsletter crew! You are reading this newsletter thanks to a group of volunteers who fold, label

and tab each one before they are mailed. If you would be able to give 2-3 hours of your time on a weekday to help, contact Judy, x102.

Drive our vans or buses. Help us provide transportation for visiting classes. Volunteers must be available at least one weekday morning or afternoon Tuesday - Friday, be 21 years of age and have a clean driving record within the last two years. To schedule a training, please contact Sarah Rohe, x125.

Morning Kitchen Helpers. Prepare snacks for our visiting students, wash mugs and help keep our kitchen organized. Volunteers needed for two hour shifts beginning at 8:30 am. Contact Kimberly, x150.

Handyperson needed for repair work. Also licensed electricians needed for occasional fixture and outlet work. Contact Kimberly, x150.

Washington Park Center Sitters. We could really use some extra ears and eyes to join us at our new center after school, 3 - 5 p.m., when kids are hanging loose. If you live near by or have some extra afternoon time call Joey at (414) 344-5460.

SMASH? CRASH? TWINKLE?

continued from page 1

will be around, eyes and ears alert to suspicious behavior.

Crime reduction, while not a visible part of our Center, is quite strategic and intentional. I remember my early days in this organization. More than once we felt threatened. We cleaned graffiti almost daily and I still have pieces of the plaster wall which contains bullet holes from night time activity in the park. It is no accident that we established community gardens along the isolated stretch of the Oak Leaf Trail. It is also no accident that we conduct daily programming on the once secluded Milwaukee River. Nor is it an accident that the Center initiated the effort to legalize early morning and evening dog walking in Riverside Park. Strategic and consistent activity in the park keeps the park safe. Today criminal acts are rare and attempts are thwarted.

Improving park safety was also a big part of the reason we were invited to start a satellite in Washington Park. Washington Park is in a pretty rough neighborhood, but one with incredible potential. Already, having been open only a month, we have witnessed signs of increased use and have inspired activities not seen in the park for many years. There is a palpable buzz when people hear about boating on the lagoon, anticipate skating in the winter and learn from bird watchers the surprising diversity of wildlife in the park. A transformation is beginning to unfold, but it takes time and our staff have already experienced some scary moments.

With this in mind, we could really use some extra ears and eyes to join us at our new center, especially after school between three and five when kids are hanging loose. At the trailer we used to have volunteer Center Sitters to help out in the afternoons and provide an additional safety presence. Well, guess what? We need this again. If you live near by, or have some extra afternoon time to give, please call Joey, Washington Park manager at (414) 344-5460.

Part of our mission reads: Protect and use public natural areas, making them safe, accessible and vibrant. Please consider helping us fulfill this mission with your presence.

MAKING MEMORIES IN WASHINGTON PARK

by Tory Bahe, Environmental Educator

The Washington Park satellite's first school year is off to a fabulous start! Kids from neighborhood schools are exploring and learning in the park and our building seems like a new space every week as new equipment, from field guides to canoes, arrives and demands a home. Every day visitors come to check on our progress or curiously ask what we do while in search of a drinking fountain or a restroom. They have questions for us, but they also have their own Washington Park stories to tell, tales of ice skating races, Silver Skates and neighbors gliding under bridges and around the islands of the lagoon.

The UEC at Washington Park is becoming a place for students and

others in the community to create new memories. Each class is a separate opportunity to make an impression on students, teachers and parent chaperones. There have been several big exciting events like canoe trips on the lagoon and almost daily great blue heron sightings, but seemingly smaller moments are just as likely to make an impression on students. A favorite memory for one class was using hand lens to examine the fluffy seeds of the "hotdog plants" they found on our hike and shaking the plants to see them fly. They went away from the park with hands-on knowledge of different types of seeds that they couldn't have learned sitting at their desk with a book. I'll never look at cattails the same way again.

"STRIVING" FOR A NEW STYLE OF HIGH SCHOOL SCIENCE

by Erick Anderson, Environmental Educator

Have you ever found yourself admiring an old tree? Perhaps you've tried to guess how high its tallest branches reached. On the west end of the Habitat Playground is a well-aged hackberry tree that students from the Strive Media Institute came to know very well. They measured its height, estimated its volume and learned how to identify it by its bark and leaf shape. How's that for the first day of science class?

For years, Strive Media Institute has provided city youth with a media-based after school program, teaching them the arts of print and television journalism. Its students produce Gumbo Teen Magazine and Gumbo TV. This year, they've expanded to include a high school with a media emphasis and hands-on approach to learning. The Center was a perfect choice for its science program.

Every Wednesday morning, Strive students come to the Center for a very fun half-day of science class. Dan Graves and I have the exciting challenge of presenting an entire year of physical science with an outdoor emphasis. Our goal is to reinforce every concept we present with interactive lessons. Bill Webber, Strive's math

teacher, has worked very closely with us in planning the curriculum. A retired science teacher from Rufus King High School, Bill has many years of experience teaching hands-on science to urban youth.

Our students are making great progress. They're learning how to use laboratory equipment such as triple-beam balances and graduated cylinders. They're brushing up on their math skills through data collection and processing. And they're even diving into hot environmental issues as they prepare persuasive essays about alternative energy sources of their choice.

In our first week, we introduced the concepts of matter, mass and volume. Then we used our knowledge to measure the height of the aforementioned hackberry tree. For this task, each student used some cardboard, a piece of string, a protractor and a washer to build a clinometer, a common forestry instrument used to measure a tree's height. With a little math, we estimated the volume based on the height. We are thrilled to see what the rest of the year has in store for Strive Media!

CALL FOR ART EXHIBITS

by Judy Krause, Business Manager

The Center is looking for artists interested in showing their work in our Community Room gallery. Art must have nature-related subjects, a natural science theme, products of nature used as art or the relationship of the urban environment to nature theme. Selected pieces will be displayed over a three month period.

Sample entry deadline is Monday, November 26, 2007. To apply:

- Submit 5-10 images of art in slides, JPGs, power-point, or 5x7 prints.
- Identify each image by title, medium, size and year.
- Include the number of works you'd like to display, the ideal time frame and an artist's statement.

- Include your resume, exhibition record and any background material regarding your submission.

The exhibit space has approximately 90 lineal feet of wall display area. 3D work can be exhibited only by wall mount. Artists are responsible for hanging their artwork.

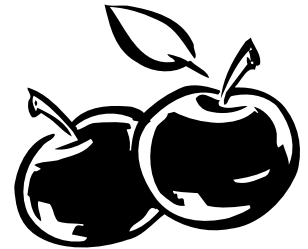
Work may be made available for purchase, with a 20% of sale price contribution to the Center.

Work may be submitted by mail to the Urban Ecology Center, 1500 E. Park Place, Milwaukee, WI, 53211, attn: Judy Krause, Business Manager; or by email to jkrause@urbanecologycenter.org.

CREATIONS BY YOUNG ARTISTS AND POETS

by Jamie Ferschinger,
Community Program Coordinator

One of the activities at the Fall Festival this year was a kid's art and poetry contest. The creations were delightful! My charge was to choose a winner. I tried, but I failed; I could not choose just one winner. So, here are the winners! Enjoy some of the poems written by the young poets who attended the festival. Thank you to all who created a masterpiece.



A leaf fall from a tree,
Down by you and me,
Its colors as beautiful as the tree
Uniting the tree with fall and me
By Julia

Paint
Color, mess
Move, draw, crack
Painting is my favorite
Creativity
By Daniela

Apple picking fun
Caramel sticking in the sun
Fall time is so fun
By Olivia Holbrook

Sun
Warm, bright
Colorful, sunny, sweaty
Hot, big, shining, ball
Yellow, orange, red
Cold, relaxing
Moon
By Anneke

Pumpkins glow yellow
Scary faces lighting up
What a spooky night
By Calvin Huffer

Fall On Earth
The Earth is turning
The animals are ready
Fall is near

The Animals
Trees are turning red
The squirrel has eaten nuts
Soon it is time for bed

FROM THE BOARD

by John Clancy, President, UEC Board of Directors

I am writing to invite all of you to our **Volunteer Appreciation Dinner and Annual Meeting on Wednesday, November 14th**. I would like to thank everyone who has provided invaluable service to the Center. We are fortunate to have such dedicated volunteers that help make the Center a truly wonderful place.

Among the volunteers to be recognized are the Center's Board of Directors. We will be thanking Lorraine Jacobs and Ben Calsbeek, who are finishing their terms on the board. Lorraine is a long-time member of the board and provided great leadership during her term as President. Ben, a high school teacher at Washington High School, has served on our Personnel Committee and assisted with the expansion to Washington Park.

In addition, we would like to recognize two new directors that we will ask our membership to approve. Mike Eitel is the owner of several Milwaukee hot spots, including Trocadero, the Nomad and Cafe Hollander. Frank Cumberbatch is the owner of Trinidad Group, LLC, a consulting and business development firm. Both Mike and Frank are already active board and committee members and key advisors.

We also will get to renew ten current directors. Jeff Anthony, Jennifer Bolger, Dick Burke, Monique Charlier, Danni Gendelman, Robert Graumann, Dennis Grzezinski, Troy Hilliard, Bill Rumpf and Kathy Werlein have graciously agreed to serve another three-year term.

We will vote to approve the expansion of the board. It is extremely important for us to have additional directors to help ensure that the Center continues to thrive. The board has voted to increase the maximum size from 21 to 30 individuals.

In addition to recognizing our board members and other volunteers, this event is important because we will be voting on our new mission statement. For years, our Center's mission statement has served us well:

The Urban Ecology Center's mission is to preserve, enhance, and use the natural resources of Riverside Park, the Milwaukee River, and the adjacent green spaces. Using this living laboratory, the Urban Ecology Center:

- provides environmental science programs to neighborhood schools.
- promotes environmental awareness in the community.

- preserves and enhances the natural resources of Riverside Park.
- protects the Milwaukee River.

Because of the significant growth of the Center we thought it was important to review our mission and make sure that it accurately represents and inspires the important work that we do. As a result, the board of directors has approved the following mission statement:

The Urban Ecology Center educates and inspires people to understand and value nature as motivation for positive change, neighborhood by neighborhood. Our Environmental and Community Centers:

- provide outdoor science education for urban youth.
- protect and use public natural areas, making them safe, accessible, and vibrant.
- preserve and enhance these areas and their surrounding waters.
- promote community by offering resources that support learning, recreation, stewardship, and camaraderie.

I hope to see you all November 14th.

"IT'S HARD TO FIND ANOTHER WATERSHED LIKE MINE"

continued from page 1

- and \$5 off the price of each additional membership.
- **Your gifts of cash are always appreciated** and put to use right away. Your gift may be deductible on your personal income taxes. Use the form on the back of this newsletter or watch your mailbox for our annual letter.
- **Gifts of stock may receive a double tax benefit:** you can deduct the full fair market value of appreciated stock – if owned for more than one year – and you can save again by avoiding all capital gains taxes on the "paper profit". For assistance in transferring stock please contact Judy, x102.
- If you are 70 1/2 or older you can take advantage of the **IRA Charitable Rollover**, before it expires at the end of the year. This legislation temporarily modifies required minimum distribution rules. How does it work? If you make "qualified charitable distributions" of \$100,000 or less from a Roth or traditional IRA, the distributions are excluded from gross income for 2007. No gross income means no taxes. This exclusion applies solely to taxpayers who are 70 1/2 by the date of the distribution. Only distributions from Roth and traditional IRAs qualify; distributions from other retirement plans are excluded.
- **A planned gift** – whether a bequest in your will, a beneficiary designation on your insurance policy or retirement plan, or the establishment of a charitable trust – will help the Center far into the future. To discuss planned giving options contact Judy, x102 or Ginger, x106.
- **Shop at Harry W. Schwartz Bookshops**, join their "Schwartz Gives Back" program and choose the Center as your organization.

The Center needs your support. During this season of giving we hope you will give generously. With your contribution we can keep kids learning, laughing and loving the outdoors.

NOVEMBER - DECEMBER CALENDAR OF PROGRAMS

Unless otherwise indicated, participants meet at the Urban Ecology Center, 1500 E. Park Place. Scholarships are available for all fee-based programs. For general information call (414) 964-8505 or visit www.UrbanEcologyCenter.org Programs marked with an * are not accessible for persons with physical disabilities. All others have limited accessibility. Call if you have accessibility concerns.

SPECIAL EVENTS

VOLUNTEER APPRECIATION DINNER AND ANNUAL MEETING

Wednesday, November 14

5:30 p.m.

For everyone

Free - donations appreciated

Space is limited! Registration required, call 964-8505.

Members are invited to attend the Center's annual meeting followed by the volunteer appreciation event.

Read "From the Board" on page 5 for details.

CANDLELIGHT WALK

Saturday, December 15

7 - 9 p.m.

Walks leave every 15 minutes starting at 7 p.m., music begins at 8 p.m.

For everyone

Free - donations appreciated

Call to register, 964-8505.

Celebrate the Winter Solstice! Explore Riverside Park by candlelight with a guided walk accompanied by poetry and readings of the season. After the walk return to the Center to warm yourself by the fire and for apple cider, snacks and music by Regina Gallero.



URBAN ADVENTURES

Advanced registration required for all Urban Adventures. Payment due at time of registration. Cancellation Policy: When payment is required in advance for a program, you may cancel up to 48 hours in advance without penalty. If the Center cancels a program for any reason, the payment will be refunded or can be used toward a future program. Call the Center at (414) 964-8505 to register at least two days before the trip. Trips run as scheduled, rain or shine.

OPEN CLIMBS ON THE TOWER WALL

Saturdays, November 3 - December 15

3 - 5 p.m.

Tuesdays, November 6 - 27

4 - 6 p.m.

For everyone

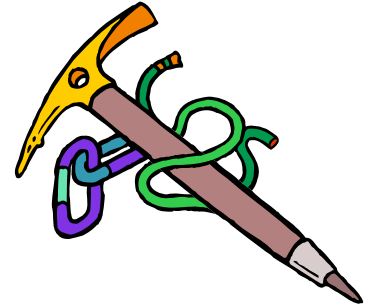
Adults: \$10 (Members - \$7)

Children: \$8 (Members - \$5)

Registration recommended, call

964-8505, walk-ins welcome.

Extend your skills on the Center's tower climbing wall. Harnesses and belayers provided. All climbers must have a completed and signed waiver before climbing, available at the Center's reception desk and at www.urbanecologycenter.org.



MILWAUKEE RIVER NIGHT HIKE

Wednesday, December 5

6:30 - 8:30 p.m.

For adults & accompanied children, ages 12+

Adults: \$8 (Members - \$5)

Children: \$5 (Members - \$3)

Call to register, 964-8505.

Explore the Milwaukee River by night under the light of the Cold Moon. We'll walk a 5 mile loop from the Center up to Capitol Drive and down to Caesar's Park. Dress warmly, wear sturdy shoes and bring a flashlight.

SPONTANEOUS SNOW OUTINGS

Snow-play enthusiasts - this is ideal for you! Sign up to join others interested in snowshoeing or skiing this winter. These spontaneous outings will be planned at short notice when the weather is right. Invitations will be sent by email. Email Chad at cthomack@urbanecologycenter.org to add your name to this list. Beginners welcome!

COSTA RICA ADULT TRAVEL OPPORTUNITY FOR 2008

Trip is scheduled for late February/early March

Call Dana at 961-1622 for more information

and to attend an informational slideshow

Join Dana Kaleta on this remarkable tour of Costa Rica's rich biodiversity. Our 12-day tour will take you through mid-elevation rainforest, volcano and cloud forest, migratory bird havens, coastal mangrove, national parks and pacific beaches. While there you'll support locally owned lodges and businesses.

HOLIDAY HOURS AT UEC

The Urban Ecology Center will be closed on November 22, 23, December 24, 25 and January 1. The Center will close at 5 p.m. during the winter break (December 26-27 and 31). Friday - Sunday hours remain the same. If you have any questions, call (414) 964-8505.

FAMILY PROGRAMS

ANIMAL FEEDING TIME

Saturdays
1 - 2 p.m.
For everyone
Free - donations appreciated

Do you know what a snake has for lunch? Help feed the Center's resident turtles and snakes as you learn about the animals that inhabit the river valley.

SCIENCE SATURDAYS AND SUNDAYS

Drop in program
Saturdays,
9:30 a.m. - 4:30 p.m.
Sundays, 12:30 - 4:30 p.m.
For adults and accompanied children
Free - donations appreciated

Discover the world of science through self-led interactive activities and crafts.

November: Learn about clouds.

December: Winter. Learn how nature transforms as the seasons change from fall to winter.

FAMILY FUN AND GAME DAY

Sunday, November 11
2:30 - 4 p.m.
For families with children, ages 5+
\$7 or \$24 for families of 4 or more (Members - \$4 or \$12 for families of 4 or more)
Registration required by November 7, 964-8505.

Join us for a fall hike and games that the whole family can play together!

FRIDAY FIRE

Friday, November 16
7 p.m.
For everyone
\$5 per person or \$10 per family (Members - Free, donations appreciated)
Call to register, 964-8505.

Larry Penn sings of railroads, hoboos, working people, and just about everything else. He has played at the Smithsonian and Milwaukee's Pabst Theater. Many have recorded his tunes, including Pete Seeger, Rosalie Sorrels, Claudia Schmidt, and locals Patty Stevenson & Craig Siemsen. Be prepared to sing along as audiences all over the US have joined Larry in his songs.

SANDHILL CRANES AT JASPER PULASKI

Saturday, November 17
9 a.m. - 9 p.m.
For adults & accompanied children, ages 12+
Adults: \$35 (Members - \$30)
Children: \$25 (Members - \$20)
Call to register, 964-8505.

Each fall tens of thousands of sandhill cranes congregate in the shallow marshes of the Jasper-Pulaski Wildlife Area in Indiana to reinforce pair bonds. Witness one of the Midwest's most amazing wildlife spectacles. Bring a bag lunch and we'll stop for dinner at a restaurant.

TIPI TALES

Saturday, November 17
2 - 3:30 p.m.
For everyone
\$7 per person or \$24 for families of 4 or more (Members - \$4 per person or \$12 for families of 4 or more)
Call to register, 964-8505.

Join us in the tipi! Sit around the fire, listen to Native American stories and make an art project.

CHEESY PACKER PARTY

Sunday, November 18
Noon
For everyone
Free - donations appreciated
Call to register, 964-8505.

Come watch the Packers/ Vikings game on the big screen. Bring your favorite cheese to pass. We will provide the crackers and bread.

NATURE DETECTIVES

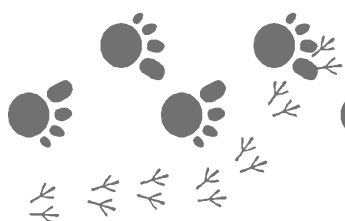
Sundays, November 25 & December 23
2 - 3:30 p.m.
For everyone
\$7 per person or \$24 for families of 4 or more (Members - \$4 per person or \$12 for families of 4 or more)
Call to register, 964-8505.

Discover the natural world as we explore Riverside Park using magnifying glasses and doing scavenger hunts.

ANIMAL TRACKING

Saturday, December 8
2:30 - 4 p.m.
For ages 7 and older
\$7 per person or \$24 for families of 4 or more (Members - \$4 per person or \$12 for families of 4 or more)
Call to register, 964-8505.

Winter is a great time to discover what signs animals leave behind! We will talk about animal signs, make molds of animal prints and attempt to track some animals in the park.



ART AT UEC

ELM CREATIVE ARTS SCHOOL

Exhibit open through
December
For everyone

Our final art show of 2007 highlights students from one of our partnering schools, Elm Creative Arts School. See how nature inspires these budding artists and be inspired by their creativity!

DIVERSE VOICES - GATHERING IN THE WILD: ART SHOW OPENING

Sunday, January 6
2 - 4 p.m.
For everyone
Free - donations welcome
Call to register, 964-8505.
Exhibit open through March

This art show is the work of four voices growing from the natural world - Debbie Jircik, Kirsten Christianson, Pat Hidson and Fran Cheney. They will work together to install a unique show that is a piece in itself - a collage of their images and written words.



From the Elm Creative Arts School exhibit currently in the Community Room.

VOLUNTEER OPPORTUNITIES

VOLUNTEER ORIENTATION

Saturdays, November 3 & December 1
10:30 a.m. - noon
Thursday, November 15
6:30 - 8 p.m.
For everyone
Free - donations appreciated
Call to register, 964-8505.

Learn about the Center's programs and how to get involved.

BURDOCK BRIGADE

Tuesdays (excluding December 25) & Saturdays, November 3, 17, December 1 & 15
9 - 10:30 a.m.
For adults and accompanied children
Free - donations appreciated

Have a direct impact on our natural world by helping increase the biodiversity within the outdoor classroom of Riverside Park. The Burdock Brigade engages in hands on restoration activities: removing exotic invasive plant species and planting native species in order to help increase the habitat of many of our native animals

SATURDAY STEWARDS

Saturday, November 10, 24, December 8, 22 & 29
9 - 10:30 a.m.
For adults and accompanied children
Free - donations appreciated
Call to register, 964-8505.

Kick off your weekend by volunteering at the Center! Enjoy small and large projects around the Center and in Riverside Park. Working together is a great way to connect with others in our community. Individuals and small groups, young and old, everyone is welcome. Please sign up so we know who is coming.

NATURALIST WALKS

Mondays, November 12, 26 & December 10
11 a.m. - noon
Free for volunteers, non-volunteers \$5
Call to register, 964-8505.

Explore Milwaukee's urban wilderness and get to know other volunteers and Urban Ecology Center educators on the 2nd and 4th Monday of each month throughout the school year. Build naturalist skills as educators share their experience and skills on these fun and informal walks.

ADULT LEARNING

ECO-HOMES: GREEN DESIGN - BUILD - REMODELING

ECO-FRIENDLY FLOOR OPTIONS FOR YOUR HOME

Speakers:
Andy Pace, Owner and
Founder of Safe Building
Solutions &
Lyn Falk, Founder and
President of Solterra Studios
and creator of the Center's
Library of Sustainability
Thursday, November 15
6:30 - 8 p.m.
For adults
\$20 (Members - \$15)
Call to register, 964-8505.

Bamboo, cork, and linoleum flooring are earning a reputation as eco-flooring options. But what else is considered "green"? Learn about the many eco-friendly and healthy floor options available on the market today. What makes one floor green and another healthy? How do they compare to their non-green counterparts? What about installation and maintenance? What questions do you need to ask before you buy? Come and find out!

LIBRARY OF SUSTAINABILITY OPEN HOURS

Sundays, Noon - 2 p.m.
Mondays, 4 - 6 p.m. (December 31, 4 - 5 p.m.)
For adults
Free - donations appreciated
Call to register, 964-8505.

Remodeling, adding on, or building a new home? Visit the Center's Library of Sustainability for ideas to beautify your home while honoring the environment. This is a hands-on library of sample products for home construction and interior decorating. Resource person available during scheduled open hours.



URBAN ECOLOGY CENTER TOURS

WEDNESDAY WALK WITH KEN

Wednesdays
9 a.m. - UEC Building
10 a.m. - Riverside Park
For adults and
accompanied children
Free - donations appreciated
Call ahead to confirm (414)
964-8505.

You're invited to a special tour as you explore Riverside Park and/or our green facility with Executive Director Ken Leinbach (staff substitution on occasion).

BETH'S BUILDING TOUR

Wednesdays, excluding
November 14 & December 26
5:30 - 6:30 p.m.
For adults and
accompanied children
Free - donations appreciated
Call to register, 964-8505.

Explore our green facility and learn about its secrets and stories with Director of Education Beth Fetterley. This is a great opportunity for you to learn about the Center's innovative educational programming (staff substitution on occasion).

ADULT BIRDING WORKSHOP:

FEATHERS PART I

Saturday, November 3

FEATHERS PART II

Saturday, December 1

4 - 5:30 p.m.

For adults
\$10 (Members - \$5, free for
regular birding volunteers)
Call to register, 964-8505.

What's the most salient bird characteristic - something all birds have that nothing else has? Feathers of course, which take a variety of forms and perform multiple functions. We will take an in-depth look at this amazing adaptation and then hike into Riverside Park at dusk to look for birds. Binoculars provided.



DOOR COUNTY BIRDING

Sunday, November 11
5:30 a.m. - 7:30 p.m.

For adults
Adults: \$35 (Members - \$30)
Call to register, 964-8505.

Travel with Tim Vargo and Bill Mueller to Door County to search for late fall migrant birds and end-of-autumn foliage. Witness the most scenic parts of the longest shoreline of any county in the U.S. Target birds include shrikes, winter finches, Snow Buntings, Lapland Longspurs and Tundra Swans.

THE USE OF FISH COMMUNITIES TO ASSESS ENVIRONMENTAL QUALITY IN THE MILWAUKEE RIVER BASIN

Speaker: Will Wawrzyn,
Fisheries Biologist, Wisconsin
Department of Natural
Resources
Tuesday, November 13
7 p.m.

For adults
\$5 (Members - free, donations
appreciated)
Call to register, 964-8505.

Will Wawrzyn will discuss the use of fish communities as one of a variety of "tools" for assessing environmental quality in the Milwaukee River Basin. Trends and more specific case studies which assess the impacts of land use and other physical perturbations (such as channelization and dams) will be provided, including the abandonment of the former North Avenue Dam in Milwaukee.

UEC BOOK CLUB

Saturdays, November 24 &
December 15
10 - 11 a.m.

For everyone
Free - donations appreciated
Call to register, 964-8505.

The UEC Book Club meets once a month to discuss an environmentally themed book. Newcomers and ongoing participants are invited to come enjoy the conversation and refreshments.

November: *The World Without Us* by
Alan Weisman.

December: *Hundred Dollar Holiday*
by Bill McKibben

NOTES FROM NEPAL

Wednesday, December 5
7 - 8 p.m.

For adults
\$5 (Members - free,
donations appreciated)
Call to register, 964-8505.

Discover the beauty of the Himalayas as Director of Education Beth Fetterley shares stories and images from her trip to Nepal.

WHAT CAN YOU LEARN FROM AN URBAN PARK?

Student Intern Research Project Presentation

Speakers: Local students who
have completed research
through the UEC
Tuesday, December 11
7 p.m.

For adults
\$5 (Members - free,
donations appreciated)
Call to register, 964-8505.

This program will highlight student research projects conducted in Riverside Park throughout the year. Each student will present a short summary of his/her work.

CHRISTMAS BIRD COUNT

Saturday, December 15
8 a.m. - 3 p.m.

For adults
\$5 donation to National
Audubon Society
Call to register, 964-8505.

Join thousands of volunteers from around the world for the annual Christmas Bird Count. Data we collect contributes to an international database that looks at bird population trends. We will hike north to Capitol Drive along the east bank of the Milwaukee River, stop for a quick brunch and return along the west bank to North Avenue and back. Please follow us to Lake Park in the afternoon for refreshments and more birding. Dress for a long hike appropriate to the weather and bring money for brunch.

INTEREST GROUPS

EARLY MORNING BIRDCALLS

Thursdays, excluding
November 22
8 a.m.

For adults and
accompanied children
Free - donations appreciated

Interested bird watchers of all ability
levels are invited to explore bird life
with us. Binoculars available.

UEC PHOTOGRAPHY CLUB

Thursdays, November 1 &
December 6
6:30 p.m.

For adults
Free - donations appreciated

Explore nature in an artistic light and
develop new skills.

SAVOR THE TASTE OF SUMMER: FAMILY FLAVORS

Tuesday, November 6
6 - 9 p.m.

For adults and
accompanied children, we can
only accommodate one child
with each parent
\$30 (UEC and CSA members
- \$25), cost covers both parent
and child
Call to register, 964-8505.

Just in time for the holidays, this
course will show how you can bring
the kids into the kitchen to learn and
have fun working with local foods
saved or preserved from the summer,
everything from baby food to fruit
leather. Come work with your child
in the kitchen.

KNITTING CIRCLE

Sundays, November 11 &
December 9
3 - 5 p.m.

For everyone
Free - donations appreciated

If you are new to knitting, or an
experienced knitter, join us for coffee,
good conversation and knitting.

FRIENDS OF REAL FOOD

Wednesdays, November 7 &
December 12
6 - 8 p.m.

For adults
Free - donations appreciated
Call to register, 964-8505.

Share a potluck dinner and join the
enthusiastic, informative discussion.

**November: Honor the Earth—
Native Americans Recovering
Traditional Foods.** First a short
video about the importance of wild
rice to the Objive People and
their campaign against genetically
engineered rice. Learn about efforts
of Native communities to recover
their traditional foods and agriculture
—improving the health of their
people, land and biodiversity.

December: Our Holiday Food

Stories. Let's share our stories
of family holiday food traditions
and talk about how to build new
traditions with real, healthful and
local tasty foods. Bring your favorite
recipes to share.

URBAN ECHO POETS

Thursdays, November 8 &
December 13
7 p.m.

For adults
Free - donations appreciated

Our purpose is to observe and
experience nature, then to express
these observations in poetry and
essay. We will read and write and
appreciate poetry with images from
nature at its core.

URBAN STARGAZERS

Thursdays, November 8 &
December 13
7 p.m.

For adults
Free - donations appreciated

Join us for information
and stargazing.

VEGETARIAN POTLUCK

Thursdays, November 15 & December 20
6:30 - 8 p.m.

For adults and accompanied children
Free - donations appreciated

Bring a plate and fork along with your meatless dish to share at our meal.

PATHS TO A SUSTAINABLE FUTURE

Tuesdays, November 20, December 4 & 18
6:30 - 8 pm

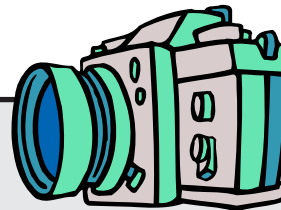
For adults
Suggested donation \$5
(Members - Free, donations appreciated)
Childcare available \$6/child (Members - \$4/child)
Call to register, 964-8505.

Our focus is facilitating local solutions to the global crises of climate change
and the decline of cheap fossil fuel energy. Contact relocalize@earthlink.net for
details about our meetings and events. Call 964-8505 to register for programs.

November: Is Globalization Sustainable? Learn about the impacts of
globalization on the environment and a model for systemic change known as
Delocalization.

December 4: Transitioning Communities to the Post Carbon Future.
Learn about a framework developed in the UK, called Transition Town, for
proactively meeting the challenges of energy descent and discuss how this
framework might be applied in southeast Wisconsin.

December 18: Sustainable Milwaukee. Ann Beier, director of the Mayor's
Office of Environmental Sustainability, will speak about sustainability initiatives
in the City of Milwaukee and how residents can get involved.



MILWAUKEE'S CENTRAL PARK PHOTOGRAPHY CONTEST

Sponsored by the
UEC Photography Club

THREE \$100 PRIZES!

PROFESSIONAL, AMATEUR AND YOUTH CATEGORIES!

The Milwaukee River corridor between North Avenue and Silver Spring
Drive is the focus of an effort to create "Milwaukee's Central Park."

The Urban Ecology Center Photography Club is sponsoring a contest to
draw more people into this central park area and to create more awareness
of the proposals set forth by the Milwaukee River Work Group. For
information about this area, please visit www.urbanecologycenter.org.

- The contest is open to all ages in three experience levels: Adult Professional, Adult Amateur and Youth under 15 years old.
- There are three entry categories: Human Interest, Nature (Landscapes and Wildlife), and Abstract.
- First, second and third place awards will be given in each category.
- For each experience level there will be one \$100 best of show award.
- A traveling exhibit of winning photos will be created.
- A complete set of entry rules and an entry form can be found at www.urbanecologycenter.org.

For general questions and information on the contest, visit
www.urbanecologycenter.org or contact Mary Dumont:
mdumont@ameritech.net or (414) 416-5633.

HIGH SCHOOL EXPLORERS

PRE-HOLIDAY HIKE

Tuesday, November 13
4 - 5:30 p.m.

For teens
\$5 (Members - \$3)
Call to register, 964-8505.

Boost your energy and meet other teens
on a hike through the Milwaukee River
corridor. Unveil the hidden mysteries
of the river valley and make new friends.
Dress for the weather in comfortable
clothing and sturdy shoes.



ASTRONOMY NOTES

by Art Paque, Community Volunteer

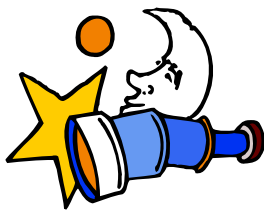
Enjoy the cool clear evenings of fall and take advantage of the celestial treats displayed above us. Set aside time and a warm coat to take in December's Geminid meteor shower; it promises to be a wonderful show. Happy Holidays!

NOVEMBER 2007

In the early morning hours until dawn on November 3rd Regulus, the brightest star in the constellation Leo, will be 0.1° from the Moon; while Saturn will be 6° to the Moon's lower left. Daylight Saving Time ends on the 4th. Get up to set your clock ahead and look for Saturn 3° above the crescent Moon very low in east. Find Venus 2° from the Moon in the early morning until moonset on the 5th. On the 7th look for Spica, the brightest star in constellation Virgo, with Mercury 4° on left and Crescent Moon on right. View after 5 a.m. in southeast until sunrise. Find Spica and Mercury 7° above Crescent Moon on the 8th. Look very low in southeast after moonrise until sunrise. Mercury and Venus will be at their closest, 26° apart on the 9th. Look very low in east southeast after Mercury rises at 5 a.m. until sunrise. On the 11th, Antares, brightest star in constellation Scorpius, will be found 1° above the Moon. Look extremely low in the southwest at sunset. Look for Jupiter 4° above Crescent Moon, very low in southwest at sunset on the 12th.

Leonid meteor shower peaks on the 17th. Watch low in the east after midnight and higher and more to the south as the night progresses.

Find Pleiades 1° from Moon during the early morning hours until moonset on the 24th. Look for Elnath, the second brightest star in constellation Taurus, 1° above the Moon after moonrise on the 25th. On the 26th, find Mars 1° below the Moon in the east northeast after moonrise. Look for Pollux, the brightest star in constellation Gemini, 3.5° above Moon and his twin, Castor 4.5° higher. See them in the east northeast after moonrise on the 27th. Find Regulus 2.5° from the Moon in early morning until sunrise on the 30th.



OPEN CLUSTER

Open clusters, sometimes called galactic clusters, can contain anywhere from a few dozen to a few hundred stars. It is assumed that they are all from the same parent nebula, and so have the same relative velocity which keeps them from dissipating.

Sometimes, there are more prominent stars in a cluster, while others tend to be less conspicuous; an example is the Pleiades. There are seven stars that are visible to the naked eye; however, these are just the brightest in the cluster. There are actually about 500 stars that belong to the cluster.

Thanks to Stuart Robbins, University of Colorado at Boulder.

New Moon is on the 9th. Full Moon, known as the Beaver Moon, on the 24th.

DECEMBER, 2007

On December 1st, find Saturn 1.5° from the Moon early morning until sunrise. On the 5th look for Spica, 3° , and Venus, 6° , from the Moon in the east southeast from moonrise until sunrise. Find Jupiter very low in southwest at sunset on the 10th. Watch the Geminid meteor shower on the 13th. Look near Castor low in the east (Mars will be 15° to the upper right) after 9 p.m., higher and more to the south later. Best viewing around 2 a.m.; expect 75 - 120 per hour. Find Pleiades, the Seven Sisters or M45, less than 1° from the Moon on the 21st.

Winter Solstice is on the 22nd. Find Mars 0.3° from Moon on the 23rd. On the 25th look for Pollux, 3° , and Castor, 7° , from the Moon during the early morning hours until sunrise. Find Regulus 0.6° from the Moon from moonrise until early morning and Saturn 7° away (moving closer through the night) on the 27th. Look for Saturn 5° above Moon from moonrise until early morning on the 28th.

New Moon is on the 9th, at 11:40 a.m. Full Moon, known as the Full Long Nights Moon, on the 23rd.

COFFESSIONS OF A BUS SNOB

continued from page 1

my breath and squeeze on to a late bus, however, I decided to give it a try. Within the first few rides, my worries were not only put to rest, but replaced by small delights that became part of my weekly routine.

Perhaps a bit proud of myself, I hypothesized that I would be the only bus rider to thank the bus driver while disembarking. Wrong! My first ride, two others said thank you as they descended the stairs and nearly every ride following someone else would share in this pleasantry. Another delight happened one evening after work when I reconnected to a friend from middle school. It had been years since we'd seen each other, but we were able to take the few minutes we shared riding in the same direction to appreciate our crossing paths.

Strangers on the bus were "regular" people: high school and college students headed to Riverside University High School or UWM, people in business suits, work uniforms, all ages, all races: a cross section of our city. I started paying attention to who sat next to whom and found that young people sat next to older people, black people sat next to white people, strong legged people gave up their seats to less sure footed people. While the morning commute was typically very quiet, there were occasional smiles and polite exchanges. Evenings brought a bit more noise, but typically from friends or colleagues sharing seats in the same row.

Plus, what a wonderful surprise it was to realize that it is possible to read on the bus. Rather than skim the paper while rushing out the door in the morning, I was actually able to read feature articles, plow through a chapter in my book or catch up on my favorite magazine, Scientific American.

As for timeliness, only once was the bus late. The smell? Besides occasionally sitting near a heavy smoker, there weren't any serious body odor issues. The dirt? City buses were quite well maintained. On snowy or icy days, the floor would get a bit messy, but otherwise floors, seats and windows seemed fairly clean.

As this winter approaches, I look forward to turning in my bike for a sheet of bus tickets. I hope to see UEC members taking advantage of this County asset.

THANK YOU FROM THE CENTER

COMMUNITY PARTNERS

Beans & Barley
beansandbarley.com
Clark Graphics
clark-graphics.com/
The Jansen Group
jansengroup.com
Harry W Schwartz Bookshops
schwartzbooks.com
Lake Park Lutheran Church
lakeparklutheran.com
Murray Hill
Neighborhood Association
Outpost Natural Foods
outpostnaturalfoods.coop
Plymouth Church
plymouth-church.org
REI
rei.com
St. Mark's Episcopal Church
stmarksmilwaukee.org
Sierra Club Building
Environmental Community
Program
wisconsin.sierraclub.org/gwg
Trek Bicycle Corp.
trekbikes.com
We Energies
we-energies.com
Whole Foods Market
wholefoodsmarket.com/
Wheel & Sprocket
wheelandsprocket.com

FOUNDATIONS / CORPORATIONS

Helen Bader Foundation
Baird Foundation
Dr. Bronner's Family
Foundation
Doolittle Charitable Trust
Fleck Foundation
Forest County Potawatomi
Community Foundation
Gonzalez Saggio & Harlan
Richard & Erhel Herzfeld
Foundation
Jansen Group
Lucy & Jack Rosenberg
Philanthropic Fund
NCHM Charities
NIA Fund
Nasgovitz Family Foundation
Rexnord Foundation
R.A. Stevens Foundation
Greater Milwaukee
Foundation
- John C. and Harriett
Cleaver Fund
- Halbert & Alice
Kadish Fund
- Jane K. Kaiser Fund
- Elisabeth S.
Kirkpatrick Fund
- William and Alicia
Schoeneich Conservation
and Preservation Fund
- Trinity Foundation Fund

WASHINGTON PARK FOUNDATIONS / CORPORATIONS

Greater Milwaukee
Foundation - Trinity
Foundation Fund
Harley Davidson Foundation
Miller Brewing Company
Windhover Foundation

GIFTS IN HONOR OF...

Robert Graumann
- Amy Hopkins
Dan Gray
- Donald & Barbara
Gilmore, Jr.
Fred and Susie Kasten
- Julie & Mason Ross
John & Sue Krezoski
- James & Catherine Lathrop
Ruth Oswald
- Cynthia & Jeffrey Davis
Laura Vargo and Kris Roberts
- S. Harvey Mudd

GIFTS IN MEMORY OF...

Louise Budde
- Jeff & Debbe Callesen
Glenn Pelton
- Mary Woida
George Saunders
- James C. Everson &
Mary A. Mitchell
Dr Albin Schelper
- Arlene Clowers
Marjorie L. Stealey
- Stephanie Sandy
Frank Zeidler
- Rick & Dixie Deines

DONORS

We'd like to thank those who have renewed their membership, began a new membership or purchased a gift membership. Your generosity is an important part of the Center's support. Below are the people who gave above a membership.

The Kubala Washatko
Architects, Inc.
Jeff & Heather Anthony
Jennifer Bolger
Hanna & Erik Brandt
Carol & Bob Diggelman
Clayton & Lissa Eggie
Paul Fleckenstein
Kim Forbeck & Todd
Dunsirn Family
Jeff & Kathleen Geygan
Jill & Jason Gilbert
Steve Gitman
Roberta Hanus
Amy Johnson
Judy Knight & Al Rank
Jon Knopp
Sandra Knorr
Barb Koenig
Julilly Kohler
Dan Krzysik
Chris Lane
Steven Looft & Cathleen Reilly
Vala Mohr
Ian Morley
S. Harvey Mudd &
Marion Mudd
Dan Neite
Heather Nelson
Katherine M. Smith
Marianne Soldavini &
Gary Giombi
Gina Spang
Vickie & Timothy Strattner
Sally M. Tolan
D. Michael &
Orchard Utzinger
Joseph & Margene Woida
Leslie Woodruff &
Paul Gegenhuber
Amy Wurlitzer Hopkins

2006-07 FUND DRIVE DONORS

Thank you to all of you that responded to our fiscal year end request to support the 2006-07 Annual Campaign. With your help we met our goal!

Anonymous
Patty & Gary Ahrens
Stephen & Susan Arnhold
Bill Baldus
Anne & Jon Bales
Margaret A. & Andrew P.
Baniukiewicz
Meg Bartness-Lee &
Donald Lee
Inga & Freidrich Bauer
John Becker & Mary Stott
Debbie Becwar
Mary & James Bellore
Todd & Betty Berens
Eric Berg
Joseph & Janie Besharse
Nicole Bickham &
Lance Weinhardt
Richard Birch &
Elisa Castellon
John & Maryann Birkholz
Jane Bowers
Joan Brenk
Barbara Brennan
Margaret Broad
Lynn Broaddus &
Marc Gorelick
Michael & Judy Broderick
Janice Brovet
Robert Buskirk & Lori Pagel
Patricia Calvy
James R. & Eldeen Carpenter
Liya Chernyakova
Sandra Christensen
Tony & Chris Clements
Andrew Cook
Rose Daitzman
Deborah Daley
Mark & Cheri Damkoehler
Alice & Jerry Davis
Lou, Jackie & Chris Davit
Nancy & Abigail Debnik &
Carol Tsao Family
Patricia DeFraim
Max, Tim & Michelle Detzer
Scott & Cheryl Diehl
Laura Drake &
Jun & Henry Zhang
Sally Duback &
Warren Kreunen
Todd Dunsirn
Frank Evans
Beth Fehlauer
John T. & Jodie L. Fenske
Mrs. Verena Fjermestad
Christina Flood
Margot Fuchs
Laurie Geisel &
Bruce Thompson
Richard & Melanie Graham
Jean A. Groshek
Joyce & Jon Gudeman
Chris Hansen
Jon Helminiak
David Hetzel
Dr. E. Alexander &
Barbara Hill
Kristin Hill &
Sanjay Deshpande
Carole Hoefs
Skip & Paula
Hoffmann Family
Paul Hunter & Sophie Kramer
Joan Janus
Karen E. Jensen
Carol Johnson

Carol Johnstone & Family
Gabriele Jung
Eleanor A. Jung
Russ Kafka
Maureen M. Kane
The Katz Family
William & Kathy Kean
Ken Kehl
Mary E. Kelly
Marge Kieckhefer
Patricia A. Kiefer
Helen Kittsley
Peter & Lisa Koneazny
Jeff Kurz & Jim Martell
Michael Kusic &
Nicole Ralston
Steven & Michelle
Lautenschlager
Pat & Mark Levine
Mary L. Lewis
Jean S. Lindemann
Theresa Lins
Mary & Paul Lourich
The Lubotsky &
Yanasak Family
Elizabeth Mann
Karol Marciano
Richard & Tammy Mathewson

Mark Matthias &
Jennifer Martin
Jim McGinity
David McIntosh
Angela McManaman &
Sachin Chheda
Mary Meurer
Wesley & Barb Miller
Christopher Miller &
Natalie Quartullo
Joseph Miller
Dave & Lisa Misky
Kara Moore
Jim & Joan Morningstar
Patricia & George Mueller
Judy Navis
Jean Neal
Tom Nelson
Gary Nikolaus &
Donna LaFlamme Nikolaus
James & Christine O'Brien
Mary O'Leary-Michalski &
Stephen Michalski
Jefren Olsen
Joel Ottenstein
Lorrie Otto
Virginia Palmer
Sarah & Matthew Parlier
Mr. & Mrs. Stuart Parsons
Tom Pelletier
Louise & David Petering
Tom & Connie Pexton
Kathleen & Peter Piaskowski
Linda Presto
David Pritchard &
Kathy Rogers
Keith & Patricia Prochnow
Kate Huston Raab
La Vonne Rau
Red & Kate Renchin
Ruth Renzelmann
Anne Marie & Jim Rhodes
Robert Rondini &
Jon Cottrell
Fred Ruenzel
Pat & Ron Santilli
Jim Schleif & Bill Morley
Tim & Margaret Schoewe
Michael R. Schultz
Kathleen Schwade
Carl & Barbara Schwartz
Patricia Shires
Charlie Simmonds
N. Lee Skibicki
Darrell Smith
Dale Snider

Dot Spransy
Loretto & Dick Steinmetz
Crocker Stephenson &
Jeanne Dawson
Mary & Robert Stetson
Gertrude Stillman
Annette Stoddard-Freeman
David & Nancy Stone
Katie Stubbendick
Ann Terwilliger
Susan Thaller & Sean Shields
Brian & Jodie Thill
Barbara & Leon Todd
Susan & Mark Trafton
K. Anne Tremel
Mr. & Mrs. David Uihlein Sr.
Valerie Valentine
Elizabeth Stephan Vogt
Dr. Roberta S. Wallace
Ingrid Ward
Ann & Peter White
Ms. Ruth D. Wilson
Robert L. Wilson
George Woodland, Sr.
Diane Wright
Frances Wurlitzer
John & Mary Young
Gordon H. Zion

IN KIND DONORS

Anonymous
Eva Baez
Shelly Baumgardt
Robert Bialecki
Nicole Bickham
Jim Buraczewski
Evelyn Ericson
Lyn Falk
David Froiland/
Foley & Lardner
Pieter Godfrey
Ann & Dean Graf
Ann Hacker
Mary Kelly
Judy Knight
Jim Maurer
Steve Morse
National Audubon Society
Laura & Tony Paunan
David Riemer
Terry Rindt
Bill Rumpf
Stephanie Sandy
Vicki Shober Company, Inc.
Patry Sibbensen
Jody Steren
Dave VanderZanden/
School Specialty
VanHandel Family
Edie Walter
Gordon Zion

FALL FESTIVAL DONORS

All of the volunteers
Blue Heron Wildlife Sanctuary
Fox and Branch
Friends of Milwaukee's Rivers
Julie Kane and Tom Plutshack
Bob McSweeney
Milwaukee Fire Department
Milwaukee River Work Group
Stephanie Sandy
Whole Foods Market

WASHINGTON PARK INKIND

Clark Consulting, Lynn Allen
Mario Costantini/
La Lune Collection
Keith & Ann Hacker

JOIN OUR COMMUNITY TODAY!

MEMBERSHIP

Renew or begin your membership, choose one:

- Individual (\$25) includes guest Family (\$35) Student (\$12)

Financial assistance is available. Please call Ginger Duiven, Development Manager at x106 or gduiven@urbanecologycenter.org for details.

Give a gift membership:

- Individual (\$25) includes guest Family (\$35) Student (\$12)

Recipient Name _____

Address _____

City, State, Zip _____

Day Phone _____ Eve. _____

Email _____

Send the announcement card to

- Me Gift recipient Card picked up

Occasion _____ Deliver by _____

DONATION (IN ADDITION TO MEMBERSHIP)

Please accept my gift to support:

- A community program (\$50)
- One half day for a school class (\$125)
- One full day for a school class (\$250)
- A Citizen Science project (\$500)
- Improved Riverside Park trails (\$1,000)
- A school for one year (\$5,000)
- Other \$ _____

Total Enclosed _____

Name _____

Address _____

City _____

State/Zip _____

Phone _____

Email _____

My neighborhood park is

- Riverside Washington I love them all!

I would like to volunteer. Please contact me.

Charge my membership to: Master Card Visa

Card Number _____ - _____ - _____ - _____

Expiration Date ____/____/____

Signature _____ Date _____

Please make your check payable to:

Urban Ecology Center and return it with this form to:

Riverside Park, 1500 E. Park Place
Milwaukee, Wisconsin 53211
www.UrbanEcologyCenter.org



Male red bat (*Lasiurus borealis*) that was caught in a mist net near the Riverside Park long-term bat station last September. Photo thanks to Dave Redell, Bat Ecologist, Wisconsin Department of Natural Resources.



SO THERE ARE BATS IN RIVERSIDE PARK!

Riverside Park
1500 E. Park Place
Milwaukee, WI 53211



Non-Profit Org.
U.S. Postage
PAID
Milwaukee, WI.
Permit
No. 5190

Contact the Center for details (414) 964-8505 or visit www.UrbanEcologyCenter.org.

SUNDAY	MONDAY	TUESDAY	WEDNESDAY	THURSDAY	FRIDAY	SATURDAY
						1 Science Saturdays (every Saturday) topic: Winter
						9a Burdock Brigade 10:30a Volunteer Orientation
						1p Animal Feeding 3p Open Climbs on the Tower Wall 4p Adult Birding Workshop: Feathers Part II
2 Science Sundays (every Sunday) topic: Winter	3 Library of Sustainability Open Hours	4 Burdock Brigade	5 Building Tour with Ken Walk with Ken	6 Birdwalk	7	8 Saturday Stewards
Noon Library of Sustainability Open Hours	4p Library of Sustainability Open Hours	9a Burdock Brigade	9a 10a 5:30p Beth's Building Tour Milwaukee River Night Hike 6:30p 7p Notes from Nepal	5:30p Intro to T'ai Chi 6:30p Photography Club		1p Animal Feeding 2:30p Animal Tracking 3p Open Climbs on the Tower Wall
Noon Library of Sustainability Open Hours	11a Naturalist Walks	9a Burdock Brigade	9a 10a 5:30p Beth's Building Tour Friends of Real Food 6p	8a Birdwalk	14	8a Christmas Bird Count
3p Knitting Circle	4p Library of Sustainability Open Hours	7p What Can You Learn From an Urban Park?	5:30p Beth's Building Tour Friends of Real Food 6p	5:30p Intro to T'ai Chi 7p Urban Echo Poets 7p Urban Stargazers		9a Burdock Brigade 10a UEC Book Club: Hundred Dollar Holiday by Bill McKibben
						1p Animal Feeding 3p Open Climbs on the Tower Wall Candlelight Walk 7 - 9 p.m.
Noon Library of Sustainability Open Hours	17 Library of Sustainability Open Hours	18 Burdock Brigade	19 Building Tour with Ken Walk with Ken	8a Birdwalk	20	9a Saturday Stewards
Noon Library of Sustainability Open Hours	4p Library of Sustainability Open Hours	9a Burdock Brigade	9a 10a 5:30p Beth's Building Tour 6:30p	5:30p Intro to T'ai Chi 6:30p Vegetarian Potluck		1p Animal Feeding
Noon Library of Sustainability Open Hours	24 UEC Closed	6:30p Paths to a Sustainable Future	26 Building Tour with Ken Walk with Ken		27	9a Saturday Stewards
2p Nature Detectives	31 Library of Sustainability Open Hours UEC closes at 5 p.m.		10a Walk with Ken	UEC closes at 5 p.m.		1p Animal Feeding
30 Noon Library of Sustainability Open Hours						