



## BREAKING FREE

by Joey Zocher, Washington Park Program Manager

The only constant in life is change. As I stood explaining to 100 students that there comes a time when you know there is a better fit for you ... somewhere else ... I realized I was reaffirming my decision to myself as well as to them. After enjoying teaching at El Puento High School, an MPS partnership school, for over eight years, the decision to leave was indeed difficult. But my students knew my passion for the environment as well as working outdoors and although sad, maturely shook my hand and wished me luck. The transition had begun.

Loving nature yet feeling at home in a city is something many find contradictory. I often find myself defending urban environmental education to my rural counterparts. Five years ago I discovered the Urban Ecology Center and realized I was not alone. Hundreds, no thousands, of people were learning about the environment right here in Milwaukee! And the numbers continue to grow.

On Monday, January 15<sup>th</sup>, I woke to a beautiful layer of snow and the layer was growing. Normally elated to find a winter wonderland waiting, my demeanor was a bit less positive this morning. Who in their right mind would show up to move the new Urban Ecology Center at Washington Park (UEC@WP) into a county park building



Urban Ecology Center's new satellite (shown above), located in Washington Park, will begin serving the schools in a two-mile radius of Washington Park in the fall of 2007.

Continued on page 4

## CENTRAL PARK IN MILWAUKEE?

by Ken Leinbach, Executive Director

I don't want to jinx us, but we might actually pull this small miracle off ... creating a 795 acre central park in Milwaukee! For the past eight years, a small group of dedicated volunteers representing a diverse array of folk from the community (business people, land owners, non profit leaders, government officials, teachers and neighbors)



have been quietly working together toward the common goal of forever preserving and protecting the 5.5 mile natural corridor that borders the Milwaukee River. That this wild green space exists at all is a miracle in its own right considering that for much of the

Continued on page 4

## ACT GLOBALLY, EAT LOCALLY CSA OPEN HOUSE & FOOD TASTING IS MARCH 31

by Dave Kozlowski, owner of Pinehold Gardens, local CSA farm

"Act Globally, Eat Locally" is the rallying cry for a good many folks concerned about the health and safety of our long distance, industrial food system. By purchasing local food, families and businesses are doing their part to reduce the environmental impact that food production, packaging and transportation have on the quality of the environment and food. This sometimes angst-ridden effort toward encouraging better food choices is catching on, but changing the food system shouldn't be like swallowing a bitter pill.

Rather than fomenting guilt to change the system, advocates for a new food system are appealing to your taste buds; they're asking for a delicious revolution. Local foods taste better. Leading chefs from around the world agree. Foods that have to be transported thousands of miles are grown more for their portability than taste. On the other hand, food raised and grown locally is tender, fresh and fully ripe when purchased.

All the environmental reasons for seeking out local food are important, but if they are not enough for you to take action on local

Continued on page 10



## URBAN ECOLOGY CENTER

*River Reflections* is created and distributed through a team effort by the following people: Carijean Buhk, Ginger Duiven, Judy Krause, Pat Mueller, Shirley Spelt and a volunteer mailing crew.

Contributing writers: Rose Daitzman, Ginger Duiven, Matt Flower, Carolyn Kott Washburne, Dave Kozlowski, Ken Leinbach, Art Paque, Susan Winans and Joey Zoher.

*River Reflections* is a publication of the **Urban Ecology Center**. The **Urban Ecology Center** is a 501(c)3 tax exempt nonprofit organization. Its facility and programming are made possible through the generous annual contributions of 82 foundations and corporations, over 1800 member and donor families and many in-kind donors.

**No tax dollars are used to operate the Urban Ecology Center.**

To make a contribution, please see page 12 for the easy to use form or call Ginger Duiven at x106.

The **Urban Ecology Center** is a neighborhood-based, nonprofit community center located in Milwaukee's historic Riverside Park. Our mission is to preserve, enhance, and use the natural resources of Riverside Park, the Milwaukee River, and adjacent green spaces. Using this living laboratory, the Urban Ecology Center: Provides environmental education programs to neighborhood schools, Promotes environmental awareness in the community, Preserves and enhances the natural resources of Riverside Park, and Protects the Milwaukee River.

### Urban Ecology Center

Riverside Park, 1500 E. Park Place  
Milwaukee, Wisconsin 53211  
(414) 964-8505  
Fax: (414) 964-1084  
uec@urbanecologycenter.org

Hours of operation:  
Monday - Thursday: 9 a.m. - 7 p.m.  
Friday & Saturday: 9 a.m - 5 p.m.  
Sunday: 12 noon - 5 p.m.

Washington Park, 1859 N. 40<sup>th</sup> Street  
Milwaukee, Wisconsin 53208  
(414) 344-5460  
Fax: (414) 344-5462  
jzoher@urbanecologycenter.org

www.UrbanEcologyCenter.org

## DROPLETS

☹ **Costa Rica Adult and Family Travel Opportunities.** The lush green season in Costa Rica affords visitors unique opportunities for birding and wildlife viewing. Budding and experienced ornithologists can join Tim Vargo on an adult birding tour (tentative trip dates: early-mid August). Educators and families will explore rainforest, cloud forest and mangrove beaches with Dana Kaleta. If you are interested in learning more about summer Costa Rica trip dates, please contact Dana at 961-1622 for information and details.

☹ **The 5th annual Teen Adventure Challenge is on June 2, 2007.** Get a group of four teens and one adult together and plan to canoe, climb, bike and take part in other fun events. Email or call Dan Gray for registration information ([dgray@urbanecologycenter.org](mailto:dgray@urbanecologycenter.org), (414) 964-8505, x115).

☹ **Nest Quest comes to the Center!** The Center has recently been chosen as one of only four sites nationwide to pilot Cornell University's Project Nestwatch! (details at the Nest Quest Workshop listing on page 6). Other sites are the North Carolina Museum of Natural Sciences, The Science Museum of Minnesota and the Woodland Park Zoo in Seattle.

☹ **Program cancellation policy.** Because of the popularity of our Urban Adventures, we have initiated a new cancellation policy. When payment is required in advance for a program, you may cancel up to 48 hours in advance without penalty. If the Center cancels a program for any reason, the payment will be refunded or can be used toward a future program.

☹ **Many thanks to the following for their inkind donations.** Jeff & Melody Anderson – weed whacker, handmade greeting cards; Mark Budnik – guitar; Christi Clancy – sweatpants, jackets, boots; Corporate Designs Interiors/Kimball Office - chair; Susan Crawford - painting; Noel Cutright – books; EDI & Bissell – vacuum cleaner; Paul Hunter - firewood; Rennie Laing – art supplies; Gordon Marshall – bird feeder; James Maurer – printer, books; Pat Mueller - books; REI – decorations; Riveredge Bird Club - WBCI Bird Mentoring Kit; Ginny Sandquist – snow pants; Susan Schoenmarklin – kayak/canoe hybrid, paddles, life jacket; Solterra Studios – printer; Ann Wegner Lefort – hat; and Anne & Tom Zak – snow boots & snow pants.

## WISH LIST

*If you have a donation for the Center, please call Judy Krause, x102.*

- A house (see page 3)
- 7 passenger minivan
- 60 cup coffee maker
- Claw hammer
- Crayons and markers
- Garden hoe
- Gently used sweatpants
- Gloves and mittens (all sizes)
- Ice cream buckets with lids
- Indoor angle brooms
- Kayaks
- Microscope with light source
- Overhead projector
- Pelts for our Wildlife Trunk: Red Fox, Coyote, Rabbit (one grey, one white), Squirrel, Chipmunk
- Face & hand towels for rags
- Sleds
- Snow shovels
- Step stools - one, two, three steps
- Television
- Women's snow boots (sizes 7 - 9)

## For Washington Park

*If you have a donation for Washington Park, please call Joey Zoher, x126.*

- 3 telephones with two-line capabilities
- Basic tools - screwdrivers, hammer
- Binoculars
- Butterfly nets
- Canoes & paddles
- Clipboards
- Coat rack or hooks
- Extension cords & power strips
- Field guides (esp. trees, birds, insects, flowers)
- Gently used sweatpants and sweat-shirts, kids-adult sizes
- Gently used winter jackets, snow pants and boots
- GPS device
- Hand lenses/magnifying glasses
- Hats, mittens and scarves
- Kites
- Large coffee percolator
- Medium size plastic storage bins with lids
- Microscopes
- Musical instruments (acoustic - drums, guitars, mandolin, ukulele)
- Native Wisconsin animals: mounted, pelts, bones
- New children's lifejackets
- Pens/pencils
- Refrigerator (small)
- Sleds
- Small clear plastic containers
- Small stereo/boombox with CD player
- Snowshoes
- Stopwatches

## WE'VE GOT WHAT IT TAKES

by Ginger Duiven, Development Manager

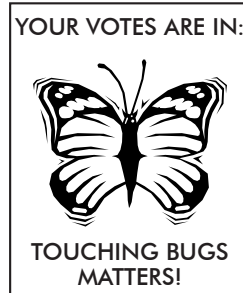
What does it take? It takes 45,000 visits. It takes 300 volunteers, students and teachers from 30 neighborhood schools, 1800 member households, 82 foundations and corporations, hundreds of donors, countless community partners, 21 board members, 15 high school and college interns and 14 full and 10 part time staff to make the Urban Ecology Center the vibrant, thriving place that it has become. It also takes the generous support from all of these people to open our (in)doors and (out)doors to each of you seven days a week.

Thank you to all of you who made a contribution to our Annual Fund Drive. Along with all the generous contributions, we appreciate the time many of you took to fill out our survey. The drawings, pictures and notes made opening the mail the highlight of each day. We learned that out of the many things the Center does, the most important work we do is teaching

children to love and respect nature.

**You told us "touching bugs matters"!**

The Annual Drive is one of our main methods of raising the funds needed to support our operating expenses each year. If you haven't yet made your contribution, please dig the letter we mailed to you out of the pile on your desk (kudos to you if you don't have a pile, mine is a bit out of hand!) send in your gift and tell us what you think! If you have misplaced the letter or never received one, please use the form on the last page to make your gift or give me a call at (414) 964-8505, x106, to make a gift by phone. We deeply appreciate your support.



## A BOLD ASK

by Ken Leinbach, Executive Director

I learned from my Dad that if you don't state your needs you are a lot less likely to get them met. We've seen the value in this lesson time and time again here at the Center. In the beginning we never thought we'd get a vacuum pump for our air pressure demonstrations, but we asked and sure enough, someone had one! Then there were the canoes. Eight years ago we had none, but wanted to lead trips. We asked for permanent loans from our small membership at the time and within a month we had eight! Thus was born our Urban Adventures program. This was followed by a request for a pickup truck. Who would have thought that within a few weeks, thanks to Angelika Speckhard, we'd be the proud owner of a truck that served us well for many years. Guitars, tandem bikes, snow shoes, house plants, clocks ... the generosity of our community is astounding. The biggest surprise was when we said we needed a hybrid car to use as a community car for our growing staff. We got one, thanks to Lynde Uihlein and the Brico Fund. Well, I'm not going to hold my breath waiting for this one to come in, but here it goes .... We need a house!

Yes, that's right. Anyone out there have a spare house lying around in the attic? Actually, I'm serious. The gift of a house would radically expand our reach. We need permanent housing within biking distance of the Center to house interns, visiting professors, guest lecturers and the like. Every teaching intern we can enlist means another 15 kids can be served each day. Offering housing to a guest lecturer can tip the scales in the favor of their accepting an invitation to come.

As the Center has grown in stature and scope, we are surprised by the number of requests we get from people across the country who wish to learn from our success, or break into the field of environmental education. In addition, we have begun an educator exchange program with our partners in Wyoming, New York and Costa Rica.

I don't know exactly how this would work, but if you can think out of the box with us, please call me at (414) 964 8505 x101. Nothing ventured, nothing gained.

## VOLUNTEER CORNER

by Susan Winans, Volunteer Coordinator

Unless otherwise noted, please contact Susan at x110 or [swinans@urbanecologycenter.org](mailto:swinans@urbanecologycenter.org) to sign up for the following volunteer opportunities

**Sap collectors and flapjack flippers!** Throughout the month of March we will be collecting sap from tapped maple trees in Riverside Park, culminating with our Annual Pancake Breakfast the morning of April 2<sup>nd</sup>. Sign up for a day to collect sap in the evenings or to volunteer to cook and clean for the breakfast.

**Spread the word!** About once a month we post information about our events in local libraries and businesses. Please consider distributing posters about once a month, either in our neighborhood or in your neighborhood if it is different from the Center's.

**Celebrate Earth Day, April 21, by volunteering at the Center.** Help out with our festival in the afternoon from noon until 4 p.m.

**Driver needed.** We are looking for a volunteer driver to transport participants in the Teens CAN program on Saturdays, April 7<sup>th</sup> through May 12<sup>th</sup>. Volunteers must have a clean driving record, be 21 years of age, and go through the Urban Ecology Center's van training. The time commitment would be 10:30 am - noon and 2 - 3:30 p.m. for six Saturdays. If interested, please contact Beth at x103 or [bfetterley@urbanecologycenter.org](mailto:bfetterley@urbanecologycenter.org).

**Photographer needed.** We are looking for photographers who would be available one or more Saturdays to capture the activities of our new teen arts program. The program runs on Saturday afternoons, noon - 2 p.m., April 7<sup>th</sup> through May 12<sup>th</sup>. If you would be available to lend your talents one or more Saturdays, please contact Beth Fetterley at x103 or [bfetterley@urbanecologycenter.org](mailto:bfetterley@urbanecologycenter.org).

**Mechanic needed.** We are in need of someone who would have the expertise to adjust or rebuild the carburetor for our Snapper snow blower. If you or someone you know can help, please contact Kimberly Fein at x150 or [kfein@urbanecologycenter.org](mailto:kfein@urbanecologycenter.org).

## THERE'S A FIRST TIME FOR EVERYTHING

by Matt Flower, Environmental Educator

Being one of the Environmental Educators here at the UEC, I've witnessed some incredible moments during our classes. We offer a wide range of classes on interesting topics which include fun outdoor adventures. Our lessons give children the crucial base knowledge on which to build a deeper understanding while exploring their outdoor world.



For example, I recall a class we taught this fall called Nature by Bike. After a lesson on bike safety, we outfitted each child with a bike and a helmet. Once we were all set to go, we headed off down the Oak Leaf Trail toward the lakefront. Along the way we stopped and introduced some very simple tree identification techniques. We discussed the different types of branching and went over a very helpful acronym to help them identify three common trees they will find in their neighborhood and parks - BAM. Each letter stands for a type of tree with opposite branching – Box Elder, Ash and Maple. The kids loved to vocalize the word

BAM and it truly helped them remember the three different types of opposite branching trees. By the time we rolled over the Brady Street pedestrian bridge, kids were feeling comfortable on their mountain bikes and were already crackerjack tree IDers. After the bridge, we came out onto Lincoln Memorial Drive. The kids were really excited at this point - the lakefront was close, the trees were really big and everyone came down the exhilarating hill after the bridge. The smiles were ear to ear! We finally reached McKinley Beach, ran down to the water's edge and tried our hand at skipping stones.

To combine the exploration of trees with a fun outdoor activity like biking turned their field trip into an adventure. This became an adventure that they all shared in and were able to talk about as an accomplishment. The majority of the kids had never been down to the lakefront and many had never skipped a stone into the water. Plus, the lesson had accomplished a beautiful occurrence, the kids asked to stop and meet the many wonderful trees located along the trail and in the park – relishing a chance to try out their newfound identification skills. I love to see kids get so excited about learning and exploring the outdoors. Everyday I'm reminded that what we do is important - we introduce children to their wonderful world.

## BREAKING FREE

continued from page 1

in a blizzard? Over twenty dedicated volunteers, that's who! Excitement filled the rooms as these amazing volunteers cleaned, organized and shared their visions with me about the park, the neighborhood and what UEC@WP has to offer.



Neighbors of the park have united in an amazing effort to revitalize the area. From bringing concerts back to the band shell to Washington Bark Dog Day, there is a true sense of camaraderie surrounding the park. UEC@WP will add one more component to Washington Park's revitalization; using the natural oasis as an outdoor classroom. Neighbors have always known of the park's remarkable environmental features and jumped at the chance to get the Urban Ecology Center's first satellite center to move in. With the generosity of Harley-Davidson Motor Company, Miller Brewing Company, Greater Milwaukee Foundation - Trinity Foundation and Windhover Foundation, their dream began to manifest. Starting in the fall of 2007, we will offer local schools programs focusing on the natural habitats found in Washington Park. Ultimately, students will learn that they, too, can feel at home in the city and still enjoy and respect the environment.

## CENTRAL PARK IN MILWAUKEE?

continued from page 1

corridor there are no legal protections on the land, no conservation easements, no zoning restrictions nor special designations. Ironically this relatively pristine land exists largely because the Milwaukee River was so abused and polluted that no one wanted to do anything along its banks. One of the best kept secrets in the city is, however, that the river is coming back, thanks largely to the removal of the North Avenue dam in 1997. Where just 15 years ago there were only two or three species of fish which could survive the toxic water, now over 33 different species thrive. For the first time in

50 years beavers have been sighted. Black crowned night herons nest on the banks. Migratory birds abound.

As people discover this natural oasis, a decision needs to be made. Do we preserve this "urban wilderness" for the public trust and develop it as park land for all to enjoy? Or does it get turned over to private interests and become a corridor of condominiums like Commerce Street downtown? We, who are doing this work, believe in the former; however we are far from being anti-development. We know that property located next to park land

tends to increase in value. Cities retain businesses and a strong employee base when they have high quality public green space. In this case, what is good for nature is good for business and good for living. It's a win, win, win.

Want to know more? Come to the Center for Preserve the Milwaukee River Corridor on Thursday, April 26, 7 - 8:30 p.m. Also, a detailed publication on this exciting project is being produced this spring and will be distributed in communities near the Milwaukee River.

## ASTRONOMY NOTES

by Art Paque, community volunteer

Celebrate the approach of spring with a total eclipse of the Moon on March 3<sup>rd</sup>. Get up early April 22<sup>nd</sup> to enjoy the Lyrid meteor shower. Enjoy ever brilliant Venus decorating the evening western sky through both March and April.

### MARCH

Morning stars in March are Mercury found very low in the east southeast, Mars found low in the southeast and Jupiter found in the south southwest. Evening stars are Venus found low in the west and Saturn found in the east southeast.

On March 1<sup>st</sup> find Saturn 1° to the right of the Moon. Find Regulus 2° to the upper right of the Moon on the 2<sup>nd</sup>. On the 3<sup>rd</sup> watch a total lunar eclipse of the Full Moon (known as the Full Worm Moon) in progress at moonrise (5:39 p.m.). Totality ends at 5:58 p.m. Find Spica 1° from the Moon on the 7<sup>th</sup>, after moonrise. Daylight Saving Time begins 2 a.m. on the 11<sup>th</sup>. Set your clocks ahead as you look for Antares 1° to the upper right of the Moon. After 6 a.m. on the 16<sup>th</sup>, find Mercury on its closest approach to Mars with the Moon between

them. Find the Moon 3° from Mercury after moonrise on the 17<sup>th</sup>. New Moon is on the 19<sup>th</sup>. The 20<sup>th</sup> is the Vernal Equinox. You can also find Venus 6° from the Moon after sunset. Spring begins on the 21<sup>st</sup>! Look for Venus 6° from the Moon after sunset and Mercury at its greatest western elongation of 28° (see sidebar) when it rises at 5:58 a.m. On the 23<sup>rd</sup> find Pleiades 2.5° from the Moon after dark. Look for Pollux 2.5° from the Moon after dark on the 27<sup>th</sup>. Find Saturn less than 1° below the Moon after dark until Saturn sets at 4 a.m. on the 28<sup>th</sup>. On the 29<sup>th</sup>, find Regulus 1° from the Moon. Look after dark until 5 a.m.

### APRIL

Early morning viewers in April will find Mars very low in the east southeast and Jupiter low in the south southwest. Evening sky watchers will find Saturn midway above the horizon in the southeast and Venus in the west.

On April 6<sup>th</sup> look for Antares 1° from the Moon after moonrise until daylight. Find Venus 2.5° from Pleiades after dark until Venus sets at 10:50 p.m. on the 11<sup>th</sup>. Find

## ELONGATION

Elongation is the angle between a planet, or other celestial body, and the Sun as seen from the Earth. March 21<sup>st</sup> will be a good opportunity to view Mercury because it will be at its greatest distance from the Sun from our perspective on Earth.

Mars 4° from the Moon after Mars rises at 4:35 a.m. until daylight on the 14<sup>th</sup>. On the 16<sup>th</sup> you can find Mercury 3° to the lower right of the Moon after Mercury rises at 5:43 a.m. until sunrise. Find Venus and Pleiades 4° from the Moon after dark until the Pleiades set at 10:30 p.m. on the 19<sup>th</sup>. The Lyrid meteor shower peaks on the 22<sup>nd</sup>. Expect 10-20 per hour. Best viewing is before dawn of the 23<sup>rd</sup> when the radiant is overhead. Find Saturn 3° from the Moon after dark until moonset on the 24<sup>th</sup>. On the 25<sup>th</sup> you can find Regulus 3° to left of the Moon and Saturn 6.5° to the right from after dark (8:15 p.m.) until moonset. Use your binoculars to find Uranus 1° above Mars; look very low in the east southeast after Mars rises until daylight on the 29<sup>th</sup>. Find Spica 1.5° above the Moon after dark until moonset at 5:03 a.m. on the 30<sup>th</sup>. Full Moon (known as the Full Pink Moon) is on the 2<sup>nd</sup> and New Moon is on 17<sup>th</sup>.

## FROM THE BOARD

by John Clancy, President, UEC Board of Directors

I am very pleased and proud to introduce our newest Urban Ecology Center board member. Mike Eitel, the owner of Trocadero, Red Light and Nomad, and co-owner of Hi-Hat, Hi-Hat Garage, Balzac and Café Hollander, brings a unique perspective to our board.

After moving back from Asia in the early 1990s where he had been teaching and studying, Mike decided to earn a Ph.D in Sustainable Development and Geography. So he packed up his truck with a few belongings that weren't still in Thailand and started driving toward the University of California-Davis. However, when he got to Iowa, he learned that the program had lost its funding, and consequently so had he.

Fortunately for Milwaukee, Mike returned and decided to bring the unique perspective from his years of traveling to Milwaukee's restaurant and bar scene. Mike is also

an active member of the Brady Street Association.

Fortunately for the Center, Mike continues to have a passion for the environment. For example, Mike has served on the City's Bicycle Task Force. In addition to joining our board, Mike will be joining one of our five board-level committees.

These committees cover the following areas: marketing, development, nominating and governance, finance, and personnel. All of these committees have been very involved in helping to ensure the continued success of the Center.

The marketing committee is developing an overall and integrated marketing plan for the Center. Likewise, the development committee is planning a new major annual fund raising event, which will likely occur during the late spring or early summer of 2008. The nominating and governance

committee is helping to identify leaders in our communities, such as Mike, who can help fill important roles on both our board and our committees.

The finance committee has updated our operating budget, including the budget for the new Washington Park facility. Last but definitely not least, the personnel committee has been perhaps our most active committee. Recently, it has conducted a thorough review of our staff's health insurance and was able to obtain bids from alternate providers, which has resulted in savings of over \$20,000 to the Center.

I would like to thank all of the board and committee members for their dedicated service to the Center. With their work, in combination with that of our dedicated staff, the Center will continue to be a wonderful, ever-changing place. Please visit our website at [UrbanEcologyCenter.org](http://UrbanEcologyCenter.org) to see a complete board list.

## MARCH - APRIL CALENDAR OF PROGRAMS

Unless otherwise indicated, participants meet at the Urban Ecology Center, 1500 E. Park Place. Scholarships are available for all fee-based programs. For general information call (414) 964-8505 or visit [www.UrbanEcologyCenter.org](http://www.UrbanEcologyCenter.org) Programs marked with an \* are not accessible for persons with physical disabilities. All others have limited accessibility. Call if you have accessibility concerns.

### SPECIAL EVENTS



## EARTH DAY FESTIVAL!

Saturday,  
April 21  
12 noon - 4 p.m.  
Free for all ages

Join us in Riverside Park for:

Sierra Club's book launch: <i>Kids' Guide to the Outdoors</i>	
Music	Hay Sledding
Rock Climbing	Carriage Rides
Bike Safety Inspections	Nature Hikes
Crafts	Resource Booths

#### Morning Events:

9 - 11:30 a.m.

#### NEST QUEST WORKSHOP

Please register by Monday, April 16.

Cornell University and the Center are looking for individuals and families to participate in a national pilot program to monitor birds nesting in your neighborhood. Participants become "citizen scientists," learning how to collect valuable data that will be used by some of the world's most renowned bird scientists.

9 a.m. - 12 noon

#### RIVER CLEAN UP BY CANOE -

For high school age youth

Take part in Friends of Milwaukee's Rivers annual Spring River Clean Up. We will use canoes to get to sections of the river and river bank that are hard to clean up from shore. It is a fun way to serve the community and the river.

9:30 a.m. - 12 noon

#### ANNUAL RIVER TO LAKE HIKE

Enjoy a morning hike along the Milwaukee River, across the narrowest spot between the river and lake to Lake Michigan and back along Olmsted-designed Newberry Boulevard.

### SAVE THE DATE

## INTERNATIONAL MIGRATORY BIRD DAY

Saturday May 12<sup>th</sup>, noon - 4 p.m.



#### ALDO LEOPOLD WEEKEND

March 3 & 4  
10 - 4 and 1 - 4

For everyone

Free - donations appreciated

If you are interested in reading an excerpt during the weekend, please contact Sara Vondrachek, 964-8505 x111.

Gather with your family and friends and listen to community members read aloud from Aldo Leopold's *A Sand County Almanac*. Activities include hikes, journaling, music and a local speaker. Children will also enjoy activities planned throughout the weekend to inspire the next generation of environmentalists!

#### 4<sup>TH</sup> ANNUAL CSA OPEN HOUSE & FOOD TASTING

Co-sponsored by the Milwaukee CSA Initiative & Slow Foods WISE  
Saturday, March 31  
12 - 4p.m.

For everyone

Free - donations appreciated

Call to register, 964-8505.

Learn how you can get a weekly delivery of fresh produce grown locally and without pesticides. Meet the farmers who produce this food, learn about the farms and community supported agriculture, and sign up for a share. You can sample food grown by Milwaukee CSA farmers and prepared by Slow Food of Southeast Wisconsin. This event will also include children's activities and a door prize of \$300 towards a CSA share.

#### ART SHOW OPENING: "NATURAL PATTERNS" & "MOODS AND VOICES OF NATURE"

Sunday, April 1

2 - 4 p.m.

For everyone

Free - donations appreciated

Exhibit open through June 23rd. Most work available for sale.

Call to register, 964-8505.

Beki Borman, using acrylic and water media, focuses on the vivid patterns in animals and landscapes which reveal exciting dynamics about the universe we live in and the pulse with which it thrives. Kristen Westlake focuses her camera, in this show, primarily on birds and describes her work as "not taking pictures, but rather making them".

#### TEENS CONNECTED TO ARTS AND NATURE (TEENS CAN)

Saturdays, April 7 - May 12

Noon - 2 p.m.

For middle school age students

\$30, scholarships available

Call the Center, 964-8505, to sign up and for more information or email: [bfetterley@urbanecologycenter.org](mailto:bfetterley@urbanecologycenter.org).

Imagine exploring, drumming, dancing and sketching in the woods. Inspired by nature, students participating in this exciting new six week program express themselves through visual art, movement, rhythm and music. Celebrate your creations on the last day with friends and family.

#### 20<sup>TH</sup> ANNUAL EARTH POETS AND MUSICIANS - DEFENDING THE HOMELAND: PLANET EARTH

Friday, April 20

7 p.m. - Interactive poetry and music for the whole family

8 p.m. - Earth Poets and Musicians

For everyone

\$5 per person or \$10 per family (Members - free - donations appreciated) Call to register, 964-8505.

Featuring Jahmes Finlayson, Louisa Loveridge-Gallas, Holly Haebig, Jeff Poniewaz, Suzanne Rosenblatt, Harvey Taylor, and special guest: Milwaukee Poet Laureate Peggy Hong.

## FAMILY PROGRAMS

**MAPLE SUGARING IN RIVERSIDE PARK**

Sundays, March 4 & 18  
3 - 5 p.m.

For everyone

Adult: \$8 for both days \$5 for one (Members - \$5 for both days, \$3 for one)

Children: \$6 for both days, \$4 for one (Members - \$3 for both days, \$2 for one)

Maximum of \$15 per family  
Call to register, 964-8505.

Participate in the classic Wisconsin winter activity of collecting maple sap and boiling it down into syrup. On the 4th we will tap trees and on the 18th we will take part in the boiling process.

**WARM UP IN THE TIPI**

Sundays, March 11, 18 & 25  
2 - 3 p.m.

For everyone

\$1 donation appreciated  
Call to register, 964-8505.

Enjoy a fire and make a s'more.

**FRIDAY FIRE**

Friday, March 16  
7 - 9 p.m.

For everyone

\$5 per person or \$10 per family (Members - free - donations appreciated)

Call to register, 964-8505.

March features a rare solo performance from Julie Kane who plays guitar and sings Americana music with passion.

**OUR SOLAR SYSTEM AND BEYOND**

Saturday, March 17  
2 - 3:30

For everyone

\$7 or \$24 for families of 4 or more (Members - \$4 or \$12 for families of 4 or more)

Call to register, 964-8505.

Go from planet to planet exploring and experiencing our solar system. Learn amazing facts about the solar system and be prepared to venture past our solar system to compare our sun to other stars.

**NATURE DETECTIVES**

Sundays, March 25 & April 29  
1 - 2:30 p.m.

For everyone

\$7 or \$24 for families of 4 or more (Members - \$4 or \$12 for families of 4 or more)

Call to register, 964-8505.

Explore Riverside Park using magnifying glasses and doing scavenger hunts.

**JAM SESSION**

Sundays, March 25 & April 29  
3 - 5 p.m.

For everyone

Free - donations appreciated

Stop in and listen, dance, or join in playing, as musicians from the Mighty Lumberhorn play in an acoustic jam session.

**FAMILY MOVIE NIGHT**

Thursdays, March 29  
& April 26

6:30 p.m.

Free - donations appreciated

Call to register, 964-8505.

Spend an evening with your family watching a movie on the big screen. Bring an ingredient for trail mix (dried fruit, nuts, cereal, m&ms, etc) to make a "community mix" to share.

March: March of the Penguins

April: The Land Before Time VIII: The Big Freeze

**5TH ANNUAL PANCAKE BREAKFAST**

Monday, April 2  
7 - 9 a.m.

UEC Members and their guests only

\$3

Call to register, 964-8505  
by March 30<sup>th</sup>

Join your UEC family as we celebrate spring by enjoying winter's gift of fresh maple syrup made from sap collected in Riverside Park.

**FRESH WATER ECOLOGY**

Sunday, April 15  
1 - 3 p.m.

For ages 7 and up  
\$9 or \$30 for families of 4 or more (Members - \$6 or \$18 for families of 4 or more)

Examine the dynamic fresh water ecology in our lakes and rivers. Join us for a hands-on exploration that will take you from the lab to the river to explore this underwater realm.

**SCIENCE SATURDAYS AND SUNDAYS**

Saturdays drop-in between  
9:30 a.m. and 4:30 p.m.,

Sundays drop-in between  
12:30 p.m. and 4:30 p.m.

For everyone

Free - donations appreciated

March: Learn about the lives and adaptation of reptiles and observe them in our animal room.

April: Visit the worms' home. Find out what soil is made up of and about the critters that live in it.

**ANIMAL FEEDING TIME**

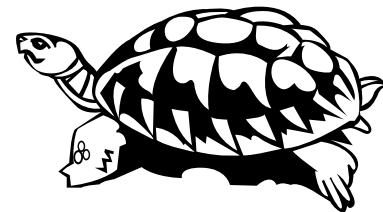
Saturdays

1 - 2 p.m.

For everyone

Free - donations appreciated

Help feed the Center's resident turtles and snakes as you learn about the animals that inhabit the river valley.



## URBAN ADVENTURES

*Advanced registration required for all Urban Adventures. Payment due at time of registration. Cancellation Policy: When payment is required in advance for a program, you may cancel up to 48 hours in advance without penalty. If the Center cancels a program for any reason, the payment will be refunded or can be used toward a future program. Call the Center at (414) 964-8505 to register at least two days before the trip. Trips run as scheduled, rain or shine.*

**MILWAUKEE RIVER HISTORY HIKE-ESTABROOK PARK**

Saturday, March 31  
9 a.m. - 12:30 p.m.

For adults and accompanied children age 12 and older

Adults \$8 (Members - \$5)

Children: \$5 (Members - \$3)

Payment due at time of registration.

Call to register, 964-8505.

Get in touch with the early spring river and its banks as we learn some of the history of the river north of Capitol Drive! We will meet at the south parking lot on the Milwaukee River Boulevard in Estabrook Park (just north of Capitol). We will hike both sides of the river, exploring the Estabrook Dam and changes in the river in that area. After the hike, those who would like can go to lunch at Riverbrook Restaurant. Total length about 4 miles. Bring water, and some money for lunch, wear boots and expect mud.

**TIPS FOR BIKE COMMUTING**

Wednesday, April 18  
6:30 - 8 p.m.

For adults

Free - donations appreciated

Call to register, 964-8505.

For any adult with an interest in commuting by bike - first-timers and seasoned riders alike! Shea Schachmeyer of the Bike Federation of Wisconsin will present topics including bicycle choice, dealing with cargo and clothing, lighting, foul weather riding, bike parking and route selection. This presentation is a prerequisite for the class "Traffic Cycling for Commuters".

**TRAFFIC CYCLING FOR COMMUTERS**

Sunday, April 29  
1 - 3 p.m.

For adults

\$25 (UEC or Bike Federation of WI Members - \$20)

Payment due at time of registration.

Call to register, 964-8505.

Adults interested in commuting by bike will build confidence with bike-handling skills and maneuvers needed to ride safely and legally in traffic and on the trail. Learn how to check your bike for safety before riding, assemble a basic tool kit, equip your bicycle for the commute, riding at night and in varying weather conditions. The class will be taught on-bike, so please either bring your bike or make arrangements with the UEC beforehand to borrow one. "Tips for Bike Commuting" is a prerequisite for this class.

**YOSEMITE WOMEN, WATERFALLS & WILDFLOWERS BACKPACK**

May 20 - 27

For adult women

Contact Dana at 961-1622 for trip details and to reserve your spot

Join Dana Kaleta and Judy Krause in Yosemite! This is prime time for waterfalls above Yosemite Valley, the emergence of bear and the unusual Snow Plant in the high country. Spend a night in Yosemite Valley cabins, then head backcountry for three nights of camping. Wrap-up with a final night in the Valley and two days and nights in San Francisco.

## ADULT LEARNING

**BIRDING BY CANOE**

Saturday, May 5  
8 a.m. - 4 p.m.  
For adults  
\$30 (Members - \$25)  
Payment due at time of  
registration.  
Call to register, 964-8505.

Join our Research and Urban  
Adventure Coordinators as they  
paddle the Bark River on the lookout  
for spring migrants. Birders of all  
experience levels are welcome. Bring  
a lunch and water. Canoes, paddles  
and PFDs provided.

**INTRODUCTION  
TO TAI CHI**

Instructor: Carrie Crossot  
Mondays, March 12 -  
September 10  
5:30 - 6:45 p.m.  
For adults, ages 16 and up  
\$12 (Members - \$10)  
per session  
Call by March 5<sup>th</sup> to register,  
964-8505.

This six-month series meets every  
Monday and introduces participants  
to Tai Chi, a practice that balances  
the inner "spiritual" self with the  
physical "earth" self and promotes  
physical, mental and spiritual health.

**EXPLOITS OF THE  
WBCI INTERNATIONAL  
COMMITTEE IN SOUTHERN  
ECUADOR**

Tuesday, March 13  
7 p.m.  
For adults  
\$5 (Members - free -  
donations appreciated)  
Call to register, 964-8505.

From parrots to toucans to tanagers  
to hummingbirds, this is one  
tropical adventure that you don't  
want to miss. Andy Paulios will  
give a pictorial overview of his recent  
birding trip to southern Ecuador  
sponsored by the Wisconsin Bird  
Conservation Initiative (WBCI) and  
the American Bird Conservancy.

**RESIDENTIAL GREEN  
BUILDING**

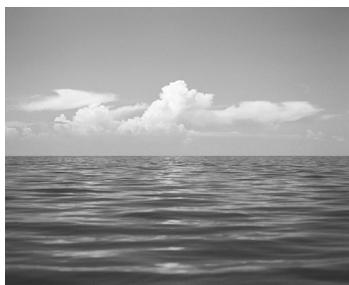
Thursday, March 15  
7 - 8:30 p.m.  
For adults  
\$10 (Members - \$5)  
Call to register, 964-8505.

Learn how increased energy efficiency,  
reduced waste and healthier materials  
are remaking the home building  
industry. We'll discuss materials,  
methods and design that qualify  
construction as "green", as well as  
some of the emerging technologies in  
this fast changing field.

**BIRD WORKSHOPS:  
THE AMAZING DIVERSITY  
OF BIRDS**

Thursday, March 15,  
5 - 6:30 p.m.  
Tuesday, April 17,  
6 - 7:30 p.m.  
For adults  
\$10 (Members - \$5)  
Free for regular bird volunteers  
Call to register, 964-8505.

We will examine the fascinating  
world of bird adaptations and  
diversity in this 2-part workshop.

**GREAT LAKES  
WATER COMPACT**

Thursday, March 22  
7 p.m.  
For adults  
Free-donations appreciated  
Call to register, 964-8505.

Learn about a new agreement  
between Great Lakes States and  
Canadian Provinces, the **Great Lakes  
Water Resources Compact**, that  
sets strict new rules for diverting  
water out of the Great Lakes Basin.  
If successful, Wisconsin has the  
chance to be the first state to establish  
a blueprint for other states to follow.  
State Representative Jon Richards  
will present the status of the proposal.

**MY GRASS IS GREENER!  
SIMPLE STEPS TO A  
NATURAL LAWN**

Presenters:  
Darrell Smith, owner, Natural  
Oasis Landscaping, and  
Amy Joyce, co-founder, Healthy  
Communities Project  
Saturday, March 24  
10 - 11:30 a.m.  
For adults  
Free - donations appreciated  
Call to register, 964-8505.

Creating a beautiful lawn doesn't  
require chemicals! Learn about  
natural ways to enrich your soil,  
keep out weeds and garden pests and  
create a healthy, lush lawn. Explore  
how to advocate for natural lawn  
practices in your neighborhood,  
making landscapes safer for us and  
the environment. Visit [www.naturaloasislandscaping.com](http://www.naturaloasislandscaping.com), and [www.healthycommunitiesproject.org](http://www.healthycommunitiesproject.org)

**UEC BOOK CLUB**

Saturdays, March 24 &  
April 28  
11 a.m. - noon  
For everyone  
Free - donations appreciated  
Call to register, 964-8505.  
**March:** *The Creation* by E.O. Wilson  
**April:** *Headless Males Make Great  
Lovers: And Other Unusual Natural  
Histories* by Marty Crump

**BIRD BANDING**

Tuesdays, April 10 - May 22  
Early mornings  
For adults and accompanied  
children  
Please call Tim Vargo, 964-  
8505 x116, for information.

Few experiences compare with  
feeling the rapid heartbeat of a bird  
in your hand while releasing it back  
to the wild. Join us for coffee, bakery  
and an up-close and personal look at  
birds during spring migration.

**PRAIRIE CHICKEN  
VIEWING -  
BUENA VISTA MARSH**

Sunday-Monday, April 15 - 16  
For adults  
\$55 plus lodging (Members  
- \$45 plus lodging) - includes  
\$10 contribution to UW-  
Stevens Point Prairie Chicken  
conservation efforts  
Call Tim Vargo, 964-8505  
x116, to register.

"It is the annual mating ritual of  
the greater prairie chicken... They  
jump, flutter and square off against  
each other beating their chicken feet  
in double time in a performance  
that inspired the species' scientific  
name, *which means* 'drummer of  
love'." - WI DNR Join us for a truly  
unforgettable experience.

**EARTH FRIENDLY INTERIOR  
FINISHES**

Presenters:  
Andy Pace, Safe Building  
Solutions and  
Lyn Falk, Solterra Studios  
Thursday, April 19  
7 - 8:30 p.m.  
For adults  
\$10 (Members - \$5)  
Call to register, 964-8505.

These days our own homes are the  
source of most of the air pollution  
we experience, including toxic paints  
and formaldehyde based adhesives.  
Find out how to make your home  
finishes more sustainable, all without  
sacrificing aesthetics.

**WATER QUALITY  
ISSUES IN THE  
WORLD'S GREAT LAKES**

Speaker:  
Dr. Harvey A. Bootsma,  
Associate Scientist, Great Lakes  
Water Institute  
Tuesday, April 24  
7 p.m.  
For adults  
\$5 (Members - free -  
donations appreciated)  
Call to register, 964-8505.

Despite their volumes, Earth's  
large lakes are being chemically,  
biologically and physically altered  
by the human activities within their  
watersheds. We'll review water  
quality issues in the world's large  
lakes over the past century, from  
North America to Africa to Asia and  
discuss future challenges.

**PRESERVE THE MILWAUKEE  
RIVER CORRIDOR**

Thursday, April 26  
7 - 8:30 p.m.  
For adults  
Free - donations appreciated  
Call to register, 964-8505.

Are you interested in permanent city  
protections to keep the Milwaukee  
River green and wild? Join us as we  
discuss how the Milwaukee River  
Work Group is proposing a special  
zoning district to preserve the natural  
character of the river.

**WASHINGTON PARK  
INFORMATION SESSION**

Washington Park Pavilion  
Saturday, April 28  
10 a.m.  
For adults  
Free-donations appreciated  
Call to register, 964-8505.

Learn about the Center's new school  
program in Washington Park and  
meet the Program Manager, Joey  
Zocher. Afterwards, join her for a  
walk through the many habitats of  
this historical Olmsted gem. Call the  
Center for directions to the pavilion.

**LIBRARY OF  
SUSTAINABILITY OPEN  
HOURS**

Sundays  
12 - 2 p.m.  
For everyone  
Free - donations appreciated  
Call to register, 964-8505.

Remodeling, adding on or building  
a new home? Visit our Library of  
Sustainability for ideas that will  
beautify your home while honoring  
the environment. This is a hands-on  
library of sample products for home  
construction and interior decorating.

## INTEREST GROUPS

**EARLY MORNING BIRDWALKS**

Thursdays  
8 a.m.  
For adults  
Free - donations appreciated  
Interested bird watchers of all levels are invited. Binoculars available.

**UEC PHOTOGRAPHY CLUB**

Thursdays, March 1 & April 5  
6:30 - 9 p.m.  
For adults  
Free - donations appreciated  
Explore nature in an artistic light and develop new skills.

**URBAN STARGAZERS**

Thursdays, March 8 & April 12  
7 p.m.  
For adults  
Free - donations appreciated  
Join us for stargazing.

**HOW TO GROW MUSHROOMS!**

Co-sponsored by the Wisconsin Mycological Society  
Friday, April 20  
7 - 9 p.m.  
For adults  
Free - donations appreciated  
Staff from Field & Forest Products in Peshtigo, WI, will discuss mushrooms and mushroom cultivation in woodland and urban settings. They will bring examples of fruiting mushrooms and will demonstrate inoculating logs.

**URBAN ECHO POETS**

Thursdays, March 8 & April 12  
7 p.m.  
For adults  
Free - donations appreciated  
Our purpose is to observe and experience nature, then to express these observations in poetry and essay. We will read and write and appreciate poetry with images from nature as its core.

**WILD ONES**

Saturdays, March 10 & April 14  
9:30 a.m.  
For adults  
Free-donations appreciated  
Contact (414) 299-9888 x1 if you have any questions.  
Wild Ones Native Plants, Natural Landscapes promotes environmentally sound landscaping.  
March: Prairie Restoration and Urban Yards with Bob Ahrenhoester  
April: Woodland and Prairie Flowers with Richard Barloga

**KNITTING CIRCLE**

Sundays, March 11, 25,  
April 8 & 22  
3 - 5 p.m.  
For everyone  
Free - donations appreciated  
If you are a new or an experienced knitter, please come join us for coffee, good conversation and knitting.

**FRIENDS OF REAL FOOD**

Wednesdays, March 14 & April 18  
6 - 8 p.m.  
For adults  
Free - donations appreciated

**March: Local Food Summit and More.** Get an update on the first Wisconsin Local Food Summit and discuss what consumers can do to promote a local food system.

**April: Planning our Food Preservation.** Annie Wegner LeFort helps us prepare for freezing, canning and drying foods. Annie is a Master Food Preserver and will explain methods of preservation, how to get ready and how to plan a food preserving calendar.

**VEGETARIAN POTLUCK**

Thursdays, March 15 & April 19  
6:30 - 8 p.m.  
For adults and accompanied children  
Free - donations appreciated  
Bring a plate and fork along with your meatless dish to share at our picnic style meal.

**PATHS TO A SUSTAINABLE FUTURE**

Tuesdays, March 20 & April 17  
6:30 - 8 p.m.  
For adults  
Adults: free  
Children: \$5 (Members - \$4)  
Call to register, 964-8505.

Join this new discussion group focused on solutions such as renewable energy, relocalization, permaculture, and intentional communities.

**March: "Words of Wisdom."**

Bring your favorite books or articles on the topics of building sustainable communities, energy issues, etc. Read excerpts or just share what was valuable to you and we'll choose several to discuss in depth at future meetings.

**April** features a screening of the film "The Power of Community: How Cuba Survived Peak Oil," with discussion afterwards.

## VOLUNTEER OPPORTUNITIES

**SATURDAY STEWARDS**

Saturdays  
9 - 10:30 a.m.  
For everyone, children ages 14 and under must be accompanied by an adult  
Free  
Call to register, 964-8505.

Kick-off your weekend by volunteering at UEC! We need your help with small and large projects inside and outdoors. Everyone is welcome, individuals and small groups, young and old.

**BURDOCK BRIGADE**

Tuesdays and Saturdays, March 3, 17, April 7 & 21  
9 - 11 a.m.  
For adults and accompanied children  
Free

Improve biodiversity in the park by removing alien plant species.



## URBAN ECOLOGY CENTER TOURS

**WEDNESDAY WALK WITH KEN**

Wednesdays  
9 a.m. - UEC Building  
10 a.m. - Riverside Park  
For adults and accompanied children  
Free - donations appreciated  
Call ahead to confirm (414) 964-8505.

Explore Riverside Park and/or our green facility with Executive Director Ken Leinbach (staff substitution on occasion).

**VOLUNTEER ORIENTATION**

Saturdays, March 10 & April 7  
10:30 a.m. - 12:30 p.m.  
or  
Wednesday, March 7  
5:30 - 7 p.m.  
or  
Tuesday, April 10  
6:30 - 8 p.m.  
For everyone  
Free - donations appreciated  
Call to register, 964-8505.

Learn about the Center's programs and how to get involved.

**NATURALIST WALKS**

Mondays, March 12, 26,  
April 9 & 23  
11 a.m. - noon  
For UEC volunteers only  
Free  
Call to register, 964-8505.

Explore the urban wilderness and get to know other volunteers and UEC educators. Build naturalist skills as educators share their experiences and skills on these fun and informal walks.

**BETH'S BUILDING TOUR**

Wednesdays  
5:30 - 6:30 p.m.  
For adults and accompanied children  
Free - donations appreciated  
Call to register, 964-8505.

Explore our green facility with Director of Education Beth Fetterley and learn about the Center's innovative educational programming.

## HIGH SCHOOL EXPLORERS

**YOUTH CAFÉ OF THE INTERFAITH YOUTH EARTH INITIATIVE**

Sponsored by the Urban Ecology Center, House of Peace, Interfaith Conference of Greater Milwaukee and Archdiocese of Milwaukee  
Sunday, April 22  
1-4:00 p.m.  
High school age youth  
Free - donations appreciated  
Call to register, 964-8505.

What does your religion say about caring for the earth? What do you say? Join teens from over 20 congregations who attend "Youth Cafés" to share with and learn from one another. Connect to environmental organizations and discover how you, your family and friends can make a difference.

## A SAND COUNTY WEEKEND

by Carolyn Kott Washburne, Community Volunteer

Last March, I was among the thirty-plus volunteer readers in a two-day marathon reading of Aldo Leopold's collection of nature writings, "A Sand County Almanac," in its entirety. And I'll be among the first to sign up this year. The reading was part of the Urban Ecology Center's first-ever Aldo Leopold Weekend.

The setting, the Community Room on the Center's lower level, was low-key and relaxed. Readers, each of whom read a chapter or two, were encouraged to introduce themselves and mention any significance Leopold has had in their lives.

Jim Kerler, who read before me, was inspired to read "A Sand County Almanac" after seeing a college roommate's poster with Leopold's quote, "Of what avail are 40 freedoms without a blank spot on the map?" David Fenner, who read after me, spoke of the spiritual comfort he has received from Leopold's words over time. I had always wanted to read the book, which has been

sitting on my coffee table for several years, so the marathon gave me the welcome opportunity to delve into my chapter, "Sky Dance" — about the dancing and preening of woodcocks — as well as many others.

Leopold (1887–1949), a forestry and wildlife researcher, is generally acknowledged as the father of wildlife conservation in the United States. He wrote over 350 scientific and policy articles in addition to "A Sand County Almanac." (For more information, contact the Aldo Leopold Foundation in Baraboo, [www.aldoleopold.org](http://www.aldoleopold.org).)

This year's Aldo Leopold Weekend, March 3 & 4, will also include children's activities, hikes, journaling, music and a local speaker. Children will also enjoy activities planned throughout the weekend to inspire the next generation of environmentalists! For more information or to sign up to read, contact Sara Vondrachek at (414) 964-8505, x111.

## ACT GLOBALLY, EAT LOCALLY

continued from page 1

food, then maybe an appeal to your appetite is. Taste the local, seasonal difference, and take part in the delicious revolution -- buy locally.

Learn how you can get a weekly delivery of fresh produce

grown locally and without pesticides at our 4<sup>th</sup> Annual Community Supported Agriculture Open House & Seasonal Food Tasting on March 31<sup>st</sup> (see calendar for details). Sample food grown by Milwaukee CSA farmers and prepared by Slow Food of Southeast Wisconsin. This event will also include children's activities and a prize of a \$300 toward a CSA share.



## ELLEN SWALLOW RICHARDS, THE FIRST LADY OF SCIENCE

by Rose Daitzman, Community Volunteer

In honor of Women's History Month, I am proud to present a pioneer in the field of ecology, Ellen Swallow Richards, the woman who founded environmental science and laid the groundwork for the knowledge that Rachel Carson passed on to us.

Ellen Swallow earned her bachelor's degree from Vassar College in 1870. After failing to find employment as an industrial chemist, she entered MIT to continue her studies, "it being understood that her admission did not establish a precedent for the general admission of females" according to the records of the meeting of the MIT Corporation on December 14, 1870. Swallow was the first woman to graduate from MIT with a B.S. in chemistry in 1873. She continued her studies and would have been awarded its first doctoral degree, but the school refused to grant this distinction to a woman.

Her interest in the environment led her to introduce the word ecology derived from the German term *oekologie*. *Oekologie* was coined by biologist Ernst Haeckel and is derived from the Greek *oikos*,

"household" and *logos*, "study"; therefore "ecology" means the "study of the household [of nature]". Richards applied scientific principles to an interdisciplinary study of biology, chemistry and earth science, focusing on the impact of human enterprise on human life. Ecology was "the worthiest of all sciences which teaches the principles on which to found... a healthy... and happy life." It had two major subdivisions: Consumer-Nutrition and Environment—Education. To her great disappointment, the Environment-Education aspect was dropped and Consumer-Nutrition became Home Economics. Botany and zoology took over the work of ecology, dismissing the interconnection to human endeavors.

Richards was also an instructor in the newly founded laboratory of sanitary chemistry, the first of its kind in the US. In 1887, she was a part of the first extensive water quality study for the Massachusetts State Board of Health. As a result, Massachusetts established the first water-quality standards as well as the first modern sewage treatment plant. Richards co-wrote the textbook *Air, Water, and Food from a Sanitary Standpoint*. She was also among the founders of the

Woods Hole Marine Biology Laboratory where Rachel Carson did much of her work.

Although she was labeled an "agitator" Richards continued to engage in struggles to improve air and water quality, particularly in schools. She was adamant about the need for all people to be educated in science and established the first programs to enable women to become public school science teachers. Richards was the force behind the movement for urban sanitation and pioneered in developing curricula in sanitary engineering, ventilation and heating systems. She compiled the first tables of water purity.

In 1910, she was finally awarded an honorary Doctor of Science degree by Smith College, the degree which was denied her by MIT. For more information on Ellen Swallow Richards see *Ellen Swallow the Woman Who Founded Ecology* by Robert Clarke, Ellen Swallow Richards: "Humanistic Oekologist," "Applied Sociologist," and the Founding of Sociology in Vol. 33 Issue 3 of the *American Sociologist* by Barbara Richardson.

## THANK YOU FROM THE CENTER

## COMMUNITY PARTNERS

Beans & Barley  
beansandbarley.com

Brewcity Bruisers  
brewcitybruisers.com

Harry W Schwartz  
Bookshops  
schwartzbooks.com

David Hobbs Honda  
davidhobbs.com

The Jansen Group  
jansengroup.com

KG Marketing & Bag  
kgbag.com

La Lune Collection  
lalunecollection.com

McDill Design  
mcdilldesign.com

Murray Hill  
Neighborhood Association

Outpost Natural Foods  
outpostnaturalfoods.coop

Plymouth Church  
plymouth-church.org

REI  
rei.com

Sierra Club Building  
Environmental Community  
Program  
wisconsin.sierraclub.org/  
gwg

Someone's in the Kitchen  
lynneryan@wi.rr.com

Trek Bicycle Corp.  
trekbikes.com

We Energies  
we-energies.com

Wheel & Sprocket  
wheelandsprocket.com

## FOUNDATIONS / CORPORATIONS

Alterra Coffee Roasters  
Alvin & Marion Birnschein  
Foundation

Gardner Foundation

Greater Milwaukee  
Foundation

Greater Milwaukee  
Foundation - Trinity  
Foundation Fund

Terri & Verne Holoubek  
Family Foundation

Kadish Foundation

Lux Foundation

George & Julie Mosher  
Family Foundation

Nasgovitz Family  
Foundation

Puelicher Foundation

Quadgraphics, Inc.

Schloenleber Foundation

US Fish & Wildlife Services

David & Julia Uihlein  
Charitable Foundation

Usinger Foundation

We Energies, through  
the Wisconsin Energy  
Corporation Foundation

Wells Fargo Foundation

Windhover Foundation

Ziemann Foundation

## GIFTS IN HONOR OF

Mike Baldwin  
- Paul and Ann Junius  
- Dennis & Deborah  
Muraro  
- David Colorez  
- Robert & Lana Adikes  
- George and Karen  
Figarino  
- Thomas & Margaret  
McMahon  
- Richard & Susan  
Batchelder  
- Matt Zumbo

Susan Biro and Frank  
Martinelli  
- Dan & Valerie Stefanich

Jennifer Bolger  
- Ginny & Mike Bolger

Beth Fetterley  
- Doris & Ed Heiser

Susie & Fred Kasten  
- Lissa & Clay Eggie

Mother Nature  
- Mark & Linda Keane

Jan Schopf  
- Jeff Becker

Anne Steinberg & Eric  
Hansen  
- Anne Channel

Sally Tolan  
- Fred Berman

Susan Winans & Judy  
Krause  
- Robert & Lois Winans

Joey Zocher  
- El Puente High School

## GIFTS IN MEMORY OF...

Diane Buck's father  
- Leslie Grinker

Judith Kott  
- Carolyn Kott Washburne

Dorothy Shea  
- Dan & Anita Krasno

## DONORS

*We'd like to thank everyone who renewed their membership, began a new membership or purchased a gift membership during our fund drive. Your generosity is an important part of the Center's support. Below are the people who gave above a membership.*

## ANNUAL FUND DRIVE

Anonymous  
Else Ankel  
Jeff & Heather Anthony  
Nancy Aten &  
Dan Collins  
Julia & J.P. Atterberry  
Diane Bacha  
Eva & Tony Baez  
Lin Barth  
Clair & Mary Baum  
Randy Beckwith  
Joseph Bernstein  
Jennifer Bolger  
Ginny & T. Michael Bolger  
Steve Books  
Anne Booth &  
Charles Trainer  
Pat Bowne

Jacqueline Boynton &  
Peter McAvoy

Mary Bykowski

Liam & Susan Callanan

Barbara J. Carson

Tim, Amy & Rob Cary

Monique Charlier

Sandra & Ahmee Christensen

Jean & Tom Churchill

Tony & Chris Clements

Arlene Clowers

Sandra Collier

Marty Collins & M.L. Perille

Brian J. Cummings

John & Karen deHartog

Anne L. DeLeo &  
Patrick T. Curley

Mike DeWan

Lloyd Dickinson &  
Kristin Bergstrom

Monica Dignam &  
Alan Balkema

Joan Dimow &  
John Moulder

Barbara & Harry Drake

David & Roberta Drews  
& Family

Ellen Drought

Tom & Bette Drought

Steven R. Duback

Todd Dunsim

Mary Dunsmore

Jane Earle

Julianna Ebert &  
Frank J. Daily

Ellen Eckman

George & Julia Evans

Dan Ezekiel &  
Martina Harmon

Samara & John Fangman

Judith Fetterley

Dan & Pat Fetterley

Michele Finley &  
Curt Johnson

Eileen & Dennis Fisher

Mrs. Verena Fjermestad

Scott & Barbara Fleming

Christina Flood

Suzu & Byron Foster

Tim & Sue Frautschi

Kathleen Gallick

Eugene Garrison

Jeff & Kathleen Geygan

Katie Gingrass

Jim & Joan Grootemaat

Jean A. Groshek

John Gurda &  
Sonja Nelson-Gurda

Ronald Gutschow

Don Haack &  
Karen Smith

Catherine Hansen

Mick & Lisa Hatch

Paul & Mary Beth Haubrich

Jill & Mal Hepburn

Dr. E. Alexander & Barbara  
Hill

Ed & Vicky Hinshaw

Carole Hoefs

Scott Holan

Verne Holoubek

Peggy Hong & Ed Kroshok

Judith Huf

Paul Hunter &  
Sophie Kramer

James L. Huston

Kate Huston

Sonja Ivanovich

Helen Jacobs

Lorraine Jacobs

Bob & Diane Jenkins

Marilyn W. John

Rick & Kathy Johnson

Don & Clare Kaminski

Maureen M. Kane

Susie & Fred Kasten

Clark Kauffman

Diane Kercheck

Jim & Liesa Kerler

Kathlynn & Jay Kirk

Judy Knight &  
Al Rank

Carrie & Rick Kohloff

Judy Krause &  
Susan Winans

Jerry & Kathy Krause

Jacqueline Lalley

Theresa Lins

Sylvia Llanas-Buckman &  
Michael Buckman

Mrs. Helen L. Loewi

Marianne & Shel Lubar

David Lucey &  
Ann Reinke

Karen Lustig

Lisa & Steve Lyons

Gerald & Elaine Mainman

Barbara Manger & William  
Lynch

Elizabeth Mann

Larry Martin

Jan & Vince Martin

Carolyn Maruggi

Norva & Bing McCutcheon

David McIntosh

Sandra & Thomas McLellan

Mike Migliano

George A. & Julie A. Mosher

Moya Mowbray &  
Roland Schroeder

Patricia H. & George N.  
Mueller

Marian & William Nasgovitz

Jean Neal

Lorrie Otto

Glenn & Jayne Pelton

Rachel & Mike Peterson

Claire S. Pflieger

Gail Povey

Larry & Jeanne Prochnow

Ann Reading

Ruth Renzelmann

Jennifer Rothstein

Erv & Joan Russell

Linda Gale Sampson

Stephanie Sandy & Allan  
Montezon

Mark & Alice Sandy

Margit Schatzman & Stephen  
Bleksley

Bob & Cato Schley

Sharon Schmidt-Bell

Kathleen & Thomas Schrader

Phil Schultz &  
Melissa Mooney

Marsha Sehler

Dulcie B. Shoener

Carl & Sandy Siegrist

David M. Sikorski &  
Amy Manoski

Joseph N. Skotarzak

Susan & Thomas Slocum

Mary B. Smith

Leonard Sobczak

George & Linda Solveson

Michael & Joan Spector

Barbara Stein

Anne Steinberg &  
Eric Hansen

Daniel J. & Judith Steininger

Loretto & Dick Steinmetz

David & Nancy Stone

Marvin Summers

Sally M. Tolan

Carl & Nancy Trimble

David & Julia Uihlein, Jr.

Debra Usinger

Dorothy K. Vallier

Emily Van Dunk & Erik Lee

Polly Van Dyke

Patricia H. Weisberg

Teri Weiss

Mr. & Mrs. Richard Weiss

Bart Wellenstein

Percy Werner

James B. & Elizabeth  
Wigdale, Sr.

Ted & Barbara Wiley

Jessica Wirth

Ned & Mary Witte

William H. Wrean, Jr.

Lorna Young &  
Steve Cuperly

David & Sandra Zalewski

Andrew A. & Carlene M.  
Ziegler

Bettie Zillman

## OTHER DONORS

Anonymous

Laura Anderko &  
Robert Dinse

Bob & Shirley Anthony

Linda Benfield &  
Steve Wallace

Melanie George Bezold

Tom & Judy Christofferson

John & Christi Clancy

Mark Clausen &  
Alice Jo Starr

Lou, Jacki & Chris Davit

David & Stephanie Dobson

Kimberly & Simie Fein

David Franczyk

Godfrey & Kahn

Mary B. Haushalter

Todd Heikkinen

Robert Iles

Dana & Robert Kaleta

Pam Kassner &  
Bill Ochowicz

Mary & Ted Kellner

James L. & Judith I. Lewis

Christy & John Librizzi  
& Family

Wynne C. Linden

Barbara Markoff

Pam Mehnart

Trish Miller

Mary Pat O'Hara &  
Gerry Slater

Matt Pamperin

Kate & Jerry Parent

Joel Quadracci

Nancy Quinn

Rae Radovich

Caitlin Reinartz &  
Kelly Humbler

Mariana Rincon

Barb Sadowski

Janet & Phil Santacrocce

Jim & Nancy Schacht  
& Family

Rachel A. Schneider &  
Tom Cheney

Ann & Mike Schueller

Julie Tamey

Jim T. & Julie Tynion III

Polly Van Dyke

Rosemary Wehnes

# JOIN OUR COMMUNITY TODAY!

## MEMBERSHIP

Membership benefits include discounts on programs, invitations to members only events, the ability to borrow our equipment, a one year newsletter subscription and more.

For information, visit our website at [www.UrbanEcologyCenter.org](http://www.UrbanEcologyCenter.org).

Choose one:

- Individual (\$25) includes guest
- Family (\$35)
- Student (\$12)

Financial assistance is available. Please call Ginger Duiven, Development Manager at x106 or [gduiven@urbanecologycenter.org](mailto:gduiven@urbanecologycenter.org) for details.

## DONATION (IN ADDITION TO MEMBERSHIP)

Please accept my gift to support:

- A community program (\$50)
- One half day for a school class (\$125)
- One full day for a school class (\$250)
- A Citizen Science project (\$500)
- Improved Riverside Park trails (\$1,000)
- A school for one year (\$3,000)
- Other \$ \_\_\_\_\_

Total Enclosed \$ \_\_\_\_\_

Name \_\_\_\_\_

Address \_\_\_\_\_

City \_\_\_\_\_

State/Zip \_\_\_\_\_

Phone \_\_\_\_\_

Email \_\_\_\_\_

I would like to volunteer. Please contact me.

Charge my membership to:  Master Card  Visa

Card Number \_\_\_\_\_ - \_\_\_\_\_ - \_\_\_\_\_ - \_\_\_\_\_

Expiration Date \_\_\_\_/\_\_\_\_

Signature \_\_\_\_\_

Date \_\_\_\_\_

Please make your check payable to:

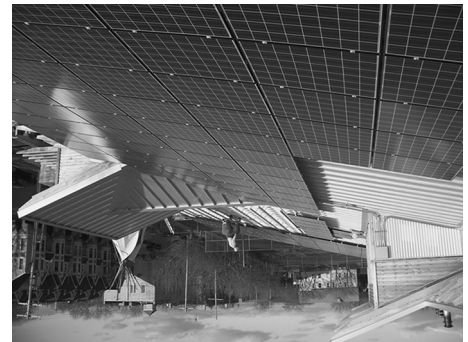
**Urban Ecology Center** and return it with this form to:

Riverside Park, 1500 E. Park Place  
Milwaukee, Wisconsin 53211  
[www.UrbanEcologyCenter.org](http://www.UrbanEcologyCenter.org)



## EARTH DAY FESTIVAL!

- ALDO LEOPOLD WEEKEND** March 3 & 4
- ART SHOW OPENING** Sunday, April 1
- TEENS CONNECTED TO ARTS AND NATURE** Saturdays, April 7 - May 12
- CSA OPEN HOUSE & SEASONAL FOOD TASTING** Saturday, March 31



## WISCONSIN'S LARGEST SOLAR ARRAY ON OUR ROOF!

Riverside Park  
1500 E. Park Place  
Milwaukee, WI 53211



Non-Profit Org.  
U.S. Postage  
PAID  
Milwaukee, WI.  
Permit  
No. 5190

Contact the Center for details (414) 964-8505 or visit [www.UrbanEcologyCenter.org](http://www.UrbanEcologyCenter.org). Hours: Monday - Thursday 9a-7p, Friday - Saturday 9a-5p, Sunday 12 noon-5p

SUNDAY	MONDAY	TUESDAY	WEDNESDAY	THURSDAY	FRIDAY	SATURDAY
<p>Science Sundays (every Sunday) topic: Learn about the lives and adaptation of reptiles</p> <p>Noon Library of Sustainability Open Hours</p> <p><b>Aldo Leopold Weekend 1p</b></p> <p>3p Maple Sugaring in Riverside Park</p>	<p>5</p> <p>9a Burdock Brigade</p> <p>7p Beth's Building Tour Volunteer Orientation</p>	<p>6</p> <p>9a Burdock Brigade</p> <p>10a Building Tour with Ken Walk with Ken</p> <p>5:30p Beth's Building Tour Volunteer Orientation</p> <p>5:30p</p>	<p>7</p> <p>8a Birdwalk</p> <p>7p Urban Stargazers Urban Echo Poets</p>	<p>1</p> <p>8a Birdwalk</p> <p>6:30p Urban Ecology Center Photo Club</p>	<p>2</p>	<p>3</p> <p>Science Saturdays (every Saturday) topic: Learn about the lives and adaptation of reptiles</p> <p>9a Burdock Brigade</p> <p>9a Saturday Stewards</p> <p><b>Aldo Leopold Weekend 10a</b></p> <p>1p Animal Feeding</p> <p>9a Saturday Stewards Wild Ones Volunteer Orientation</p> <p>1p Animal Feeding</p>
<p>4</p> <p>Science Sundays (every Sunday) topic: Learn about the lives and adaptation of reptiles</p> <p>Noon Library of Sustainability Open Hours</p> <p><b>Aldo Leopold Weekend 1p</b></p> <p>3p Maple Sugaring in Riverside Park</p>	<p>5</p> <p>9a Burdock Brigade</p> <p>7p Beth's Building Tour Volunteer Orientation</p>	<p>6</p> <p>9a Burdock Brigade</p> <p>10a Building Tour with Ken Walk with Ken</p> <p>5:30p Beth's Building Tour Volunteer Orientation</p> <p>5:30p</p>	<p>7</p> <p>8a Birdwalk</p> <p>7p Urban Stargazers Urban Echo Poets</p>	<p>1</p> <p>8a Birdwalk</p> <p>6:30p Urban Ecology Center Photo Club</p>	<p>2</p>	<p>10</p> <p>9a Saturday Stewards Wild Ones Volunteer Orientation</p> <p>1p Animal Feeding</p>
<p>11</p> <p>Noon Library of Sustainability Open Hours</p> <p>2p Warm up in the Tipi Knitting Circle</p> <p>3p</p>	<p>12</p> <p>11a Naturalist Walks</p> <p>5:30p Introduction to Tai Chi</p>	<p>13</p> <p>9a Burdock Brigade</p> <p>7p Exploits of the WBCI International Committee in Southern Ecuador</p>	<p>14</p> <p>9a Building Tour with Ken Walk with Ken</p> <p>10a Beth's Building Tour Friends of Real Food: Local Food Summit and More</p> <p>5:30p</p> <p>6p</p>	<p>15</p> <p>8a Birdwalk</p> <p>5p Bird Workshops: The Amazing Diversity of Birds</p> <p>6:30p Vegetarian Polluck Residential Green Building</p> <p>7p</p>	<p>16</p> <p>7p Friday Fire: Julie Kane</p>	<p>17</p> <p>9a Burdock Brigade</p> <p>9a Saturday Stewards</p> <p>1p Animal Feeding</p> <p>2p Our Solar System and Beyond</p>
<p>18</p> <p>Noon Library of Sustainability Open Hours</p> <p>2p Warm up in the Tipi</p> <p>3p Maple Sugaring in Riverside Park</p>	<p>19</p> <p>5:30p Introduction to Tai Chi</p>	<p>20</p> <p>9a Burdock Brigade</p> <p>6:30p Paths to a Sustainable Future: "Words of Wisdom"</p>	<p>21</p> <p>9a Building Tour with Ken Walk with Ken</p> <p>10a Beth's Building Tour</p> <p>5:30p</p>	<p>22</p> <p>8a Birdwalk</p> <p>7p Great Lakes Water Compact</p>	<p>23</p>	<p>24</p> <p>9a Saturday Stewards My Grass Is Greener! Simple Steps to a Natural Lawn</p> <p>10a</p> <p>11a UEC Book Club: The Creation by E.O. Wilson</p> <p>1p Animal Feeding</p>
<p>25</p> <p>Noon Library of Sustainability Open Hours</p> <p>1p Nature Detectives</p> <p>2p Warm up in the Tipi</p> <p>3p Jam Session</p> <p>3p Knitting Circle</p>	<p>26</p> <p>11a Naturalist Walks</p> <p>5:30p Introduction to Tai Chi</p>	<p>27</p> <p>9a Burdock Brigade</p>	<p>28</p> <p>9a Building Tour with Ken Walk with Ken</p> <p>10a Beth's Building Tour</p> <p>5:30p</p>	<p>29</p> <p>8a Birdwalk</p> <p>6:30p Family Movie Night: March of the Penguins</p>	<p>30</p>	<p>31</p> <p>9a Milwaukee River History Hike- Estabrook Park</p> <p>9a Saturday Stewards</p> <p><b>4th Annual CSA Open House &amp; Seasonal Food Tasting Noon</b></p> <p>1p Animal Feeding</p>

Contact the Center for details (414) 964-8505 or visit [www.UrbanEcologyCenter.org](http://www.UrbanEcologyCenter.org). Hours: Monday - Thursday 9a-7p, Friday - Saturday 9a-5p, Sunday 12 noon-5p

SUNDAY	MONDAY	TUESDAY	WEDNESDAY	THURSDAY	FRIDAY	SATURDAY
<p>1 Science Sundays (every Sunday) topic: Soil</p> <p>Noon Library of Sustainability Open Hours</p> <p><b>Art Show Opening: "Natural Patterns" &amp; "Moods and Voices of Nature" 2p</b></p>	<p>2 7a 5<sup>th</sup> Annual Pancake Breakfast</p> <p>5:30p Introduction to Tai Chi</p>	<p>3 Early 9a Bird Banding Burdock Brigade</p> <p>6:30p Volunteer Orientation</p>	<p>4 9a Building Tour with Ken</p> <p>10a Walk with Ken</p> <p>5:30p Beth's Building Tour</p>	<p>5 8a Birdwalk</p> <p>6:30p Urban Ecology Center Photo Club</p>	<p>6 Science Saturdays (every Saturday) topic: Soil</p> <p>9a Burdock Brigade</p> <p>9a Saturday Stewards</p> <p>10:30a Volunteer Orientation</p> <p><b>Teens Connected to Arts and Nature (Teens CAN) Noon</b></p> <p>1p Animal Feeding</p>	<p>7 9a Saturday Stewards Wild Ones</p> <p>1p Animal Feeding</p>
<p>8 Noon Library of Sustainability Open Hours</p> <p>3p Knitting Circle</p>	<p>9 11a Naturalist Walks</p> <p>5:30p Introduction to Tai Chi</p>	<p>10 9a Bird Banding Burdock Brigade</p> <p>6:30p Volunteer Orientation</p>	<p>11 9a Building Tour with Ken</p> <p>10a Walk with Ken</p> <p>5:30p Beth's Building Tour</p>	<p>12 8a Birdwalk</p> <p>7p Urban Stargazers</p> <p>7p Urban Echo Poets</p>	<p>13 9a Saturday Stewards Wild Ones</p> <p>1p Animal Feeding</p>	<p>14 9a Saturday Stewards Wild Ones</p> <p>1p Animal Feeding</p>
<p>15 Prairie Chicken Viewing - Buena Vista Marsh - leave</p> <p>Noon Library of Sustainability Open Hours</p> <p>1p Fresh Water Ecology</p>	<p>16 Prairie Chicken Viewing - Buena Vista Marsh - return</p> <p>5:30p Introduction to Tai Chi</p>	<p>17 9a Bird Banding Burdock Brigade</p> <p>6p Bird Workshops: The Amazing Diversity of Birds</p> <p>6:30p Paths to a Sustainable Future: Film - ...How Cuba Survived Peak Oil</p>	<p>18 9a Building Tour with Ken</p> <p>10a Walk with Ken</p> <p>5:30p Beth's Building Tour</p> <p>6:30p Tips for Bike Commuting</p> <p>6p Friends of Real Food: Planning our Food Preservation</p>	<p>19 8a Birdwalk</p> <p>6:30p Vegetarian Potluck</p> <p>7p Earth Friendly Interior Finishes</p>	<p>20 7p <b>20<sup>th</sup> Annual Earth Poets and Musicians - Defending the Homeland: Planet Earth!</b></p> <p>7p How to Grow Mushrooms!</p>	<p>21 9a <b>Nest Quest Workshop</b></p> <p>9a <b>River Clean Up by Canoe</b></p> <p>9a Burdock Brigade</p> <p>9:30a <b>Annual River to Lake Hike</b></p> <p>1p <b>Earth Day Festival! Noon - 4</b></p> <p>Animal Feeding</p>
<p>22 Noon Library of Sustainability Open Hours</p> <p>1p Youth Café of the Interfaith Youth Earth Initiative</p> <p>3p Knitting Circle</p>	<p>23 11a Naturalist Walks</p> <p>5:30p Introduction to Tai Chi</p>	<p>24 9a Bird Banding Burdock Brigade</p> <p>7p Water Quality Issues in the World's Great Lakes</p>	<p>25 9a Building Tour with Ken</p> <p>10a Walk with Ken</p> <p>5:30p Beth's Building Tour</p>	<p>26 8a Birdwalk</p> <p>6:30p Family Movie Night: <i>The Land Before Time VIII</i></p> <p>7p Preserve the Milwaukee River Corridor</p>	<p>27 9a Saturday Stewards</p> <p>10a Washington Park Information Session</p> <p>11a UFC Book Club: <i>Headless Males</i></p> <p>Make Great Lowers: and Other Unusual Natural Histories by Marty Crump</p>	<p>28 9a Saturday Stewards</p> <p>10a Washington Park Information Session</p> <p>11a UFC Book Club: <i>Headless Males</i></p> <p>Make Great Lowers: and Other Unusual Natural Histories by Marty Crump</p> <p>1p Animal Feeding</p>
<p>29 Noon Library of Sustainability Open Hours</p> <p>1p Nature Detectives</p> <p>1p Traffic Cycling for Commuters</p> <p>3p Jam Session</p>	<p>30 5:30p Introduction to Tai Chi</p>					