



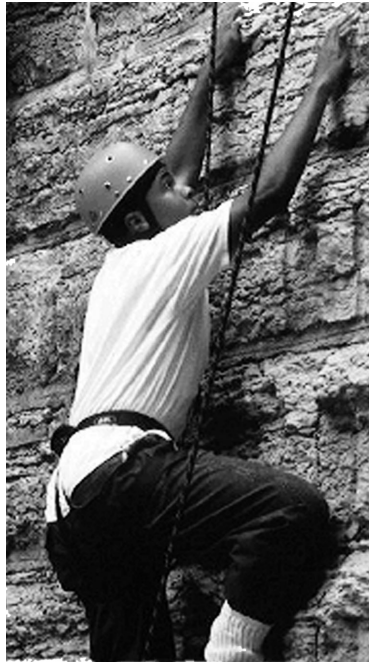
TRY SOMETHING NEW...HELP US WITH THE 2006 TEEN ADVENTURE CHALLENGE!

by Ken Leinbach, Executive Director

Over lunch Ginger asked me if I remembered the first time I tried rock climbing. The question brought me back to my first year of high school in rural northern Michigan.

We had an all school assembly, a recruitment for the military that climaxed with a team of commandos rapidly rappelling from the high ceiling of the school gym. Upon an impressive landing the commander asked our audience if we had any questions. In typical fashion my hand shot up before my brain clicked in. "Can I try that?" I asked. The school principal, knowing me well, looked me in the eye and then to the commando team. They shrugged and he called my bluff with a nod to go ahead. There was no way I was going to back down.

They outfitted me in the safety gear, gave two minutes of instruction, arranged the ropes and I climbed the wall ladder into the rafters. *Cool!* I thought ... until half way up. I could barely control the shaking of my legs as I stepped from ladder to rafter and hooked to the final rope. Then came the moment. A long pause ... a silence in the audience ... I was terrified. Were I alone there was no way I'd have



done it, but with the whole school watching ... I took a big breath, pushed away from the rafter and dropped. An unforgettable moment of terror until my hand belay caught my weight and I lowered myself not so elegantly to the ground.

Years later recounting this story I was able to feel again the exhilaration and sense of accomplishment, of trying something new, something challenging, something scary.

On June 3rd the Center will give high school students a chance to have this kind of exhilarating experience (many for the first time) in our 4th annual Teen Adventure Challenge. The Teen Adventure Challenge is a team adventure race that explores the urban wilderness found along the Milwaukee River from Estabrook to Pere Marquette parks. A team consists of four coed high school students and one adult. Each has to work together orienteering, rock climbing (yeah, it's exhilarating!), running and bicycling a set course, while solving mind teasers at certain check points. The teams each get two canoes and navigate the rapids from

Continued on page 3

IT'S FUNDAMENTAL

by Cheryl Orgas, Community Volunteer

I was intrigued by the three-day "Fundamentals of Canoeing" class when I read about it in a 2005 newsletter because I'm always looking for something physical that my son Christopher and I can do together. As most parents know, the activities that an 11-year-old would want to do with his mom are few and far between! And as a blind person, I need to find activities that I can fully participate in so it feels balanced between Christopher and me.

I called Dan Gray, the instructor, thinking there might be trouble. This hasn't been my experience at the Center, but many times when people find out that I'm blind, the door closes. But Dan was very open to the idea of having us in the class. "I'll probably have questions, but we'll be able to work it out together," he told me.

Continued on page 11

DELIGHTFUL DENISE DAVIS

by Beth Fetterley, Director of Education

Hearing shouts of joy outside my office, I peek around the corner at Denise, a soft-spoken High School Outdoor Leader, who is grinning from ear to ear. After learning that she is the 2006 Valedictorian of her class at El Puente, she cannot wait to share the news.

Denise participated in the Outdoor Leader program last summer, completing the program so successfully that she was selected for a position as a paid employee in the fall: her first job. Over the year, Denise and her high school colleagues have welcomed visitors, cared for animals and provided much needed support for the Center. Specifically, Denise enjoys working with the animals, taking the lead on care for the crayfish. What she appreciates the most, though, is getting to know the people: staff, visitors, volunteers and kids. She helps teach B'earthday parties, was one of the readers for

Continued on page 4



URBAN ECOLOGY CENTER

River Reflections is created and distributed through a team effort by the following people: McDill Design, Carijean Buhk, Judy Krause, Pat Mueller, Shirley Spelt and a volunteer mailing crew.

Contributing writers: Ginger Duiven, Kimberly Fein, Beth Fetterley, Ken Leinbach, Lorraine Jacobs, Cheryl Orgas, Art Paque, Sara Vondrachek and Susan Winans.

River Reflections is a publication of the **Urban Ecology Center**. The facility and programming are made possible through the generous annual contributions of 41 foundations and corporations, over 1600 member families and 110 in-kind donors. **No tax dollars are used to operate the Urban Ecology Center.**

To make a contribution, please see page 12 for the easy to use form or call Ginger Duiven at x106.

The **Urban Ecology Center** is a neighborhood-based, nonprofit community center located in Milwaukee's historic Riverside Park. Using this living laboratory, the **Urban Ecology Center: Provides** environmental education programs to neighborhood schools, **Promotes** environmental awareness in the community, **Preserves** and enhances the natural resources of Riverside Park, and **Protects** the Milwaukee River.

Urban Ecology Center
Riverside Park, 1500 E. Park Place
Milwaukee, Wisconsin 53211

(414) 964-8505
Fax: (414) 964-1084

uec@urbanecologycenter.org
www.UrbanEcologyCenter.org

Hours of operation:

Monday - Thursday: 9 a.m. - 7 p.m.
Friday & Saturday: 9 a.m. - 5 p.m.
Sunday: 12 noon - 5 p.m.

DROPLETS

🔹 **Bravo!** Congratulations to Channing Sabir, Outdoor Leader and volunteer, on earning a four-year scholarship from the Katherine Peters Foundation to attend Fox Valley Technical College. Channing participated in the High School Outdoor Leadership program from 2003 to 2005, studying ecology in the Teton Mountains of Wyoming and mentoring children in environmental education. He plans to pursue a degree in natural resources management.

🔹 **What are you doing this summer?** There is still time for high school students to join our Outdoor Leader Program this summer. The ideal participant attends a school within two miles of Riverside Park, has an interest in science or environmental subjects and a desire to become a leader. Students of color are encouraged to apply. Scholarships are available for students with financial need. Apply today so you won't miss the chance to learn about canoeing, rock climbing, environmental field career paths and have a chance to give back to your community. Oh, and did we mention the week-long trip to the Teton Science School in Wyoming? Hurry and apply! Check our website for details.

🔹 **A special "Thank you" to Steve Moss of Moss Piano and Harp Service** for volunteering to repair and tune the UEC piano. This was a huge undertaking that is greatly appreciated. Our staff and visitors enjoy new harmony in the building. Thank you also to John Moberg of Moberg Piano Sales and Service for loan of equipment needed for piano repair. Need a piano tuned? Call Steve at (414) 510-8448.

🔹 **Congratulations, Judy!** Our co-worker, Boy Scout Troop leader and friend, Judy Krause, was recently awarded the Boy Scouts of Milwaukee Polaris District "Youth Service Award," presented to a Unit-level Scouter for exceptional service to youth at the most important level of Scouting. She was one of a small number of individuals recognized on March 18th at the Polaris District dinner.

🔹 **Congratulations, Beth!** Our co-worker, Education Director and friend, Beth Fetterley was named to UW-Milwaukee School of Education's 2005 Educator Honor Roll which recognizes the dedication of teachers, administrators, mentors

WISH LIST

If you have a donation for the Center, please call Judy Krause, x102.

- **Minivan (7 passenger minimum) for next school year**
- Teen Adventure Challenge prizes (in sets of five)
 - Food gift certificates
 - Headlamps
 - Nalgene water bottles
 - Backpacks/bookbags
 - Fleece tops
 - Retail gift certificates
- Used CD's – they will become the scales of a giant fish that will cover the venting ducts
- Microwave
- Bike rack for our Toyota Prius
- Old or retired parachutes
- Firewood
- Unicycle
- Gently used sweatpants
- Heavy duty cordless drill & screwdriver w/charger
- Skewers for roasting marshmallows
- Portable sound system with microphones
- Table top letter folder
- Step stools

and schools and the important contributions they have made in others' successes.

🔹 **Sad to say goodbye.** Diane Burnham, our rental coordinator and extraordinarily talented business intern, will be leaving the Center in June. Diane, who helped us in so many ways from special events to outreach to rentals to bringing in her sister to teach belly dancing, will be graduating from UW-Milwaukee with a Master's in Urban Studies. We'll miss her enthusiasm and sense of humor and wish her the best in her future endeavors. See ya chica!

🔹 **Growing season.** In March 2004 the Center had 500 member households. By March 2005 the count had grown to 1151! We asked for your help to meet our ambitious goal of 1500 members by the end of 2005. We are excited to report that with your help we have met that goal. As of March 2006 the Center has 1644 member households! Thank each of you for your membership support. Together we are building a lively community.

HELP US WITH THE 2006 TEEN ADVENTURE CHALLENGE!

continued from page 1

the Estabrook Dam to the grand finish at the RiverSplash festival!

This is a fund raising event UEC style; it's good for our sponsors, a blast for the high school participants, fun for volunteers, fits our mission of connecting youth to urban nature and supports the important work of the Center.

This is how the fundraising part works. Instead of asking corporations and community supporters to sponsor a dinner and silent auction, we ask our community minded friends to sponsor a team of high school students on a day-long adventure in and along the urban Milwaukee River valley. Each year the event has grown and this year is expected to be bigger than ever. Our goal is 20 teams! Teams come from high schools all over the region with central city schools joining suburban schools in this festive multiethnic urban adventure. Thanks to donations from Trek Bicycles and Wheel and Sprocket a new bicycling component will be added this year.

Because of the number of teams involved we need more volunteers, more sponsors and more spectators.

HOW TO GET INVOLVED

Sponsor a team: Business and community sponsors are still needed at \$500 and \$1,000 categories. If you or your place of work

would be interested in sponsoring a team or part of a team please call Ginger Duiven at x106. Sponsors receive publicity through the Center and at Riversplash. *Add your company's name to the list on page 11.*

Get a team together: Reserve a spot today! Contact Dan at x115 or dgray@urbanecologycenter.org for a reservation form. Teams already registered are: COA, El Puente High School - 2 teams, Bay View High School, Washington High School of Expeditionary Learning - 2 teams, Boy Scouts, Shorewood area - 2 teams, Running Rebels Community Center - 2 teams, Germantown High School, Spotted Eagle High School, Home Schoolers - Greenfield. There is still room for a few more!

Volunteer: Want to know a secret? The volunteers have almost as much fun at this event as the participants. You don't have to know how to rock climb or canoe to volunteer. There are many opportunities available. Check the Volunteer Corner (right) for more information.

Cheer: Best places to watch are the North Avenue pedestrian bridge, and along the river at the south end of Pere Marquette Park, or between Michigan & Clybourn streets. Then be sure to cheer for the winning teams as they take the Pere Marquette Park stage at Riversplash! at 3 p.m. for an awards ceremony.

FROM THE BOARD

by Lorraine Jacobs, President, UEC Board of Directors

With UEC support growing and our school programs expanding, this is an exciting time to be on the Board of Directors! Due to the extraordinary growth of the organization within the past year and a half, the Board and staff leadership at UEC have begun a new strategic planning process. We are reviewing our programs, funding goals, mission statement and staffing needs in order to fine tune the future of the organization. It's really all about focus.

A big part of the Executive Committee's duties include overseeing UEC's general

administration. A part of this includes an annual evaluation of Ken, UEC's Executive Director, to maintain positive, on-going communication. It also includes approving the yearly budget. The Center staff has been hard at work in developing details for the 2006-07 operating budget which will be close to \$1 million as we move to full capacity for the Neighborhood Environmental Education Project students. With your help and the help of our enthusiastic Board we will meet this budget and keep UEC growing.

VOLUNTEER CORNER

by Susan Winans, Volunteer Coordinator

Visit the Volunteer Lounge!

If you've visited the Center lately, you may have noticed some changes happening on the second floor. The volunteer lounge has several new additions. Make a button with your name so staff and visitors recognize you as a volunteer. Want to know about upcoming opportunities? Check out the bulletin board. Need to safeguard your belongings while you volunteer? Please use the lockers in this room. And don't forget to log your hours in the book!

Park Ranger

Sign up with a friend to walk through Riverside Park two hours each week. Help keep the park and playground clean and safe for children. Receive a free UEC Park Ranger T-shirt for your efforts. Please contact Samantha to sign up, 847-207-9910.

International Migratory Bird Day (IMBD)

Our first ever celebration of IMBD will be happening on Saturday, May 13th. Volunteers are needed to greet visitors, monitor the silent auction, set up and clean up the day's events. Come celebrate our feathered friends. Call Kimberly Fein, x150, for more information.

Weed Out!

Join us every Saturday in May, 9 to 10:30 a.m., as we work to rid Riverside Park of invasive species. On May 20th celebrate our efforts with a lunch of hotdogs, brats and veggie dogs. Register by May 17th so we can prepare for lunch. Contact Susan, x110, for more information.

Teen Adventure Challenge 2006

Our 4th annual Teen Adventure Challenge will be happening Saturday, June 3rd from 8 a.m. to 3 p.m. Help teams of high schoolers reach the finish line by belaying at the rock wall, staffing a check-point, serving as a judge or congratulating them with lunch at the end. There are various tasks and shifts throughout the day. Contact Dan, x115, or Susan, x110, for more information.

For more volunteer opportunities see page 10.

EXPLORING THE UNKNOWN

by Sara Vondrachek, Environmental Educator

We are often afraid of what we don't know. I recently observed this during one of my classes with Maryland Avenue School. We picked up the students and brought them to Hubbard Park for our popular River Connection program. The program is two-fold. For part one, the students spend a full day in the northern portion of the Milwaukee River at Riveredge Nature Center. The students don hip waders and explore the tiny creatures seeking refuge in the mud. They get a chance to look at the creatures more closely using bug boxes once they've gotten out of the water. For the second part, the students don their hip waders once more to explore the urban portion of the river at Hubbard Park. The students then draw connections between the two sections of the river.

This is one of my favorite classes to teach, because for most kids, this is their first time in the river and their excitement is hard to contain. But for some students, going into the river can be a very scary thing. Will the alligators bite them? Will they be chased by sharks?

On this particular day, there was one student who was terrified of stepping foot into the river. We hung out on a boulder near the river's edge while my co-teacher and volunteers explored with the rest of the children. I was finally able to convince the student to

turn over some of the smaller rocks next to the boulder, an excellent spot to find dragonfly larva, or caddis fly casings. Slowly, he relaxed and came to realize these tiny little creatures were harmless, plus, they were super cool to look at! Twenty minutes after he swore he would not get in the river, he was ambling towards his classmates eager to continue exploring. Experiences such as this one are what make the River Connection program so outstanding. We get to show the kids something that most of them have never seen before and help them gain a better understanding of the natural world.

We wouldn't be able to run programs like this without funding from other organizations. Thanks to United Water, a company contracted by Milwaukee Metropolitan Sewerage District to manage the treatment of Milwaukee's water, valuable experiences like River Connection will dwell in the memories of students for years to come. By funding the program, United Water helps make it possible for hundreds of Milwaukee area students to experience first-hand the plant and animal life that resides within the Milwaukee River. The River Connection program isn't popular just with the students; adults love it too! If you are interested in being a volunteer for this program, please contact Chad Thomack at x109.

IMBD – WHAT IS IT?

by Kimberly Fein, Administrative Assistant

This year the Center will become one of many organizations across the Western Hemisphere to observe International Migratory Bird Day (IMBD) on May 13. The celebration includes fun bird activities for all ages. See page six for details.

Started in 1993 by Partners in Flight, the Smithsonian Migratory Bird Center and the Cornell Lab of Ornithology, IMBD recognizes the nearly 350 species of migratory birds traveling between nesting habitats in North America and non-breeding grounds in South and Central America. Today IMBD is under the direction of the National Fish & Wildlife Foundation and U.S. Fish and Wildlife Service's Office of Migratory Bird Management but the focus remains the same - appreciation of wild birds.

We are fortunate to be located along the Great Lakes Migratory Corridor where many species stop during their long journeys. Migratory birds are some of the most beautiful and melodic songsters of the woods. But sadly, many are in decline due to compromised habitats. With that in mind, IMBD is not just a day to celebrate our wild birds but also a call to action. Raising awareness of which birds migrate, where they migrate and what constitutes a healthy habitat begins the conservation effort of research programs and management strategies necessary to save our feathered friends. So 'just for the birds' – plan to join the hundreds of thousands of people all over the world celebrating IMBD on May 13.

DELIGHTFUL DENISE DAVIS

continued from page 1

the Aldo Leopold weekend and helped with the demolition party for our former home: the double-wide trailer. In addition to all of that, Denise was one of three brave Outdoor Leaders to spend the day skiing on the coldest day in February. Not only was it well below zero, but it was the first time Denise had put on cross country skis. We had a fantastic time, staying warm with laughter, sunlight and hot chocolate. Currently Denise is preparing to visit schools to recruit participants for the 2006 High School Outdoor Leadership program.

Outside of the Center, Denise not only excels at school, but is involved in highly creative projects. A few months ago, she invited UEC staff to Walkers Point Center for the Arts, where she was displaying her photographs of the community. In addition, she and a group of her peers just produced a CD called "Troll Tales" of environmental stories for children, supported by her teacher, Joey Zocher, and funded by a Wisconsin Environmental Education Board grant.

Denise has competed for three years in the national Rube Goldberg Machine Contest. Coined the "Olympics of Complexity" this contest "is designed to pull students away from conventional problem-solving and push them into the endless chaos of imagination and intuitive thought" (from www.rube-goldberg.com). Denise loves to build things. She also loves to be outside. Growing up, Denise spent her days outside. When she wasn't playing sports like football and basketball outside, she spent her summers in Mississippi helping her grandmother tend to the gardens. Asked about her most memorable outdoor experience, Denise chuckles and says simply "Wyoming," the week long grand finale to the Outdoor Leadership summer program.



Denise plans to attend college at Alverno this fall and pursue a career in environmental engineering that combines her two loves: building things and being outside. Next time you visit the Center, please congratulate her on her successes. We are lucky to have her energy.

ASTRONOMY NOTES

by Art Paque, community volunteer

Take advantage of the spring evenings to admire less common celestial combinations; the Moon, Saturn and the Beehive star cluster (Messier Object 44) or the Moon, Venus, and the Pleiades star cluster (M45), also known as the Seven Sisters. There will also be gatherings of the Moon and three planets.

MAY

Morning's sparkle with Venus (-4.0) very low in the east as the sky brightens and Jupiter (-2.5) very low in the west southwest until 4:25 a.m. May evenings will show us Jupiter (-2.5) in the southeast, Saturn (0.3) and Mars (1.6) in the west joined by Mercury (-1.5) at month's end.

On May 3rd find Saturn 4° to the left of the Moon just after sunset. Use binoculars to find the Beehive star cluster (M 44) (4.0) 2° to the upper left of Saturn. Watch the Eta Aquarid meteor shower on the 5th-7th. Look low in the east southeast from 3:30 a.m. until dawn. Expect 10-15 per hour with peak activity on the 6th. On the 10th, look for Spica (1.0) almost touching the Moon after dark. Find Jupiter (-2.5) 6° left of the Moon after dark on the 11th. Find Mars ½° to upper right of Saturn and Mercury (0.4) below and to the right on the 17th. Also look for the stars Pollux (1.2) (left) and Castor (1.6) (right) above and to the right of Mercury. Get your binoculars on the 21st to look for Uranus (5.9) 1° above the Moon after moonrise. Venus (-4.0) is 4° from the Moon after moonrise 3:32 a.m. on

the 24th. Find Mars (1.7) is 3° to left of the crescent Moon after sunset 8:21 p.m. on the 30th. The month ends with Saturn 3° below the crescent Moon after sunset on the 31st. Also, find the Beehive cluster (M44) 1° to the upper right of Saturn. Full Moon (Full Flower/Corn Planting/Milk Moon) is on the 13th, New Moon is on the 27th.

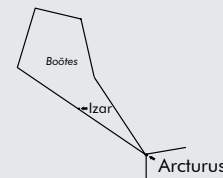
JUNE

Solitary Venus (-3.9) greets morning sky watchers; while evening viewers will spot Jupiter (-2.4) in the south southeast and Mercury (0.2), Mars (1.8) and Saturn (0.4) all in the west. From June 1st-7th find Saturn less than 1° from the Beehive cluster (M44) in the west after sunset. Find Jupiter 7° from the Moon after sunset on the 8th. Mars will be found 1° or less from Saturn with the Beehive star cluster (M44) close by from June 15th-19th. Look low in the west after sunset. Summer Solstice is on the 21st. Celebrate the longest day of the year with songs and poems at UEC. Find Venus 7° below the waning crescent Moon and the Pleiades star cluster (M45) (1.4) 7° to lower left of the Moon in the east northeast after 3:30 a.m. on the 22nd. Look for Venus 6° right of the Moon and Pleiades 3° upper right of the Moon in east northeast after moonrise on the 23rd. From 26th-28th track the waxing crescent Moon as it moves amongst Mercury, Saturn and Mars. Look very low in the west after sunset (8:35 p.m.). Find, Mercury 5° south of the Moon on the 27th. Also find Mars, Saturn, Beehive cluster

ARCTURUS

Arcturus is the second brightest star we can see from this area (Sirius is the brightest) and is the fourth brightest star in the heavens with a magnitude of

-0.04. It has a soft orange/yellow-orange color and can be located by following the curved handle of the "Big Dipper"; or, look in the Southeast about 20° above the horizon at 10 p.m. in early May to find the planet Jupiter. It will stand out brilliantly. Look straight up and slightly left from Jupiter, just over 45° above the horizon; the bright yellow-orange star is Arcturus.



Southeast, 10 p.m., May 2nd

Arcturus is 37 light years away from us in the constellation Boötes (boh OH teez), "the Herdsman". The name "Arcturus" is derived from the Greek "arktoúros" meaning "Guardian of the Bear". The bear is the constellation Ursa Major, which we commonly refer to as "The Big Dipper".

(M44), the crescent Moon and Mercury in line within 15° low in west after sunset. On 28th find the Moon 1° above Mars and 5° above Saturn. Look low in the west after sunset. Look for Regulus (1.3) 1° left of the crescent Moon (in the west after sunset) and Mars, Saturn and Mercury to lower right of the Moon on the 29th. The Full Moon (Full Strawberry/Rose/Green Corn Moon) is on the 11th and the New Moon is on the 25th.

...AND DANCE BY THE LIGHT OF THE MOON

by Ginger Duiven, Development Manager

We're busy making plans for the expansion of our popular UEC summer day camp program in order to accommodate more children. Last summer, we had an unprecedented demand for the camps and we've renewed our commitment to ensure that kids are not excluded, even for financial reasons.

Thanks to John and Christi Clancy and Steve and Lisa Lyons, who have helped us stand by this commitment. The two families hosted their second annual fundraiser in February. The event started out as a fun way to introduce the new facility to their friends and neighbors in the North Shore. The

party was such a success that Christi and Lisa generously committed to host the party once again, but with an ambitious new goal of raising \$5,000 for summer camp scholarships.

Over 70 families attended the "camp-themed" party on February 11th. The kids were treated to nature hikes, sledding, a chance to meet the center's animals, learn how to make paper and finger knit, sing camp songs and eat s'mores around the campfire in our rooftop teepee. Everyone enjoyed delicious appetizers and a great dinner. Thanks to the volunteers and families

that attended, the Lyons and Clancy event raised \$6,780 for summer camp sponsorships! This amount brings us close to our full need of \$8000 for this summer (it's not too late to help us make our goal, call Ginger at x106 for details). Special thanks go to John Clancy's firm, Godfrey & Kahn, for their generous sponsorship of the party. We would also like to thank Breadsmith, Ruhamas and Lakefront Brewery for their donations, YMCA Camp Minikani for their camp song leaders and Lynne Rhyan for her help catering the event.



MAY THROUGH JUNE CALENDAR OF PROGRAMS

Unless otherwise indicated, participants meet at the Urban Ecology Center, 1500 E. Park Place. Scholarships are available for all fee based programs. For general information call (414) 964-8505 or visit www.UrbanEcologyCenter.org Programs marked with an * are not accessible for persons with physical disabilities. All others have limited accessibility. Call if you have accessibility concerns

SPECIAL EVENTS

INTERNATIONAL MIGRATORY BIRD DAY FESTIVAL

Saturday May 13

10 a.m. – 4 p.m.

For all ages

Free

Come to our festival celebration of migrating birds supporting UEC bird and citizen science programming.

Join us for

- Bird Banding
- Children's Workshops
- Informational Displays
- Bird Feeder & Field Guide Making
- Raptor Shows
- Refreshments

Bird items for sale:

- Jewelry
- Books
- Feeders
- Houses
- Window stencil kits
- Binoculars

Bid in our Silent "Chirp" Auction

Name our special guest, a 10-ft tall talking bird!

To volunteer, donate auction items, or reserve display, space contact Kimberly at x150 or kfein@urbanecologycenter.org



TEEN ADVENTURE CHALLENGE

Saturday, June 3

8:30 a.m.

Come out and volunteer or cheer our teams on!

The Teen Adventure Challenge is a team adventure race that explores the urban wilderness found along the Milwaukee River from Estabrook to Pere Marquette parks. *For details see page 1.*

SUMMER SOLSTICE EVENING CELEBRATION

Wednesday, June 21

7:30 p.m.

For everyone, children and elders especially welcome
Free



Celebrate the longest day of the year with an evening of music, drumming and poetry led by local musician and poet Harvey Taylor. Bring an instrument to join in the drumming (or use one of ours) and a favorite song or poem to share. Meet at UEC and then join us on the hilltop overlooking the park. Come prepared to spend the evening outdoors and bring a blanket to sit on. Refreshments provided.

BIKE TO WORK WEEK 2006: MAY 15-19

Bravo to bicyclists! UEC celebrates bike commuters and recreational bicyclists for choosing healthy means of transportation.

Date	Time	Event	Details
Sunday, May 14	1 p.m.	Family Bike Ride	Meet at UEC for an exploration of the Oak Leaf Recreational Trail
Monday, May 15 - Friday, May 19	7 – 8:30 a.m.	Treats for Bicycle Commuters	Pastries, juice and coffee on the Oak Leaf Recreational Trail
Thursday, May 18	5:30 p.m.- Dinner (\$5) (<i>must pre-register</i>) 6:30 - Movie (Free)	Family Movie Night	Come see <i>The Triplets of Bellville</i> . Help us celebrate Bike to Work Week with this bike-er-ific movie.
Friday, May 19	4:30 – 5:30 p.m.	Alcohol-free Happy Hour on the Tower!	Stop in and mingle with UEC staff and other bicyclists.

URBAN ADVENTURES

Call the Center at (414) 964-8505 to register at least two days before the trip. Trips run as scheduled, rain or shine.

WILD FOODS FOR FUN, SURVIVAL AND DINNER!

Wednesday, May 10
5 - 8 p.m.

For adults and accompanied children
\$15 (Members - \$10); \$8 for children under 15 (Members - \$5)
Payment due at time of registration
Call to register.

Join Environmental Educator Kathy Palmer and Urban Adventures Coordinator Dan Gray for an evening of culinary delights. Kathy will lead an informative tour through Riverside Park pointing out edible plants that grow right here. We will return to the Center to enjoy a dinner featuring native, wild plants and animals which may have been eaten in this area for the last thousand years.

RIVER RHYTHMS CANOE TRIPS

Every Wednesday from June 7 - August 30

5:15 - 9:30 p.m.
\$25 (Members - \$20),
Children ages 12 -18, \$20 (Members - \$15)
Payment due at time of registration
Call to register.

Paddle from Riverside Park to Pere Marquette Park. Enjoy the music and festivities at River Rhythms and then paddle part way back to the rowing club boathouse. Meet at the Center.

River Rhythms 2006 Tentative Schedule

- 6/7 Eddie Butts Band
- 6/14 Mose Allison
- 6/21 Steve Cohen Blues Band
- 6/28 Brother

FUNDAMENTALS OF CANOEING CLASS - EVENING CLASS

June 19, 20, 26 & 27

5 - 8:30 p.m.
For adults and youth, 12 years and older
\$70 (Members - \$50)
Payment due at time of registration
Call to register.

This course will provide the skills and knowledge necessary for the safe enjoyment of a recreational canoe outing from home, to the water and back home again. Emphasis will be upon water safety, the skills needed for paddling on calm water and the knowledge needed to respond to the hazards associated with canoeing. The course will be taught at Lincoln Park and UEC. Participants who complete the course will receive Fundamentals of Canoeing Red Cross Certification.

URBAN ECOLOGY CENTER TOURS

WEDNESDAY WALKS WITH KEN*

Every Wednesday
9 a.m. - Urban Ecology Center building

10 a.m. - Riverside Park
For adults and accompanied children
Free - donations welcome
Call ahead to confirm.

Explore Riverside Park and/or our green facility with Executive Director, Ken Leinbach.

BETH'S BUILDING TOURS

Every Wednesday
5:30 p.m.
For adults and accompanied children
Free - donations welcome
Call ahead to confirm.

Explore our green facility with Director of Education Beth Fetterley, and learn about the Center's intriguing education program.



INTEREST GROUPS

EARLY MORNING BIRDWALKS*

Every Thursday
8 a.m.
For adults and accompanied children
Free - donations welcome

Interested bird watchers of all ability levels are invited to join us in exploring for bird life. Binoculars available.

URBAN ECOLOGY CENTER PHOTO CLUB

Thursdays, May 4 & June 1
7 p.m.
For adults
Free - donations welcome

Explore nature in an artistic light and develop new skills.

URBAN STARGAZERS

Thursdays, May 11 & June 8
7 p.m.
For adults
Free - donations welcome
For adults

May: Celestial Navigation II: Develop a basic understanding of how celestial navigation works. Dan Fetterley, back by popular demand, will also explain how to use the same methods right here in Milwaukee that the Vikings used to navigate the North Atlantic. Dan, avid sailor, has navigated 10,000 miles of sea including the Pacific, Atlantic and Indian Oceans. You do not need to have attended "Celestial Navigation I" to enjoy this presentation.

June: The Atacama Far Infrared Telescope Project in Chile: Speaker: Fred Young. Please join us for an evening of information and stargazing.

URBAN ECHO POETS

Thursdays, May 11 & June 8
7 p.m.
Free - donations welcome

Our purpose is to observe and experience nature, then to express these observations in poetry and essay. We will read and write and appreciate poetry with images from nature at its core.

VEGETARIAN POTLUCK

Thursdays, May 18 & June 15
6:30 - 8 p.m.
For adults and accompanied children
Free - donations welcome

Bring a plate and fork along with your meatless dish to share at our picnic style meal.

UEC BOOKCLUB

Saturdays, May 20 & June 17
10 - 11 a.m.
Free - donations welcome
Call to register.
Join us for conversation and refreshments as we discuss an environmentally-themed book. Participants secure their own books.
May: Red-Tails in Love by Marie Winn
June: Ishmael by Daniel Quinn



FAMILY PROGRAMS

STORYTIME IN THE PARK

Sundays, May 14 & June 11

1 - 2 p.m.

For preschool - 2nd graders accompanied by an adult \$5 (Members - \$3) per child

Families of 4 or more: \$20 (Members - \$12)

Call to register.

Listen to nature stories and meet animal friends in our classroom or look for new friends in the park!

FAMILY MOVIE NIGHT

Thursdays, May 18 & June 29

6 p.m. Picnic on the tower (optional)

6:30 p.m. Movie

For everyone

Free - dinner \$5 per person

Call to register.

Get comfy and enjoy a movie on the big screen. Come early and join us for a picnic on the tower.

May: The Triplets of Bellville

June: Winged Migration

FRIDAY FIRE

Fridays, May 19 & June 16

7 p.m. For younger audiences

7:45 p.m. Popcorn and S'mores

8:15 p.m. For all ages

\$5 per person or \$10 a family (Members - free)

Call to register.

May: Ken Haferman is Milwaukee's king of old timey banjo

June: Tim Dancing Red Hawk will share nature stories and music.

PRESCHOOL PROGRAM - BIRDS

Saturday, May 20

10 - 11:30 a.m.

For ages 3-5

\$7 (Members - \$4) per child

Call to register.

Do birds visit your backyard? Fly over to the Center and use all your senses to explore the world of these feathered friends. Listen and look for birds on a hike in Riverside Park, get a bird's eye view of the world, and even try eating like a bird.

SPRING WILDFLOWER WALK*

Saturday, May 20

2 - 3:30

For ages 5 - 14, accompanied by an adult \$7 (Members - \$4) per child
Call to register.

Join us as we explore spring wildflowers in Riverside Park. We will practice using a field guide to identify plants and enjoy the beauty of wildflowers.

DISCOVERY HIKE FOR FAMILIES*

Sundays, May 28 & June 25

1 - 2:30 p.m.

For children ages 3 & up accompanied by an adult

\$7 (Members - \$4)

Families of 4 or more: \$24 (Members - \$12)

Call to register.

Discover nature in a guided walk through the park with activities, games and stories. In case of extreme inclement weather, we will move our hike inside.

SECRETS OF SNAKES*

Sunday, June 4

2 - 4 p.m.

For ages 5 - 14, accompanied by an adult \$8 (Members - \$5) per child
Call to register.

Learn about Wisconsin's native snakes by getting an up-close look at live snakes in our Native Wisconsin Animal Room and by searching for snakes outside. Investigate the snake cover board research project happening in the park.

FAMILY RIVER FUN*

Saturday, June 10

2 - 4 p.m.

Meet at UEC at 1:45 to catch a ride or meet in the Hubbard Park parking lot at 2 p.m.

For adults & accompanied children, ages 8 and older.

\$7 (Members - \$4)

Call to register by June 8.

Damselflies, leeches and clams, oh my! Come search for these and other animals that inhabit the Milwaukee River. From the banks of the river at Hubbard Park, we will strap on hip waders and use sampling equipment and techniques to discover tiny creatures normally hidden from sight. Look under a magnifying lens where tiny insect larvae resemble miniature dragons.

ART WORKSHOP FOR CHILDREN: DRAWING THE GREAT HORNED OWL

Saturday, June 17

10 - 11:30 a.m.

For ages 6-10

\$8 (Members - \$5) per child

Call to register.

Be creative and learn how to draw the Great Horned Owl with local artist Kristin Gjerdsset. Basic colored pastel drawing techniques will be taught, as well as some amazing facts about this silent flyer of the night. Each student will go home with their own unique work of art capturing the Great Horned Owl. All levels of drawing experience are welcome. *Space is limited. Sign up early to ensure a spot in the program!*

OUTDOOR COOKING

Sunday, June 18

1 - 3 p.m.

For ages 7 - 14, accompanied by an adult \$8 (Members - \$5) per child
Call to register.

Tired of roasting hot dogs on every camping trip? Come and learn some new easy meals cooked over the fire. We will prepare and cook the food and then enjoy our tasty creations.

**SCIENCE SATURDAYS & SUNDAYS**

Every Saturday drop in any-time between

9:30 a.m. & 4:30 p.m.

Every Sunday drop in any-time between

12:30 & 4:30 p.m.

For all ages

Free - donations welcome

Discover the world of science through interactive activities.

May: Birds: Learn how to use binoculars and a field guide, and then head outside to practice identifying birds. Children accompanied by an adult may borrow binoculars.

June: Insects: Study the characteristics of insects before collecting them for an up-close look. Insect nets may be checked out by children accompanied by an adult.

ANIMAL FEEDING TIME

Every Saturday

1 p.m.

For all ages

Free - Donations welcome

Help feed the Center's resident turtles and snakes as you learn about the animals that inhabit the river valley.

SAVE THE DATE!

RIVERSIDE PARK BUTTERFLY COUNT*

Saturday, July 8

11 a. m.

Every year the North American Butterfly Association coordinates volunteers across three countries (USA, Canada & Mexico) to census butterfly populations. Join us for a stroll through Riverside Park to count & identify our resident butterflies. No experience is necessary.



ADULT LEARNING

BIRD BANDING

Tuesdays, May 1 - 30
½ hour before sunrise
- noon

For adults &
accompanied teens
Free - donations welcome
Call to register.

Few experiences compare with feeling the rapid heartbeat of a bird in your hand while releasing it back to the wild. Join us for coffee and an up-close look at birds.

FIGHTING THE INVADERS: Treatment Study of an Invasive Hybrid Aquatic Plant in Oconomowoc Lake

Speaker:
Dr. Robert C. Anderson, Professor of Biology at Wisconsin Lutheran College
Tuesday, May 9
7 p.m.

For adults
\$5 (Members - free)
Call to register.

A recent discovery of an invasive hybrid watermilfoil in Oconomowoc Lake, lead to an experimental study of various 2,4-D treatment levels during the summer of 2005. Response to the treatment during the first summer was significant; however, hybrid plants in the control area also declined during the study, resulting in the need for longer term evaluations.

CHRONICLING WISCONSIN WETLANDS: Discovering Inspiration & Renewal

Speaker:
Laurie Lawlor, author
Thursday, May 11
7 - 9 p.m.

For adults
Free - donations welcome
Call WWA to register (608-250-9971)

Award-winning Laurie Lawlor, author of *This Tender Place: The Story of a Wetland Year*, will share the process of creating her book about the plants, animals, and human inhabitants of a rare wetland in southeastern Wisconsin. Her workshop will offer aspiring writers hands-on experience using nature journals. Lawlor is the author of more than 35 books for children, young adults and adults.

COSTA RICA: RAINFOREST AND CONSERVATION ISSUES

Speaker:
Mariamalia Araya, Director of Education, Tirimbina Rainforest Center
Wednesday, May 17
7 - 8:30 p.m.

For adults
Free - donations welcome
Call to register.

Through conservation efforts, much of Costa Rica's biodiversity has been



protected through the establishment of public and private reserves. Tirimbina Rainforest Center owns a 950-acre rainforest reserve. The educational programs developed at Tirimbina help conserve the forest, encourage research and teach local and international students the importance of preserving this ecosystem.

BIG BIRD DAY IN MILWAUKEE COUNTY*

Thursday, May 18
8 a.m. - until we get tired
For adults
Free - donations welcome
Call to register.

No, not the yellow bird from Sesame Street! Help us count as many birds as we can find in one day. More than 250 bird species have been documented in Milwaukee (more than 160 in Riverside Park)! We'll visit birding hot spots until late afternoon. Bring a lunch.

ADULT BIRDING WORKSHOPS & WALKS

Thursday, May 25
6:30 - 8 p.m.
and Tuesday, June 27
7 - 8:30 p.m.

For adults
\$5 (Members - free)
Call to register.

May: Grosbeaks & Friends. They bring a ray of hope by singing during the darkest days of January. Come learn the natural history and a few identification secrets of cardinals, grosbeaks, buntings and towhees.

June: Sparrows. We will learn identification tips and some interesting sparrow facts.

INTRODUCTION TO RENEWABLE ENERGY SYSTEMS

Brought to you by We Energies, Midwest Renewable Energy Association and Focus on Energy
Tuesday, May 30
6 - 8:30 p.m.

For adults
\$15 per person, free for Energy for Tomorrow customers with letter from We Energies
Call to register.

Attention home and property owners! Come learn about renewable energy systems for the residential setting, including solar electric, solar hot water/solar thermal and small wind turbines. This program will provide an overview of systems and teach the "10 steps toward installing a renewable energy system."

SOLAR PV SYSTEMS FOR HOME OWNERS

Brought to you by We Energies, Midwest Renewable Energy Association and Focus on Energy
Thursday, June 1
6 - 8:30 p.m.

For adults
\$15 per person, free for Energy for Tomorrow customers with letter from We Energies
Call to register.

Discover the basics of solar photovoltaic (PV) technology and how to make solar PV work in Wisconsin. Learn how you can have a site assessment performed and the steps needed to install a renewable energy system.

"INSIDE THE FENCE" ART SHOW

June - August
Opening Show - June 4
2 - 4 p.m.
Free - donations welcome
Art available for sale
For adults
Call to register.

In 1942 the Badger Ammunition Plant was built on 7,000 acres of the Sauk Prairie. It has since been decommissioned and is being torn down. Over the course of two years, six photographers were given special permits to document and photograph the area. See this fascinating documentary of the process of nature reclaiming a toxic landscape.

TWENTY-FIVE STAGES OF BIRDWATCHING ADDICTION

Speaker:
John Feith, naturalist
Tuesday, June 13
7 p.m.
\$5 (Members - free)
Call to register.

John is a nature sound recordist and the author of the new DVD "Birds, Birds, Birds!" and "Bird Song Ear Training Guide." The presentation will include photos, videos and sound recordings of Wisconsin birds and cover the many ways people enjoy birdwatching.

NORTHWEST EARTH INSTITUTE COMES TO MILWAUKEE

Speaker:
David Sweet, Northwest Earth Institute

Thursday, June 15
6 p.m. Potluck
7 p.m. Lecture
Call to register.

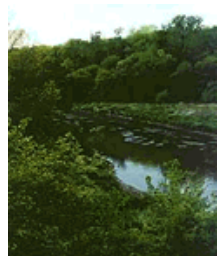
Hailing from the pacific northwest, David Sweet of the Northwest Earth Institute will discuss his work and how small changes can really save the earth. NWEI motivates individuals to examine and transform personal values and habits, to accept responsibility for the earth and to act on that commitment.

PROTECTING AND STEWARDING OUR STATE NATURAL AREAS

Tuesday, June 20
7 p.m.
For adults
\$3 (Members - free)
Call to register.

David Clutter, Natural Areas Coordinator, will provide a brief overview of the Natural Resources Foundation of Wisconsin

(NRF). Discover what and where are our state natural areas and learn about NRF's efforts to help steward some of the most biologically diverse areas.



VOLUNTEER OPPORTUNITIES

**URBAN ADVENTURES
VOLUNTEER TRAINING
SESSIONS***

Rock Climbing -
Monday, May 8
5:30 - 8 p.m.

Canoeing -
Monday May 15
5:30 - 8 p.m.

Kayaking -
Tuesday, June 6
5:30 - 8 p.m.

Must be 18 years or older
Fee: \$30 per adult OR Free
if you commit to volunteer
for at least 30 hours by the
end of August.

Call Dan, x115, to register
by May 1.

Want to help with
Urban Adventures?
Volunteers assist
by belaying rock
climbers, loading and
unloading canoes,
passing out equip-
ment, paddling with
younger participants,
and assisting with
kayak programs
on the river and on
Lake Michigan. All
adventures volunteers
must attend a volunteer
orientation and the
corresponding adventure
training(s).

**SNAKE SURVEYS***

Wednesdays, May 10, 24 &
June 7

6 - 7:30 p.m.

For adults &
accompanied children
\$5 (Members - free)
Call to register.

Riverside Park is one of the few
remaining areas where the State-
threatened Butler's Garter snake
thrives. Put on your scientist hat and
join us for a survey of the park's snake
community. Dress for the weather &
wear clothes that can get pooped on!

WEEDS AND WIENERS!*

Saturday, May 20
9 - 12 p.m.

For adults &
accompanied children
Call to register by May 17.

Garlic mustard, beware! As part
of the county-wide Weed-Out, the
UEC's Burdock Brigade will teach
us how to do what they do best: rid
Riverside Park of invasive spe-
cies to make room for more plant
diversity. After our work, we'll have
lunch from the grill. Weeding never
sounded like so much fun!

**DNR FROG &
TOAD SURVEY***

Monday, June 5
For adults and teens
8 p.m. - midnight

\$5 (Members - free)
Call to register.

Come out for a late night of frog-
gin' and help add to the Wisconsin
DNR's statewide database of frogs
and toads, run by citizen scientists
across the state. Dress for the
weather and wear footwear that can
get muddy. We will be covering
Western and Southern Milwaukee
County. Call Tim Vargo, x116, for
details.

SATURDAY STEWARDS

Every Saturday starting
June 3
9 - 10:30 a.m.

For all ages, children 14
and under must be accom-
panied by an adult
Call to register.

Kick-off your weekend by contrib-
uting your skills and energy to the
UEC and Riverside Park. On the 1st
and 3rd Saturdays you will work with
the Burdock Brigade to steward the
natural area. On the 2nd, 4th and 5th
Saturdays, you'll help with a variety
of indoor and outdoor projects. Indi-
viduals and small groups welcome.

BURDOCK BRIGADE*

Every Tuesday, 9 - 11 a.m.
& Saturdays, May, 6, 20 &
June 3, 17
9 - 10:30 a.m.

For adults and accompanied
children
Free

Improve biodiversity in the park by
removing alien plant species.

**VOLUNTEER
ORIENTATIONS**

Saturdays, May 13 &
June 10

10 a.m. - 12 noon
Thursdays, May 25 &
June 22

6:30 - 8 p.m.

Free

Call to register.

Learn about the Center's programs
and how to get involved.

NATURALIST WALKS*

Mondays, May 8 & 22

11 a.m. - 12 noon

For volunteers

Free

Call to register.

Join Center staff for an hour-long
walk through the park and adjacent
green spaces. Build your natural-
ist skills on these fun and informal
walks.

HIGH SCHOOL
PROGRAMS**CAVE EXPLORATIONS**

Saturday, June 17

8 a.m.

For high school students
\$10, scholarships avail-
able

Call to register by June
15.

Calling all high school students!
Join us for a day of exploration
throughout the caves of Ledge
View Nature Center. Learn about
the geology and ecology surround-
ing these fascinating formations.
Bring a lunch and clothes that you
can get dirty. Long pants, sleeves
and closed-toe shoes prevent cuts
and scrapes. The caves are dark,
so if you have a flashlight, bring
that too!!

COMMUNITY CONNECTIONS

*If you or your group have a program to share with others, give us a call and we'll
consider listing it in this section.*

VOLUNTEERS NEEDED

River Revitalization Foundation

Please call Arek at 277-7927 or Kimberly at 271-8000 for
more information.

Throughout the summer, River Revitalization Foundation (RRF) needs
volunteers to help remove invasive species (buckthorn, garlic mustard) on the
RRF property and along the west side of the river. They also need help plant-
ing trees starting April 27th and continuing for several weekends. RRF is also
looking for donations of trail building equipment and materials.

WIND TURBINE TOURS

We Energies

Saturday, May 13

5656 County Road F, Byron, WI

Guided tours begin every half hour between 9:30 a.m. and
12 p.m.

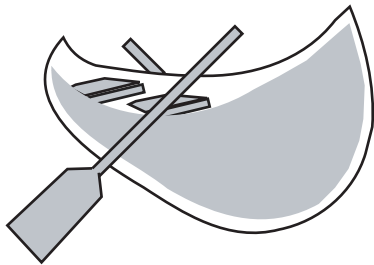
These two wind turbines feature 75-foot blades mounted on 215-foot steel
towers. Visitors will have an opportunity to enter the tower base and watch
the wind turbines shut down and restart.



IT'S FUNDAMENTAL

continued from page 1

I was delighted to find that from the orientation until our closing ceremony, I participated just like everybody else. Dan's approach was that we needed to learn everything about canoeing so we could do it on our own. I learned knots, how to tie a canoe onto a transport vehicle and how to drag the canoes from the truck to the put-in site at Lincoln Park.



I also learned all the strokes, sometimes with Christopher and sometimes with Dan's assistant, Kae Bosman-Clark. I always sat in the front and the other person would steer and direct me about which stroke to use.

When it was time for the maze test, I was ready to back out, not wanting Christopher to have the obstacle of telling me what to do. I'm so used to people saying "No, you can't," I got caught up in my own stereotype. But Dan would have none of it: "You two came together," he said. "You're a team. Christopher will tell you what to do."

Dan was hesitant, though, about having me jump in deep water as if we had fallen out and try to get in the canoe. He left the choice up to me. Part of me wanted to skip it, but I realized that like everybody else, I needed to do it. I did. I don't have strong arms, so it took me a couple of tries, but I got in. And that was Christopher's favorite part. "I liked learning how to capsize correctly without injuring anyone or losing any stuff," he said later.

Dan also showed us how to rescue people in a canoe turned upside down, which is quite cumbersome — you have to bring the other canoe perpendicular and slide it across yours. He and I were in a canoe together and, with his directions, we were able to rescue the other team and canoe.

The best moment was the closing ceremony. I was prepared not to get a Red Cross certification card. This was based on an experience my husband, who is also blind had, years ago. He took a lifesaving course and did everything required but was refused a card because of his blindness. But again I was pleasantly surprised; I got my canoeing certification card just like everybody else!

My sense always has been that the Urban Ecology Center is there for everybody — not because they have to but because they want to. They're invested in being inclusive. See page 7 to sign up for this year's class.

THANK YOU FROM THE CENTER

COMMUNITY PARTNERS

Beans & Barley,
Deli Market & Cafe
www.beansandbarley.com

Cambridge Woods
Neighborhood Association
www.cambridgewoods.org

The Jansen Group
www.jansengroup.com

La Lune
www.lalunecollection.com

Lake Park Friends
www.lakeparkfriends.org

Murray Hill
Neighborhood Association

Noodles and Company
www.noodles.com

Promotional Products
Association
www.ppapaw.org

Someone's in the Kitchen
lynerhyan@wi.rr.com

Trek Bicycle Corp
www.trekbikes.com

Wheel & Sprocket
www.wheelandsprocket.com

FOUNDATIONS / CORPORATIONS

Stackner Family Foundation
Robert W. Baird & Co.
Foundation

TEEN ADVENTURE CHALLENGE SPONSORS

Downtown Rotary
Harry & Mary Franke Idea Fund
The Jansen Group
Johnson Controls
Sigma Environmental Group

GIFTS IN MEMORY OF

Mr. McClland
- Jean Hudlett

DONORS

Therese & Peter Armbruster
Janet Aschauer
Diane Bacha
Judith S. Banzhaf
Roberta Bass
Stephen R. & Pamela S. Bednarczyk
Mary & James Bellore
Nicole Bickham
Eileen J. Blanchard
Rick Brudny & Angela Iorio-Brudny
Sandy Bruss
J. Gerard Capell
John & Julie Carpenter
Kevin A. Carr
Mary Carson
Dennis & Jean Casper
Annemarie Chapdelaine
George & Rikki Clark
Arlene Clowers
Rachel & David Collins
Christine & Donald R. Cotey
Jim & Katrina Cox
Maureen Devine D'Souza
Don & Sallie O. Davis
Alice & Jerry Davis
Mark & Kathleen Davis
John DePoy & Marian J. Singer

Monica Dignam & Alan Balkema
Julie Dunn
Mary Dunsmore
Laura & Dan Eder
Sally Edgett
Kimberly & Simie Fein
Margot Fuchs
Jeanne Gaenslen
David & Carla Garnham
Paul & Patricia Geenen
Lori Gendelman
Donald & Barbara Gilmore, Jr.
Pieter & Jeanne Godfrey
Anne & Lawrence H. Golding
Elaine B. Gordon
Dr. Gerard W. & Laura J. Graham
Dennis Grzeziński & Jane Porath
Helga & Denis Guequierre
John Gurda & Sonja Nelson-Gurda
Ronald Gutschow
Kay & Clay Hahn
G. Michael & Melissa Halfenger
Vickie Hall
Philip & Connie Hardacre
Ellen & Todd Hayward
Carole Hoefs
Scott Holan
Seth & Patrick House & Abbie Fishman
Jean M. Hudlett
Judith Huf
Ceal & Tim Hunter
Gerald & Barbara Hussin
Karen Johnson & James Toth
Laurie & Brian Joiner
Maureen M. Kane
Ken Kaszubowski
Kevin P. & Andrea C. Kenealey
Deborah Kern
Judy Knight & Al Rank
Rollie & Judith Kohl
Carrie & Rick Kohloff
Mary Krawczyk
The Kubala Washatko Architects, Inc.
Sarah & Michael Kubly
Harvey Kurtz & Yvonne Larne
David & Sharon Lerman
Susan Leslie & Morales Family
Phyllis Levy
James L. & Judith I. Lewis
The Lindfors Family
Mark & Barbara Lucius
Jill & Pat Marger
Rose Mary & Francis W. Matusinec
Dan & Maribeth McNally
Mark & Barbara Mendelson
Diane Meredith & William Lipscomb & Family
Joyce & Brian Miller
Patricia H. & George N. Mueller
Henry Musto & Mary Ellen Shea
Eileen Nyholt
Jennifer & Michael O'Hear
Patricia & Veronica O'Neill
Robert P. Oberheide
David J. & Ann E. Pasternski
Susan Han & William Paul
Jeanette Peltier
Jessica Peltonen
Blaine D. & Andrea M. Peters
Mark Pfaltzgraff & Tracy Wilkins
Joell Poole
Mary & Al Porath
Gail Povey
The Primack Family
David Pritchard & Kathy Rogers
Philip Pyne & Debra Olsen-Pyne

Allen & Pat Rieselbach
Mary Ross
Lorette Russenberger
Stephanie Sandy & Allan Montezon
Bob & Cato Schley
Julie & Tim Schneider
Michael R. Schultz
Carl & Barbara Schwartz
Kurt & Anne Sechtig
Margaret & Andy Slupecki
Mark M. & Susan E. Stecker
Jason E. Steigman
Jane Stoltz & John Idzikowski
Pat Sturgis & Patty Garrigan
Melissa & Roger Sweaney
B.D. Thompson & E.A. Silver
Catherine Tietz
Beth Treptow & Family
Dorothy K. Vallier
Mary Vandenberg & Keith Mardak
Cheryl Wagner
Elizabeth Warner
Allen Washatko
David Waters & Ann Brummitt
George & Sally Wells
Mark & Sandy West
Anna C. & Eric H. Westfall
Pat & Harvey Wilmeth
Jessica Wirth
Joseph & Margene Woida
Mary Jo Zimmer
Gordon H. Zion

IN-KIND DONATIONS

Alterra Coffee Roasters - bakery for NEEP program, coffee, Bike to Work Week goodies
Hoffers Tropic Life Pets - live & packaged animal food
CyberLynk Network - web hosting
Jeff Anderson - books
Melanie Ariens - books
Cathy Blaski - snow pants, tea
Regi Bron - cd player & speakers
Mark & Linda Carlson - stethoscope
Gary Casper - lumber
Chiropractic Care Centers - copy machine
Vivian Corres - cooler
Judith Daitzman - rock collection
Rose Daitzman - books, poster
Girl Scout Troop 24 - mittens, boots, pants
Joanne Kline - canoe
Carol Johnson - books
Leslie Davis Preservation Framing - painting restoration
Jim Maurer - books
Pat Mueller - book
Milwaukee Public Museum - natural history materials (rocks, minerals, skeletons, landforms and models)
Katherine Murray - air pump, tank & supplies
Tom Nelson - fire gloves, fire starters & firewood bag
A. Jim Palasz - cross country skis & poles
Ann Powell - kite
Erv Russell - handmade jewelry
Sandy Schmitz - mat board & craft materials
Shapiro family - hats, gloves, stopwatches, seeds, markers & buckets
Cynthia Sommer - cross country ski boots
Brian Torreano - native fish
Gordon Zion - book

JOIN OUR COMMUNITY TODAY!

MEMBERSHIP

Membership benefits include discounts on programs, invitations to members only events, the ability to borrow our equipment, a one year newsletter subscription and more.

For information, visit our website at www.UrbanEcologyCenter.org.

Choose one:

- Individual (\$25) includes guest
- Family (\$35)
- Student (\$12)

Financial assistance is available. Please call Ginger Duiven, Membership Coordinator at x106 or gduiven@urbanecologycenter.org for details.

DONATION (IN ADDITION TO MEMBERSHIP)

Please accept my gift to support:

- A community program (\$50)
- One half day for a school class (\$125)
- One full day for a school class (\$250)
- A Citizen Science project (\$500)
- Improved Riverside Park trails (\$1,000)
- A school for one year (\$3,000)
- Other \$ _____

Total Enclosed \$ _____

Name _____

Address _____

City _____

State/Zip _____

Phone _____

Email _____

I would like to volunteer. Please call me.

Charge my membership to: Master Card Visa

Card Number _____ - _____ - _____ - _____

Expiration Date ____/____

Signature _____

Date _____

Please make your check payable to:

Urban Ecology Center and return it with this form to:



Riverside Park, 1500 E. Park Place
Milwaukee, Wisconsin 53211
www.UrbanEcologyCenter.org



High School Outdoor Leadership Program is now accepting applications! Join us in Wyoming!

Teen Adventure Challenge June 3, 2006

SUMMER IS FUN FOR TEENS AT UEC!



Riverside Park
1500 E. Park Place
Milwaukee, WI 53211



Non-Profit Org.
U.S. Postage
PAID
Milwaukee, WI.
Permit
No. 5190