



NEW "GREEN PRODUCT" LIBRARY TO BE HOUSED AT THE CENTER

by Ken Leinbach, Executive Director

Ignorance really is bliss. It used to be so easy. To paint my living room, insulate my attic or carpet my kid's bedroom, I would simply go to the hardware store and get the best product recommended by the sales person within my price range. This was when the only filters for my decisions were price, performance and look. Now I'm cursed with too much information!

To do the right thing for the environment is good in concept but very hard to implement. If you go to a vendor and ask about the recycled content, embodied energy or VOC level of their product*, they either have no idea what you are talking about, have no easy way of figuring it out or add a premium to the cost because of the green attribute. For those who care about this type of thing (and we hope this will soon be everyone on the planet), wouldn't it be nice to have a place to get the information needed, see and touch sample products, read or hear testimonials, compare prices and get suggestion for vendors and installers? Soon such a place will exist at our very own neighborhood Urban Ecology Center!

This sustainable library is the brainchild of Lyn Falk, founder of Solterra Studios. Lyn is an amazing woman. In her work as an

interior designer she dedicated the past ten years of her life to creating what perhaps is the most extensive "green products" library in the country. Her passion and drive overwhelm even me! As she finds her time switching away from sales and into consulting, her sustainable exhibit/library needs a new home and public venue. Over the past three months a team from the Urban Ecology Center has been meeting with Lyn on the logistics, costs and maintenance of this donation. In the process much excitement has been generated from the community. Outpost Natural Foods, Pragmatic Construction, Wisconsin Green Building Alliance and Green Built Homes, along with Solterra Studios, have all pledged time and resources to make this project work. The end result will be a resource for you!

When you walk into the Center there will be an attractive exhibit of alternative materials and products that you can see, touch and smell, along with the raw material from which they are made. A pair of old jeans will be next to the insulation made from denim. A bowl of flax seeds and a photo of the flax plant will help explain where linoleum floor comes from. The exhibit will be discretely placed against a wall leading towards the elevator, a teaser to get people downstairs. In the community

Continued on page 3

GROW ROOTS QUICKLY

by Beth Fetterley, Director of Education

This January I experienced the Ecology Center's trip to Costa Rica. It was fantastic not only because of the warm weather, rare wildlife, lush rainforests and ocean-side relaxation, but because the group traveling together was fascinating. I built friendships throughout the group, but I was especially excited to experience the trip with a well known figure at the Ecology Center, Else Ankel.



While Else humbly underplays her leadership role, she is often referred to as the founder of the Urban Ecology Center. Asked directly, Else explains "one of the neighbors thought that maybe we should have a nature center at Riverside Park, and I thought

Continued on page 4

GETTING HIGH WHILE VOLUNTEERING

by Cheri Briscoe, Volunteer Teacher and Advisory Council Member

While "soaring" home one sunny fall day after doing my teaching assistant volunteer work, I thought...I really must share this joy. On that particular day we were exploring "nature's jigsaw". Children were excitedly finding different species of insects in a rotting old log and discussing their adaptations and how they interacted with the log, each other and the surrounding vegetation. The students drew pictures of their finds on puzzle pieces. Then they put their puzzle pieces together and discussed their interconnections. Watching them work cooperatively to construct their puzzle and share ideas on ecological connections gave me real hope for the future of our planet Earth.

I signed up as a volunteer assistant teacher four years ago. I had recently retired and wanted an opportunity to work with children and an excuse to get out into nature. Little did I know of all the perks I was going to get out of it. For a starter I had the pleasure of observing the talented and committed UEC staff demonstrate not only their knowledge of nature and science, but also their gentle class management style which makes each

Continued on page 4



URBAN ECOLOGY CENTER

River Reflections is created and distributed through a team effort by the following people: McDill Design, Carijean Buhk, Judy Krause, Pat Mueller, Shirley Spelt and a volunteer mailing crew.

Contributing writers: Janine Arseneau, Tory Bahe, Cheri Briscoe, Beth Fetterley, Ken Leinbach, Lorraine Jacobs, Art Paque and Susan Winans.

River Reflections is a publication of the **Urban Ecology Center**. The facility and programming are made possible through the generous annual contributions of 41 foundations and corporations, over 1500 member families and 110 in-kind donors. **No tax dollars are used to operate the Urban Ecology Center.**

To make a contribution, please see page 12 for the easy to use form or call Ginger Duiven, at x106.

The **Urban Ecology Center** is a neighborhood-based, nonprofit community center located in Milwaukee's historic Riverside Park. Using this living laboratory, the **Urban Ecology Center**: Provides environmental education programs to neighborhood schools, **Promotes** environmental awareness in the community, **Preserves** and enhances the natural resources of Riverside Park, and **Protects** the Milwaukee River.

Urban Ecology Center

Riverside Park, 1500 E. Park Place
Milwaukee, Wisconsin 53211

(414) 964-8505

Fax: (414) 964-1084

uec@urbanecologycenter.org

www.UrbanEcologyCenter.org

Hours of operation:

Monday - Thursday: 9 a.m. - 7 p.m.

Friday & Saturday: 9 a.m. - 5 p.m.

Sunday: 12 noon - 5 p.m.

DROPLETS

- Our **School Program** is growing! The Center is in the final phase of expanding our school program. We are recruiting 11 more schools, bringing the total to 33 school contracts. Contact Beth Fetterley at x103 if you are connected to a school located within two miles of the Center that may be interested in participating.
- Calling all adventurous teens!** Do you know a high school student who is interested in leadership, exploration, science and adventure? Check out our High School Outdoor Leader Program. Log onto www.urbanecologycenter.org and click on the "High School Outdoor Leader" link for information or call Sara Vondrachek at x111.
- Ken Leinbach is a River Hero.** UEC's Executive Director was given the 2005 River Hero from Friends of Milwaukee's Rivers for encouraging collaboration between our two organizations. Together we work with high school students studying the wildlife along the river corridor, train volunteers in the identification of crayfish living in the rivers and much more. Learn about the Friends of Milwaukee's Rivers at www.mkeriverkeeper.org.
- Prize donations needed.** The Teen Adventure Challenge is a team adventure race that explores the urban wilderness found along the Milwaukee River from Riverside to Pere Marquette parks. After navigating an exciting course, participants are cheered to the finish line and are given lunch. Top teams are awarded prizes at a special awards ceremony at RiverSplash! in Pere Marquette Park. Do you own or know of a business that would be interested in donating prizes in a set of five (one per winning team member)? Past prizes have included outdoor gear and movie passes. Call Dan Gray at x115 for details.
- Come see our bronze owl in our second floor lobby!** Many thanks to John and Rita Czukas for this donation.
- Did you know that the Center offers kids' nature-themed birthday parties?** Contact Sarah Rohe at x114 for more information or to schedule a party!

WISH LIST

If you have a donation for the Center, please call Judy Krause, x102.

Children's gloves or mittens
Firewood
\$60,000 for two vans
Gently used sweatpants
Heavy duty cordless drill & screwdriver w/charger
Laminator
Large copy machine
Skewers for roasting marshmallows
Portable sound system with microphones
Table top letter folder
Step stools
Stopwatches
Winter boots (children's sizes)
Winter jackets (school age children's sizes)

Don't throw away that old computer! New Horizons Un-Limited, a Milwaukee based non-profit organization, offers a community-friendly option for the "disposal" of Pentium II or better PCs and G3 or better Macs by refurbishing and distributing them free of charge to persons with disabilities. To arrange your donation, call (414) 299-0124 or visit us at www.newhorizons.org/accesstech.

Tired of junk mail you receive? Contact the Mail Preference Service of the Direct Marketing Association at (212) 790-1500 to request that your name be placed on a "name removal file" or register online: www.dmaconsumers.org/offmailinglist.html. Registration lasts five years but it is limited to companies that use DMA's list. Expect a reduction in junk mail three months after registering. Contact other companies directly and ask to be put on their "inhouse suppress list."

Milwaukee's newest Household Hazardous Waste (HHW) Facility is open! The area's third HHW facility is located at the Self-Help Center at 3879 W. Lincoln Avenue. The facility is a "one-stop shop" where residents can dispose of all wastes ranging from trash, recyclables, HHW, appliances, yard waste, furniture, used motor oil and tires. HHW service is available to all Milwaukee County residents.

FROM THE BOARD

by Lorraine Jacobs, President, UEC Board of Directors

The new year brought procedural changes to the manner in which our Board of Directors conducts business.

We began the process by simply asking our current Board some questions. Upon hearing the answers it became clear that Board Members desired meetings that were factual, efficient and educational. They wanted to gain a deeper understanding of the Urban Ecology Center programs, staff and mission. They wanted to get to know each other in order to enhance teamwork. Finally, they were available to meet monthly, rather than bi-monthly. The Executive Committee moved quickly to act upon this exciting energy. As of January, the Board of Directors meets monthly, the second Tuesday of the month, from 4:30 - 6 p.m. Board meetings are open to the public.

We have implemented the use of a "Dashboard", also known as a Performance Scorecard. A sub-committee, including staff, has worked on the development of this tool for many months. The Dashboard provides the Board and staff a "continuous and visual representation of some measures of ongoing performance." Key elements of our operation

are measured monthly and displayed on a chart offering color coded status indicators. A deeper knowledge base for all of our operation is continually provided to the Board and staff through written and verbal reports, but the Dashboard allows for efficient and timely attention to troublesome areas. Meetings are scheduled to ensure a business portion and an educational/Board development session each month.

In January, Ginger Duiven, Development Manager, provided an overview of the development status and plan for the current year. Opportunities for individual Board members to become involved in the fundraising goals for the Center became evident as we heard about the challenges and success of our development "world".

The Board of Directors are incredibly talented, dedicated people. They represent the many communities surrounding the Center: businesses, neighbors, educators. We continually focus on building the membership to maintain an overall representative group. If you ever have questions about the Board of Directors, please contact Lorraine Jacobs at jacobslm@sbcglobal.net.

VOLUNTEER CORNER

by Susan Winans, Volunteer Coordinator

Support CSAs!

Volunteers are needed to greet visitors, provide childcare, man tables and serve food during our Community Supported Agriculture open house on Saturday, March 25th. We also need people to distribute fliers prior to the event and setup and clean up help the day of the event. Please call Ginger Lee at x112 to volunteer.

Good with a compass?

Share your orienteering knowledge during our Girl Scout program on Saturday, March 18th. Sign up for the morning, afternoon, or all day. Call Sarah Rohe for more information, x114.

Earth Day!

Join us to clean up Riverside Park on April 22nd beginning at 9 a.m. Stay in the afternoon to celebrate our natural world during our Earth Day celebration. Call Sarah Rohe at x114 for information.

Piano tuner needed

Call Beth Fetterley at x103 for information.

NEW "GREEN PRODUCT" LIBRARY...

continued from page 1

room we'll have an entire wall near the fireplace transformed into this one-of-a-kind resource.

The exhibit will educate the uninformed while the library will provide in-depth information to those already initiated to the concept of eco-friendly design. Contact information for product sources and service providers will be available and a wireless laptop can be checked out to obtain up-to-the-minute information from the internet. The library will also reference products and materials used throughout the entire building. If a person is considering a bamboo floor for example, the visitor will be directed to our fourth floor mezzanine to see one

installed and in use, complete with a sheet about its pros, cons, installation and costs. Materials will be screened and rated based upon such things as their manufacturing process (B= Benign, T= Toxic Elements, FTC = Fair Trade Co), maintenance (E= Easy) and life cycle (how to dispose of at end of useful life).

While the installation of this exhibit/library will not happen overnight and the information is likely to grow over time, we hope to have a good portion of it available to the public this spring, ideally by Earth Day! If anyone is interested in helping with the installation, research and maintenance of this exciting project, please call Judy Krause at x102.

*Explanation of terms

Recycled content: percent of recycled material used in the product.

Embodied energy: Total energy used in product creation from extracting raw material, fabrication process and transportation.

VOC: Volatile Organic Compounds which break down and release chemicals, called "off-gassing", from the product into the air.

ROOTS GROW QUICKLY

continued from page 1

it was a good idea.” As she describes the Center’s early leadership, every other topic is about other people: Pat Mueller, Susie Kasten, Deb McRae, Lorraine Jacobs, Margarete Harvey, just to name a few.

Else, born in Germany, spent every Sunday of her childhood on 10 to 12 hour long hiking excursions with her family in the Black Forest. She completed her PhD at the University of Basel in Switzerland and then traveled to Ottawa, Canada, for a fellowship. There she not only pursued her specialty of biochemist, but also learned English and met her husband. Both Else and her husband, Helmut, ended up in Milwaukee working for the Medical College of Wisconsin.

Not one to dally, Else gave birth to her third child five days after her arrival in Milwaukee. Immediately, she became involved in the community because, as the botanist in her states, she likes to “grow roots quickly.” For example, in the 1960s the Ankel basement served as a springboard for a volunteer-led neighborhood child care program that grew to nearly 100 children and developed into a collaborative effort with UWM’s School of Education. With the exception of a three year sabbatical in France in the early 1970s, Else has been deeply rooted in the community ever since.

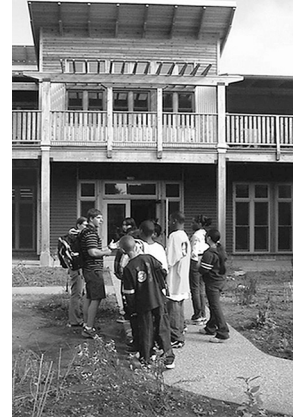
Else became involved with the Center at its formation in the early 1990s when she was a Scientist in Residence at Riverside University High School. A joint city and county commission was trying to figure out what to do with crime laden Riverside Park and Else showed up for the community meetings. At an early meeting in Else’s living room on Bartlett Avenue, a small team of neighbors decided they should become legitimate and incorporate. They pooled their \$10 bills in order to pay the fee and collectively said “let’s see what we can do for the neighborhood.” Thus began “Friends of Riverside Park,” which later became the Riverside Urban Environmental Center. Although she attained a teaching certificate following her retirement from the medical college, Else felt that she did not know enough about running a nature center. She elicited help from neighbors and befriended Deb McRae, Director of Wehr Nature Center. Our first educators were volunteers from McRae’s Nature in the Parks program.

Else’s approach to everything—travel, moving to new locations, getting to know the neighbors, “growing roots” — is that it is all a grand adventure. As we hiked through the rainforest canopy, kayaked the mangroves and sipped wine while looking out over the ocean with Else, I was inspired to approach life with her same kind of zeal.

GETTING HIGH WHILE VOLUNTEERING

continued from page 1

and every child feel OK about his/her contributions in their inquiry based discussions. What a joy it is to see these inspiring staff role models at the UEC.



My interest in nature has been further stimulated as I have learned about the science of our ecology while participating in these classes. New bits of knowledge are such fun to acquire when coupled with the bubbling enthusiasm of children. Additionally, I have had opportunities to attend wonderful classes and tours as part of the UEC’s program for volunteer teachers, along with delightful brown bag lunches with staff where ideas and nature knowledge is shared freely.

If you are looking for a new volunteer adventure for 2006, try out the UEC teaching assistant volunteer program. It’s got a lot going for it!

FAST FOOD NATURE HIKE

by Tory Bahe, Environmental Educator

Visualize a group of seven- and eight-year-olds hiking in the woods—energetic, active kids scrambling to find a leaf from a tree they’d learned about. These were my students from Clarke Street School and they were ecstatic to be outside on such a warm winter day. They might have continued their noisy search if one student hadn’t interrupted with “Shhhh! I heard a bird!”

Instantly, ten second graders froze in their tracks and listened expectantly. After a few silent moments, the girl who heard the bird looked up at me with wide eyes and whispered, “What was it, Miss Tory? Was it a chip bird?”

I confessed that I hadn’t heard it and suggested the whole group keep listening. A few moments later, a bird called in the distance. Several faces lit up, one student gasped, and a boy exclaimed, “I think I heard a hamburger!”

Although it may seem that these kids’ minds were on their upcoming lunch instead of their hike, they were actually quite focused on what was around them. Even though it had been almost six months since we last hiked together, these seven-year-olds remembered learning that the chickadee’s two-note call sounds a bit like “cheeseburger.” On that

spring hike, we also watched goldfinches fluttering through the air as if they were on roller coasters and listened to them call “Potato chip! Potato chip!”

Whether it’s a snake or a slug or footprints in the snow that lead us away from the lesson we’ve been focused on, I’m always delighted when my students find something in the woods they can get excited about. Even if they didn’t get the details quite right, the joy I saw on their faces in that moment convinced me that to this group, chips and hamburgers will always be more just fast food.

ASTRONOMY NOTES

by Art Paque, community volunteer

Spring is around the corner and, with luck, clear skies! March is the month to spy on Saturn, high and bright (magnitude 0) in the southeast after dark. Use binoculars to see Saturn's companion, the Beehive Cluster (M44), more easily. Don't miss the coupling of the Moon and the Pleiades on April 1st.

March mornings will present Venus, dazzling at -4.5, in the southeast and Jupiter, bright at -2.2 in the southwest. Evening viewers will find Mars high in the west growing dimmer at 0.9. Saturn will be well up in the southeast.

MARCH

After dark until the Moon sets at 1 a.m. on March 5th look for Mars (0.9) 2° to left of the Moon and Pleiades (M45) (1.4) 4° below. On the 10th, find Saturn 5° below Moon with the Beehive Cluster (M44) between them. Look after dark until Saturn sets 4:25 a.m. Spica (1.0) will be found 1° below the Moon on the 16th. They'll be close to touching by 5 a.m. Find Jupiter 5° from the Moon throughout the night on the 18th. The Vernal Equinox, March 20th, marks the beginning of astronomical spring. Look for Antares (1.0) 2° above the Moon 12:30 a.m. until daylight on the 21st. On the 27th, you'll find Mercury (1.1) 2° left of the Moon soon after moonrise.

Full Moon (Worm/Crow/Crust/Sap/Snow Blind) is on 14th. Be sure to check out the Penumbral lunar eclipse. Look for a slight shading of the Moon's lower edge

from moonrise (5:51 p.m.) until 6:45 p.m. New Moon is on the 29th.

APRIL

April mornings will be graced by Venus and Mercury low in the southeast and Jupiter preparing to set in the southwest. Evening skies will again show Saturn and Mars in the southwest and west respectively, joined by Jupiter, in the southeast, later in the evening.

On April 1st look for a partial occultation of Pleiades (M45) by the Crescent Moon. You'll find this after dark until setting (near 10:30 p.m.). Daylight Saving Time starts on the 2nd. On the 3rd find Mars (1.2) 3° below the Moon from when it gets dark until Mars sets. Find Saturn (0.2) 3° below the Moon on the 6th. On the 14th you can find Jupiter (-2.5) 5° from the Moon.

Antares (1.0) will be found almost touching the Moon on the 16th from 11:30 p.m. until daylight. Get out your binoculars on the 18th and look for Venus (-4.2) and Uranus (5.9) nearly touching as they rise. Watch for the Lyrid meteor shower on the 23rd. Expect 10 – 20 per hour all night. At 12:30 watch in east 45° up; by 3:30 a.m. watch very high in southeast. Find Venus 2° from the Moon early on the 24th. On 26th find Mercury (-0.2) 4° from the Moon at 5:30 a.m.

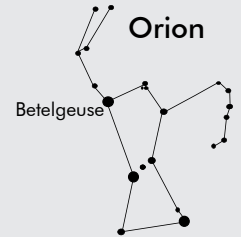
Full Moon (Pink/Egg/Red Grass Appearing/Frog) is on the 13th New Moon is on the 27th.

BETELGEUSE

Betelgeuse (pronounced BET-el-jooz) is in the constellation of Orion. Betelgeuse, a reddish gold color, is the left shoulder of Orion "The Hunter".

Orion will be half-way up in the southwest sky at 8:30 p.m.

on March 10th. It will move West and lower in the sky as the evening progresses. It is currently about 0.4 magnitude.



Betelgeuse is a red giant variable star; its magnitude varies from 0.2 to 1.2 in cycles lasting up to 6 years. This huge star has a radius 600 times that of our Sun and shines 60,000 times as bright. Betelgeuse is estimated to be 425 light years away.

Betelgeuse's name is derived from a corruption of the Arabic "yad al jauza" or the "hand of al-jauza", meaning, in turn, the ancient Arabs' "Central One".

COMMUNITY GARDENING ALONG THE BIKEPATH

by Janine Arseneau, community volunteer

The people who gathered at our first meeting to learn more about having an Urban Ecology Center community garden plot came for different reasons. They came because they didn't have space for a garden. They came to try something new. They came to plant flowers.



But then came the reason that put everything in perspective: "I need food." It

was said in this direct manner by people who are diabetic and need fresh fruits and vegetables but can't afford to buy organic produce. It wasn't a hobby for them; it was about their health, their lives.

In an urban setting fresh, organically grown produce can be expensive and hard to find. These gardens can help fill an important need and connect people back to the land.

Community gardens consist of raised bed

garden plots, 10'x10', (may be increased to 15'x10' by the beginning of the season). Each plot cost \$75 (Members - \$35) per growing season (additional plots \$20). The soil is excellent and water is readily available. Pesticide use is prohibited. UW Extension will provide technical assistance but gardeners are responsible for tending and maintaining plots throughout the growing season.

To learn more or to join in this opportunity to grow with us, please contact Kathy Palmer at x152.

MARCH THROUGH APRIL CALENDAR OF PROGRAMS

Unless otherwise indicated, participants meet at the Urban Ecology Center, 1500 E. Park Place. Scholarships are available for all fee based programs. For general information call (414) 964-8505 or visit www.UrbanEcologyCenter.org Programs marked with an * are not accessible for persons with physical disabilities. All others have limited accessibility.

SPECIAL EVENTS



EARTH DAY FESTIVAL AT UEC!

Saturday, April 22

12 noon - 4 p.m.

Free for all ages

Join us in Riverside Park for:

Music	Hay Sledding	Community Garden Sign Up
Rock Climbing	Carriage Rides	Bike Safety Inspections
Nature Hikes	Crafts	Resource Booths

Morning Events:

9 a.m. - 12 noon

KIWANIS CLUB'S RIVER CLEAN-UP

Help out at the 23rd anniversary of the Kiwanis Club's River Clean-up. Contact Keep Greater Milwaukee Beautiful at www.kgmb.org or 272-5462 to register. Walk-ins are welcome, but registration helps us plan for gloves trash bags and snacks.

9:30 a.m. - 12 noon

ANNUAL RIVER TO LAKE HIKE

Join Ecology Center Director of Education Beth Fetterley on our traditional 4-mile hike from Riverside Park to the lakefront. Enjoy the beauty of two of Milwaukee's park gems and learn natural history along the way.

10 a.m.

RIVERWEST TRAIL RUN

The first ever Riverwest Trail Run along the Milwaukee River will benefit the Urban Ecology Center. **Registration opens at 8 a.m.** Pre-registration is strongly encouraged. You can download the registration form at www.troyfreund.com/RiverWestTrailRun For more information call Troy Freund, (414) 483-7723.

ALDO LEOPOLD WEEKEND

Land Stewardship Service Project

Saturday, March 4

9 - 10:30 a.m.

Reading of *A Sand County Almanac*

Saturday, March 4, 10 a.m. - 4 p.m.
& Sunday, March 5, 1 - 4 p.m.

If you are interested in reading an excerpt during the weekend, please contact Sara Vondrachek at x111.

Gather with family and friends to hear community members read aloud from Aldo Leopold's *A Sand County Almanac*. Bring your children and inspire the next generation of environmentalists. The reading will be continuous throughout the weekend.

3RD ANNUAL CSA OPEN HOUSE & SEASONAL FOOD TASTING

Co-sponsored by the Milwaukee CSA Initiative, Slow Foods Wisconsin South East and MATC

Saturday, March 25

12 noon - 4 p.m.

For all ages

Free - donations welcome

Call to register.

Learn how to get a weekly delivery of fresh, local food grown without pesticides and meet the farmers that provide this great service. This event features samples of the farmers' products prepared by MATC culinary students, information on cooking and food preservation and kids' activities. Enter the raffle to win \$350 toward a CSA share.

THE FIND OF A LIFETIME: REDISCOVERING THE IVORY-BILLED WOODPECKER

Speaker: Dr. Mindy LaBranche

Tuesday, April 18

7 - 8:30 p.m.

For adults

\$5 (Members - free)

Call to register.

On the morning of April 10th, 2004, I fidgeted in a chair sunk into cypress-swamp muck in eastern Arkansas. This was arguably THE spot to be—two sightings of Ivory-billed Woodpeckers in the past week. Light, steady rain started falling so I returned the video camera to its case. My waterproof binoculars hung around my neck...the rest is history. Come hear a first-person account of an ornithologist's dream come true.

URBAN ADVENTURES

Call the Center at (414) 964-8505 to register at least two days before the trip. Trips run as scheduled, rain or shine.

MILWAUKEE RIVER EAST BANK TRAIL INFORMATION SESSION & HIKE*

Saturday, March 25

9, 10 and 11 am

For adults

Free

Call to register.

This spring River Revitalization Foundation is building a trail from Caesar's Park to Riverside Park.

Learn about this effort to improve public access to the river. Enjoy a hike along the East Bank, see where the trail will be built, learn how you can get involved. Hikes will begin at the Center on the hour at 9, 10 and 11 a.m. Stay around afterwards for the Community Supported Agriculture open house!

MILWAUKEE RIVER HISTORY HIKE II*

Saturday, April 8

9 a.m. - 12:30 p.m.

For adults and accompanied children 12 & up

\$8 (Members - \$5)

Payment due at time of registration.

Call to register.

Get in touch with the early spring river and its banks as we learn some of the history of the river north of Capitol Drive! Meet at the south parking lot on the Milwaukee River Boulevard in Estabrook Park (just north of Capitol). We will hike both sides of the river, exploring the Estabrook Dam and changes in the river in that area. After the hike, those who would like can go to lunch at Riverbrook restaurant. Total length about 4 miles. Bring water and money for lunch. Wear boots and expect mud.



BIRDING BY CANOE*

Saturday, April 29

8 a.m. - 3 p.m.

For adults

Limited to 8 canoes

\$25 (Members - \$20)

Payment due at time of registration

Call to register
by Tuesday, April 25.

Get out on the water with Research Coordinator Tim Vargo and Urban Adventures Coordinator Dan Gray as we search for beautiful spring migrants like warblers, vireos and tanagers. Birders of all experience levels are welcome. Bird books and binoculars are available for use. Bring a lunch and water. Canoes, paddles and PFDs provided.

GIRLS' NIGHT OUT(DOORS) WOMEN'S ADVENTURE GROUP

Thursday, March 16

7 - 8:30 p.m.

\$5

Thursday, April 28

5 p.m.

\$20

Call to register.

Let's face it: Girls just wanna have fun... outdoors! Join other women for outdoor adventure!

March: Join other like-minded gals for a glass of wine and a planning session. Learn about upcoming activities, including rock climbing, kayaking, camping and hiking. Dress for a winter night hike in Riverside Park. Bring your calendars to help plan an additional outing in the coming weeks!

April: Join us for an evening of rock climbing or canoeing (depending on the weather), followed by dinner. Activity and dinner plans to be determined at the March planning meeting.

URBAN ECOLOGY CENTER TOURS

WEDNESDAY WALKS WITH KEN*

Every Wednesday

9 a.m. - Urban Ecology
Center building

10 a.m. - Riverside Park

For adults and
accompanied children

Free - donations welcome

Call ahead to confirm.

Explore Riverside Park and/or our green facility with our Executive Director, Ken Leinbach.

ECOLOGY CENTER TOURS

Every Wednesday

5:30 p.m.

For adults and
accompanied children

Free - donations welcome
Call ahead to confirm.

Explore our green facility with our Director of Education Beth Fetterley.

HIGH SCHOOL PROGRAMS

SOUTHERN KETTLE HIKING TRIP

Saturday, April 1

9:30 am - 5 pm

For high school students

\$10, scholarships available

Call to register.

Hey, outdoor leaders of the past, present and future! Come join us for a hike or snowshoe (snow permitting) in the beautiful Kettle Moraine. There will be some snacks and hot chocolate to enjoy at the end of our hike.

RIVER CLEAN UP BY CANOE

Saturday, April 22

9 a.m. - 12 noon

For high school youth

Free

Call to register.

Take part in Friends of Milwaukee's Rivers annual Spring River Clean Up. We will use canoes to get to sections of the river and river bank that are hard to clean up from shore. It is a fun way to serve the community and the river.



FAMILY PROGRAMS

**MAPLE SUGARING IN RIVERSIDE PARK**

Sundays, March 5 & 19
12:30 - 2:30 p.m.

Adults: \$8 (Members - \$5) for both days; \$5 (Members - \$3) for one day

Children: \$6 (Member - \$3) for both days; \$4 (Members \$2) for one day

A maximum of \$15 will be charged per family

Call to register.

Take part in the ancient practice of collecting and boiling down maple sap into maple syrup. On the 5th we will tap trees in the park. On the 19th we will boil down the sap into syrup. Yum!

STORYTIME IN THE PARK

Sundays, March 12 & April 9

1 - 2 p.m.

For preschool - 2nd graders accompanied by an adult \$5 (Members - \$3) per child

Families of 4 or more: \$20 (Members - \$12)

Call to register.

Listen to nature stories and meet animal friends in our classroom or look for new friends in the park!

**FRIDAY FIRE**

Fridays, March 17
& April 21

7 p.m. For younger audiences

7:45 p.m. Popcorn and S'mores

8:15 p.m. For all ages

\$5 per person or \$10 a family (Members - free)

Call to register.

March: John Stano, who wears many hats, shines on guitar, harmonica and a mean kazoo. He is adept at blues fingerstyle and many flavors of American music, including jug band!

April: Earth Poets & Musicians. Join Jahmes Tony Finlayson, Louisa Gallas, Holly Haebig, Suzanne Rosenblatt, Sue Silvermarie, Harvey Taylor and special guest Eric Hansen for the 19th Annual Earth Day performance.

ENERGY CYCLE

Saturday, March 18

2 - 4 p.m.

For children ages 8 & up

\$8 (Members - \$5)

Call to register.

What is energy? Where does it come from? Come learn about energy in its various forms and ways to reduce your energy consumption. You will also have a chance to pedal our new and improved energy cycle, a bicycle connected to a generator to produce electrical energy.

FAMILY MOVIE NIGHT

Thursdays, March 23
& April 27

6 p.m. Pizza dinner (optional)

6:30 p.m. Movie

Free - dinner \$5 per person

Call to register by the preceding Monday for dinner.

Spend a night eating popcorn and watching a movie near the fire.

March: Never Cry Wolf

April: Fly Away Home

MAPLE SYRUP FOR PRESCHOOLERS

Saturday, March 25

10 a.m. - 12 p.m.

For ages 3-5

\$7 (Members - \$4)

Call to register.

How does barely sweet sap become maple syrup? Come join us as we see, feel, smell and taste our way through the maple sugaring process, from the trees in Riverside Park to the table in the UEC.

DISCOVERY HIKE FOR FAMILIES*

Sundays, March 26
& April 23

1 - 2:30 p.m.

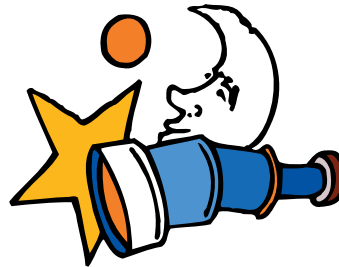
For children ages 3 & up accompanied by an adult

\$7 (Members - \$4)

Families of 4 or more: \$24 (Members - \$12)

Call to register.

Discover nature in a guided walk through the park with activities, games and stories. In case of extreme inclement weather, we will move our hike inside.

**STORIES IN THE STARS**

Friday, March 31

7 - 8:30 p.m.

For children ages 6 & up

\$7 (Members - \$4)

Call to register.

Throughout time, people of many cultures have told stories inspired by the constellations in the night sky. Come hear some of these stories and create your own star legend before heading outside to go star gazing.

4TH ANNUAL PANCAKE BREAKFAST FOR MEMBERS

Monday, April 10

7 - 9 a.m.

For UEC members and their guests only

\$3

Call to register by Friday, April 7th.

Start your week with other Center members and friends enjoying pancakes smothered with fresh maple syrup made right on site from trees in Riverside Park! Space is limited.

NATURE JOURNALING

Sunday, April 30

1 - 2:30 p.m.

For children ages 7 & up

\$7 (Members - \$4)

Call to register.

Do you want a new way to experience nature? Nature journaling tunes our senses to observe things that we wouldn't otherwise notice. We will make our own journals and practice drawing and writing about what we observe outdoors.

SCIENCE SATURDAYS

Every Saturday

Drop in anytime between 9:30 a.m. & 4:30 p.m.

For all ages

Free - donations welcome

Discover the world of science through interactive activities.

March - Frogs: Learn about frogs, one of the signs of spring!

April - Prepare to be amazed! Fun physics and chemistry experiments.

ANIMAL FEEDING TIME

Every Saturday

1 p.m.

For all ages

Free - Donations welcome

Help feed the Center's resident turtles and snakes as you learn about the animals that inhabit the river valley.

ADULT LEARNING

"FUTURE OF FOOD"

Wednesday, March 1
6 - 8:30 p.m.

Presented by the Milwaukee CSA initiative
For adults and accompanied teens
Free - donations welcome
Call to register.

Spend an evening learning about the food we eat. "The Future of Food," an incredibly important documentary, explains in detail the science of genetically modified food and other ways that modern technology and free market capitalism impact our food supply. Join us for a discussion afterwards.

EFFECTS OF GLOBAL CLIMATE CHANGE ON MONARCH BUTTERFLIES

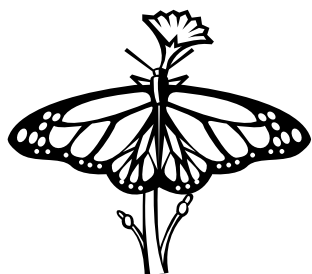
Speaker:

Dr. Karen Oberhauser,
Assistant Professor,
University of Minnesota
Department of Fisheries,
Wildlife and Conservation Biology

Tuesday, March 14
7 - 8:30 p.m.

For adults
\$5 (Members - free)
Call to register.

Monarch butterflies in eastern North America depend upon specific climatic conditions for larval and adult survival while breeding and as they are wintering in Mexico. Using data from a large citizen project and ecological niche modeling, Oberhauser and her colleagues identified these conditions and predicted whether and where the conditions will exist in a changed climate.

**ADULT BIRDING WORKSHOPS: WOOD-WARBLED PART II**

Saturday, March 18
4 - 5:30 p.m.

For adults
\$5 (Members - free)
Call to register.

Now is a good time to start preparing for the spring wave of warblers. We will learn identification tips, natural history facts and look at how humans have viewed warblers through history. We will then go outside for a twilight birdwalk. Binoculars provided.

NORTH WOODS ECOLOGY & BIRDING TRIP*

Saturday, March 25,
8 a.m. - Sunday,
March 26, 8 p.m.

\$55 (Members - \$45)
plus lodging

For adults
To learn about lodging or to register, please call Tim Vargo at x116

Join Research Coordinator Tim Vargo and Bill Mueller from the Wisconsin Society for Ornithology for a glimpse of the ecology and bird communities of late winter. We will look for spruce grouse, black-backed woodpeckers, Bohemian waxwings and redpolls among others. Space is limited.

**eBIRD: BIRDING FOR FUN ... AND FOR SCIENCE**

Thursday, March 30
7 p.m.

For adults
Free - donations welcome
Co-sponsored by Lake Park Friends
Call to register.

Cornell University's Citizen Science-based eBird allows birders to keep personal records of their sightings online while also contributing to an international database used by scientists. Andy Paulios, coordinator of DNR's Wisconsin Bird Conservation Initiative, will demonstrate the simplicity and power of eBird, used to compile data from all of Lake Park and UEC's bird programs.

**BIRD BANDING TRAINING**

Thursday, April 20
7 - 8:30 p.m.

Free - donations welcome
For adults
Call to register.

If your idea of a perfect morning includes getting up before dawn, having a cup of coffee (maybe a little pastry) and bird watching, this group may be for you. Come to this informational session if you are interested in joining a dedicated group of early-risers who get a close look at the feathered nomads that pass through Riverside Park each spring.

BIRD BANDING

Tuesdays, April 25 - May 30

½ hour before sunrise
- noon

For adults and accompanied teens
Free - donations welcome
Please call Tim Vargo at x116 for details and to register.

Few experiences compare with feeling the rapid heartbeat of a bird in your hand while releasing it back to the wild.

Join us for coffee, bakery and an up-close and personal look at birds during spring migration.

**ADULT BIRDING WORKSHOPS: WOOD-WARBLED PART III**

Wednesday, April 26
6 - 7:30 p.m.

For adults
\$5 (Members - free)
Call to register.

Part 3 of our series on Riverside Park's colorful spring travelers. After a brief history and bird identifying tips, we'll go for a twilight birdwalk. Binoculars provided.

SAVE THE DATE!

INTERNATIONAL MIGRATORY BIRD DAY FESTIVAL

Saturday, May 13
10 a.m. - 4 p.m.

• Bird banding • Raptor show • Kids' events • Silent auction • Refreshments
and meet our special guest, Rainbow, the 10-ft.-tall talking bird!

To volunteer, donate items for the silent auction or reserve a display table, contact Kimberley Fein at (414) 964-8505 or kfein@urbanecologycenter.org.

INTEREST GROUPS

EARLY MORNING BIRDWALKS*

Every Thursday
8 a.m.

For adults and accompanied children

Free - donations welcome

Interested bird watchers of all ability levels are invited to join us in exploring for bird life. Binoculars available.

URBAN ECOLOGY CENTER PHOTO CLUB

Thursdays, March 2 & April 6

7 p.m.

For adults

Free - donations welcome

Explore nature in an artistic light and develop new skills.

URBAN STARGAZERS

Thursdays, March 9 & April 13

7 p.m.

For adults

Free - donations welcome

March: *A Brief History of the Moon*. Speaker: Jeffery Bass, Vice President of Education, Public Programs and IMAX, Milwaukee Public Museum. Our nearest celestial neighbor holds clues about the violent history of our solar system, has helped scientists unravel the mystery of how gravity works and was the focal point of the most exciting voyages of exploration in human history. Join us for a brief but fascinating look at the Moon including a glimpse into the future of lunar exploration.

April: Join us for an evening of information and stargazing.

URBAN ECHO POETS

Thursdays, March 9 & April 13

7 p.m.

Free - donations welcome

Welcome to Urban Echo Poets. Our purpose is to observe and experience nature, then to express these observations in poetry and essay. We will read and write and appreciate poetry with images from nature at their core.

WILD ONES

Saturdays, March 11 & April 8

9:30- 11 a.m.

For adults

Free - donations welcome

For more information call (414) 299-9888, x1.

Wild Ones Natural Landscapers educates at the "plants-root" level and promotes biodiversity and environmentally sound practices.

March: *Rain Gardens and Water Conservation Projects*. Ellen Rulseh is with Earth & Water Works, a Madison-based company that designs rain gardens and other water-conservation projects. Ellen's program will focus on rain-garden design and maintenance.

April: *Native Plant Communities*. Richard Barloga, an experienced naturalist with an abundance of information to share, is a frequent presenter to native plant landscaping groups. His slide presentations depict the beauty of individual native plants and the associations native plants have with each other.

VEGETARIAN POTLUCK

Thursdays, March 16 & April 20

6:30 - 8 p.m.

For adults and accompanied children

Free - donations welcome

Bring a plate and fork along with your meatless dish to share at our picnic style meal.

UEC BOOKCLUB

Saturdays, March 25 & April 29

10 - 11 a.m.

Free - donations welcome

Call to register.

The Urban Ecology Center Bookclub will meet once a month to discuss an environmentally-themed book. Join us for conversation and refreshments the 4th Sat. of each month. Participants secure their own books.

March: *A Sand County Almanac* by Aldo Leopold

April: *Prodigal Summer* by Barbara Kingsolver.

VOLUNTEER OPPORTUNITIES

BURDOCK BRIGADE*

Every Tuesday, 9 - 11 a.m. & Saturdays, March 4, 18 & April 1, 15

9 - 10:30 a.m.

For adults and accompanied children

Free

Improve biodiversity in the park by removing alien plant species.

VOLUNTEER ORIENTATIONS

Saturdays, March 11 & April 8

10 a.m. - 12 noon

Thursdays, March 23 & April 27

6:30 - 8 p.m.

Free

Call to register.

Learn about the Center's programs and how to get involved.

NATURALIST WALKS*

Mondays, March 13, 27 & April 10

11 a.m. - 12 noon

Monday, April 24 - Explore Seminary Woods (Meet at the Center)

10:30 a.m. - 12:30 p.m.

For volunteers

Free

Call to register.

Join Center staff on the 2nd and 4th Monday of each month for an hour-long walk through Riverside Park and adjacent green spaces.

Build your naturalist skills and get to know the Center staff on these fun and informal walks.



COMMUNITY CONNECTIONS

If you or your group have a program to share with others, give us a call and we'll consider listing it in this section.

HEALTHY LAWN - CLEAN WATER

Presented by Healthy Communities Project and the Urban Ecology Center and made possible by a grant from the US Environmental Protection Agency

Speakers: Claire Gervais, MD, Family Practice Physician, Karen Sands, MMSSD, Melanie Schave, Natural Landscaper

Saturday, March 11

3 - 5 p.m.

Whitefish Bay High School Cafeteria
1200 E. Fairmount Avenue

Free

Learn how to create a naturally healthy lawn and how to reduce runoff by using rain barrels and rain gardens. Browse information from local businesses and organizations. Enter to win a rain barrel, gardening supplies and other great items. For more information or to register visit www.healthycommunitiesproject.org.

GREAT AMERICAN CLEANUP

Saturday, April 22

9 a.m. - 12 noon

Registration

deadline:

Wednesday, April 19

Be a part of the nation's largest annual community involvement program! Keep Greater Milwaukee



Beautiful will provide garbage bags to neighborhood groups, organizations and businesses who want to participate in cleaning up their neighborhood. Registered volunteers will receive gift certificates from local sponsors and will be eligible to win a Honda Hybrid. Additional opportunities to organize a cleanup in your area are available March 1- May 31. For more information, visit their website www.kgmb.org or call (414) 272-5462, x106.

URBAN ECOLOGY CENTER PROGRAMS

MARCH 2006

Contact the Center for details (414) 964-8505 or visit www.UrbanEcologyCenter.org.
 Hours: Monday - Thursday 9a-7p, Friday - Saturday 9a-5p, Sunday 12 noon-5p

SUNDAY	MONDAY	TUESDAY	WEDNESDAY	THURSDAY	FRIDAY	SATURDAY
			1 9a Building Tour with Ken 10a Walk with Ken 5:30p Building Tour with Beth 6p <i>Future of Food</i>	2 8a Birdwalk 7p Ecology Center Photo Club	3	4 Science Saturdays (every Saturday) topic: Frogs Aldo Leopold Weekend 9a Burdock Brigade 9a Service Project 10a Reading of <u>A Sand County Almanac</u> 1p Animal Feeding
5 12:30p Maple Sugaring in Riverside Park 1p Reading of <u>A Sand County Almanac</u>	6 9a Burdock Brigade 7p Healthy Child-Healthy Planet	7 9a Burdock Brigade 7p Healthy Child-Healthy Planet	8 9a Building Tour with Ken 10a Walk with Ken 5:30p Building Tour with Beth	9 8a Birdwalk 7p Urban Echo Poets 7p Urban Stargazers: A Brief History/Moon	10 8a Birdwalk 7p Urban Echo Poets 7p Urban Stargazers: A Brief History/Moon	11 9:30a Wild Ones: Rain Gardens & Water Projects 10a Volunteer Orientation 1p Animal Feeding
12 1p Storytime in the Park	13 11a Monday Naturalist Walk	14 9a Burdock Brigade 4:30p UEC Board of Directors Meeting 7p Climate Change/ Butterflies 7p Healthy Child-Healthy Planet	15 9a Building Tour with Ken 10a Walk with Ken 5:30p Building Tour with Beth	16 8a Birdwalk 6:30p Vegetarian Potluck 7p Girls' Night Out(doors)	17 7p Friday Fire: John Stano	18 9a Burdock Brigade 1p Animal Feeding 2p Energy Cycle 4p Birding Workshop: Wood-warblers Part II
19 12:30p Maple Sugaring in Riverside Park	20 9a Burdock Brigade	21 9a Burdock Brigade 7p Healthy Child-Healthy Planet	22 9a Building Tour with Ken 10a Walk with Ken 5:30p Building Tour with Beth	23 8a Birdwalk 6:30p Family Movie Night: Never Cry Wolf 6:30p Volunteer Orientation	24	25 North Woods Ecology & Birding Overnight 9a, 10a & 11a Milwaukee River East Bank Trail Info & Hike 10a UEC Book Club: <u>A Sand County Almanac</u> 10a Maple Syrup for Preschoolers 12p CSA Open House 1p Animal Feeding
26 North Woods Ecology & Birding Overnight 1p Discovery Hike for Families	27 11a Monday Naturalist Walk	28 9a Burdock Brigade 7p Healthy Child-Healthy Planet	29	30 8a Birdwalk 7p eBird: Birding for Fun & Science	31 7p Stories in the Stars	

Contact the Center for details (414) 964-8505 or visit www.UrbanEcologyCenter.org.
 Hours: Monday - Thursday 9a-7p, Friday - Saturday 9a-5p, Sunday 12 noon-5p

SUNDAY	MONDAY	TUESDAY	WEDNESDAY	THURSDAY	FRIDAY	SATURDAY
						1 Science Saturdays (every Saturday) topic: Prepare to Be Amazed 9a Burdock Brigade 9:30a Southern Kettle Hiking Trip 1p Animal Feeding
2	3	4	5	6	7	8 9a Milwaukee River History Hike II 9:30a Wild Ones: Native Plant Communities 10a Volunteer Orientation 1p Animal Feeding
1p Storytime in the Park	7a Pancake Breakfast for Members 11a Monday Naturalist Walk	9a Burdock Brigade 4:30p UEC Board of Directors Meeting	9a Building Tour with Ken 10a Walk with Ken 5:30p Building Tour with Beth	8a Birdwalk 7p Ecology Center Photo Club	14	15 9a Burdock Brigade 1p Animal Feeding
		11	12	13		
		9a Burdock Brigade 7p The Find of a Lifetime: Rediscovering the Ivory-billed Woodpecker	9a Building Tour with Ken 10a Walk with Ken 5:30p Building Tour with Beth	8a Birdwalk 7p Urban Echo Poets 7p Urban Stargazers		22 UEC EARTH DAY FESTIVAL 12 noon - 4 p.m. 9a River Clean-up by Canoe 9a Kiwanis Club's River Clean-up 9:30a Annual River to Lake Hike 10a Riverwest Trail Run 1p Animal Feeding
		18	19	20	21	
		9a Burdock Brigade 5:25a Bird Banding 9a Burdock Brigade	9a Building Tour with Ken 10a Walk with Ken 5:30p Building Tour with Beth	8a Birdwalk 6:30p Vegetarian Potluck 7p Bird Banding Training	7p Friday Fire: Earth Poets & Musicians	
		25	26	27	28	29 8a Birding By Canoe 10a UEC Book Club: <u>Prodigal Summer</u> 1p Animal Feeding
		9a Burdock Brigade	6p Birding Workshop: Wood-warblers Part III	8a Birdwalk 5p Girls' Night Out(doors) 6:30p Movie Night: Fly Away Home 6:30p Volunteer Orientation		
		24				
1p Discovery Hike for Families	10:30a Monday Naturalist Walk					
30						
1p Nature Journaling						

THANK YOU FROM THE CENTER

IN-KIND DONATIONS:

Alterra Coffee Roasters - bakery for NEEP program, coffee
 Hoffers Tropic Life Pets - live & packaged animal food
 CyberLynk Network - web hosting
 Janet Anderson - stethoscope, phenology calendars
 Jeff Anderson - candles, triple beam balance
 W. Paul Andre - Coleman outdoor fireplace
 Oscar Bond - snowshoes
 Toni Colla - bird hooks
 Kimberly & Simie Fein - popcorn machine
 David Fenner - book
 Christina Flood - snow pants, boots, coats
 Margee Foulke-Evans - ficus tree
 Dennis Grzezinski - bulletin board
 Carol Johnson - books
 Johnson Outdoors & Steve Van Dis - pdfs
 Beth Kaplan - winter clothes
 Mark & Linda Keane - jacket, snowpants
 Tim Lambrecht - cross country skis & poles
 Marianne Lubar - winter jackets, hats, gloves
 Helen Nett - color printer & supplies
 Theresa Raupp - hand-knit mittens & hats
 Stephanie Sandy - phenology calendar, dish towels
 Kay Schroeter - boots, gloves, & scarf
 Barbara Spalda - lumber
 Mary Stetson - strepladder, sweatpants
 Paul Stuart - unicycle
 Sarah Weltzien - sweatshirt & hat

GIFTS IN HONOR OF

Jennifer Bolger - Ginny & Mike Bolger
 Dianne Dagenen - Janine Arseneau
 Paula & Andy Holman - Dan & Valerie Stefanich
 Lorraine Jacobs - Janine Arseneau
 Susie Kasten - Lissa & Clay Eggie
 Erwin & Joan Russell - Scott Russell

GIFTS IN MEMORY OF

Kelly Malison - Kimberly Fein
 - Diane Malison
 - Kent Malison
 - Kevin Malison

COMMUNITY PARTNERS

Beans & Barley, Deli Market & Cafe beansandbarley.com
 Cambridge Woods Neighborhood Association cambridgewoods.org
 La Lune lalunecollection.com/
 Lake Park Friends lakeparkfriends.org
 Murray Hill Neighborhood Association
 Noodles and Company noodles.com/
 Promotional Products Association ppaw.org/

Trek Bicycle Corp trekbikes.com
 Wheel & Sprocket wheelsandsprocket.com

FOUNDATIONS / CORPORATIONS

Lynde & Harry Bradley Foundation
 Brico Fund Inc.
 Patrick & Anna M. Cudahy Fund
 Gretchen & Andrew Dawes Charitable Trust
 Fleck Foundation
 Forest County Potawatomi Community Foundation
 Foster Family Foundation
 Constance P. Godfrey 2004 Trust
 Godfrey & Kahn Greater Milwaukee Foundation - Enroth Family Fund - Claire & Robert Pflieger Charitable Fund - Walter & Olive Stiemke Fund
 Dorothy Inbusch Foundation
 Lux Foundation
 Milwaukee Metropolitan Sewerage District
 Nasgovitz Family Foundation
 Pollybill Foundation
 Promotional Products Association of Wisconsin
 Quadgraphics
 Sacajawea Charitable Foundation
 David & Julia Uihlein Charitable Foundation
 United Water
 Usinger Foundation
 Weiss Family Foundation

KEYSTONE CLUB MEMBERS

Thank you to our Keystone Club Members for their past and continued support

Janet Anderson
 Else Ankel
 Dr. Felix Ankel
 Bob & Shirley Anthony
 Jeff & Heather Anthony
 Barbara & James Armstrong
 Janine Arseneau
 Julia & J.P. Atterberry
 Daniel & Linda Bader
 Dick & Kay Baldwin
 Roberta Bass
 Clair & Mary Baum
 Jill Baum
 Polly & Robert Beal
 Linda Benfield & Steve Wallace
 Melanie & George Bezold
 Bill & Kathe Biersach
 Ginny & Mike Bolger
 Jennifer Bolger
 Anne Booth & Charles Trainer
 Cheri & Thomas Briscoe
 Ralph Bronner
 David & Diane Buck
 Dick Burke
 Barbara J. Carson
 Dennis & Jean Casper
 Monique Charlier
 Tom & Judy Christofferson
 John & Christi Clancy
 Mark Clausen & Alice Jo Starr
 Joan & Ron Cook
 Mario & Cathy Costantini
 Tim & Leslie Dixon
 Roman Draba
 Tom & Bette Drought
 Steven R. Duback
 Ginger Duiven
 Storm Elser
 Robert & Barbara Elser
 Dave & Ann Erne
 Kimberly & Simie Fein
 Beth Fetterley
 Dan & Pat Fetterley
 Eileen & Dennis Fisher
 Paul Fleckenstein
 Kim Forbeck & Todd Dunsim
 Chris & Jude Ford
 Suzy & Byron Foster
 Harry & Mary Franke
 Tina Garcia y familia
 Shel & Danni Gendelman
 Patrick Geraghty & Family
 Leslie Grinker
 Gary & Anne Grunau
 Dennis Grzezinski & Jane Porath
 Ann & Jon Hammes
 Edward J. Hammond & Marcia Brooks
 Philip & Connie Hardacre
 David & Margaret Harvey
 Mick & Lisa Hatch
 Jill & Mal Hepburn
 Paul Hunter & Sophie Kramer
 Kate Huston
 Mary Ann Ihm
 Lorraine Jacobs
 Carolyn Jacobus
 Bob & Diane Jenkins
 Edna Johnson
 Dana & Robert Kaleta
 Claire & Robert Kaleta
 Pam Kassner & Bill Ochowicz
 Susie & Fred Kasten
 Mary & Ted Kellner
 Jim & Liesa Kerler
 Bruce & Diane Keyes
 Linda A. & Jerry R. Kilmowicz
 Brian & Linda Kliesmet
 Jillian Kohler
 Joanne Kolodzik
 Judy Krause
 Jerry & Kathy Krause
 Harvey Kurtz & Yvonne Larne
 Sarah & Jess Langerman
 Ken & Shauna Leinbach
 Paula Leinbach
 Sally J. Lewis
 Christy & John Librizzi & Family
 Jean S. Lindemann
 Mrs. Helen L. Loewi
 Anne & Fred Luber
 Lisa & Steve Lyons
 Gerald & Elaine Mainman
 Barbara Manger & William Lynch
 Jan & Vince Martin
 Mr. & Mrs. Daniel F. McKeithan
 David Meissner
 Linda T. Mellowes
 Martine D. Meyer
 John Miceli & Tami Quinlan
 Paul & Pam Miller
 Scott & Marjorie Moon
 Larry & Judy Moon
 George A. & Julie A. Mosher
 Patricia H. & George N. Mueller
 Marian Nasgovitz & Family
 Rebecca North & Adolph Paul
 Robert & Christine Nuernberg
 Kate & Jerry Parent
 John & Susie Pauman
 Connie & Gene Pemrich
 Jim & Gwen Plunkett
 Gail Povey
 Edward & Harriet Purrell, Jr
 Mr. and Mrs. William L. Randall
 Miriam Reading & Richard Miller
 Charla Reetz
 Dave & Roberta Remstad
 Lucy & Jack Rosenberg
 Bill & Eva Rumpf
 Barb Sadowski
 Stephanie Sandy & Allan Montezon
 Mark & Alice Sandy
 Jim & Nancy Schacht & Family
 Kathleen & Thomas Schrader
 Earl Schrader
 Phil Schultz & Melissa Mooney
 Marsha Schler
 John & Laurel E. Shea
 Darrell Smith & Tim Vargo
 Katherine M. Smith
 Katie & Phil Smith
 Michael & Joan Spector
 Robin Squier
 Timothy & Vickie Strattnier
 Anne Stratton
 Gary & Jocelyn Steinhafel
 Barbara & Susan Strecker
 Gus & Alden G. Taylor
 Anna & Richard Teerlink

Stu & Ann Tisdale
 Sally M. Tolan
 Jim T. & Julie Tynion III
 David & Julia Uihlein
 Debra Usinger
 D. Michael & Orchard Utzinger
 William & Polly H. Van Dyke
 George & Deanna Wardeberg
 Carolyn Washburne
 Sheldon & Wendy Wasserman
 Mr. & Mrs. Richard Weiss
 Joseph P. & Ann Wenzler
 Paul Westphal & Lisa Moy-Westphal
 James B. & Elizabeth Wigdale, Sr.
 Ted & Barbara Wiley
 Pat & Harvey Wilmeth
 Susan Winans
 Wayne & Kathleen Wolski
 Kenneth & Karen McDiarmid Yontz
 Andrew A. & Carlene M. Ziegler
 Bettie Zillman

NEW CHANGE!

In this section we previously acknowledged new or renewing members. With our vastly growing membership, we are unable to print every name in the space allowed. Please watch for our Annual Report which will list our membership. The following is a list of those who gave more than their membership since the last newsletter.

Patty & Gary Ahrens
 Robin Ahrens & William Dosemagen
 W. Paul & Deanna C. Andre
 Constance Arnosti
 Nancy Aten & Dan Collins
 Eva Baez
 Judith S. Banzhaf
 Julianne R. Bauer
 Natalie & David Beckwith
 Joseph Bernstein
 Cherith Bevers
 Richard Birch & Elisa Castellon
 Susan Blaustein
 Steve Books
 Jacqueline Boynton & Peter McAvoyn
 Donna & Mike Brady
 Mr. & Mrs. Arthur S. Brooks
 Tim Burch
 Nancy L. Burns
 Tim, Amy & Rob Cary
 Mary Catherine Hanley
 Brian Christoffel
 Jean & Tom Churchill
 David Cobb
 Marty Collins
 Linda A. Corbin-Pardee
 Brian J. Cummings
 John & Karen deHartog
 Anne DeLeo & Patrick Curley
 Mike DeWan
 Karla DiGesú & Darrin Engel
 Michael Dillon
 Michael Drew & Alice Hanson-Drew
 David & Roberta Drews & Family
 Ellen Drought
 Patriq & Tricia DuSaint
 Ellen Eckman
 Clayton & Lissa Eggie
 Samuel & Jennifer Essak
 Katie Eyes & Todd Mesibov
 Gregory & Rebecca Felsheim & Family
 David Fenner
 Judith Fetterley
 Jim Fitzgerald
 Scott & Barbara Fleming
 Lilith & Lincoln Fowler
 Dorothy Foy
 Tim & Sue Frautschi
 David & Lisa Froiland
 Henry & Barbara Fuldner
 Kathleen Gallick
 Philip A. Grau
 Michael Grinker & Sharon Lerner
 John Gurda & Sonja Nelson-Gurda
 Don Haack & Karen Smith
 James & Rochelle Hagen
 Paul & Mary Beth Haubrich
 Timothy Hawks
 & Mary McCormick
 Joan B. Hawley
 Rae Heiple
 Peter & Sue Hitler
 Gerald & Barbara Hussin
 Steve & Larri Jacquart
 Jan Jensen D.C.
 Joe Juknialis
 Brett L. Kernnitz
 Erin Kennedy Elliott
 Alan Kesner
 Kathlynn & Jay Kirk
 Helen Kittsley
 Linda A. Kopecky
 Mary E. Kremer
 Joel Kriofske
 Ely Leightling & Sally Merrell
 Diane Lindsley
 Theresa Lins
 John & Martha Lutz
 Kent Malison
 Mary E. McAndrews
 Barbara McDonald
 Peter & Roselyn McMullen
 Mike Migliano
 Joyce & Brian Miller
 Steve Morse & Jane Waldbaum
 Rosemary Muller
 Kathleen Mulligan Hansel
 Kate Muth
 Mark Nicolini
 John Norquist & Susan Mudd
 Rosina & Andy Norton
 James & Christine O'Brien
 John & Nancy O'Donnell
 Frederick L. & Elizabeth N. Ott
 Peter Overholt & Gail Epping Overholt
 Diane Pellegrin
 Glenn & Jayne Pelton
 Matthew & Zulma Peters
 Claire S. Pflieger
 Tom & Terri Pier
 David Pritchard & Kathy Rogers
 Keith & Patricia Prochnow
 David A. Rasmussen
 Ann Reading
 Mary P. Reavey
 John Reiss
 Ruth Renzelmann
 Stephen E. & Frances S. Richman
 Dr. Roberta S. Wallace
 Suzanne & Adolph Rosenblatt
 Veronica M. Rusnak-Wensing
 Mark E. Ryan
 Karen & Peter Sands
 James A. Schacht
 Mona Schroeder-Beers
 Judith Grace Scott
 John & Susan Scripp
 Paul Seifert & Amy Weisbrot
 Kevin Shafer
 Patricia Sibbensen & Max Wellenstein
 Peggy Silvestrini
 Rebecca & Brad Simenz
 Susan & Thomas Slocum
 Regina Smith
 George & Linda Solveson
 Debra A. Stamp-Schrader
 Anne Steinberg & Eric Hansen
 Barbara Steiner
 Martin Steren
 David & Nancy Stone
 Marvin Summers
 William & Nicole Teweles
 Carl & Nancy Trimble
 Pastor Greg & Ann Van Dunk
 Elizabeth Vandervest
 Vince Vukelich
 James W. Walczak
 Anna, Leon & Ian Walls
 Patricia H. Weisberg
 Scott R. Winkler
 Diane Wright
 John & Mary Young

JOIN OUR COMMUNITY TODAY!

MEMBERSHIP

Membership benefits include discounts on programs, invitations to members only events, the ability to borrow our equipment, a one year newsletter subscription and more.

For information, visit our website at www.UrbanEcologyCenter.org.

Choose one:

- Individual (\$25) includes guest
- Family (\$35)
- Student (\$12)

Financial assistance is available. Please call Ginger Duiven, Membership Coordinator at x106 or gduiven@urbanecologycenter.org for details.

DONATION (IN ADDITION TO MEMBERSHIP)

Please accept my gift to support:

- A community program (\$50)
- One half day for a school class (\$125)
- One full day for a school class (\$250)
- A Citizen Science project (\$500)
- Improved Riverside Park trails (\$1,000)
- A school for one year (\$3,000)
- Other \$ _____

Total Enclosed \$ _____

Name _____

Address _____

City _____

State/Zip _____

Phone _____

Email _____

I would like to volunteer. Please call me.

Charge my membership to: Master Card Visa

Card Number _____ - _____ - _____ - _____

Expiration Date ____/____

Signature _____

Date _____

Please make your check payable to:

Urban Ecology Center and return it with this form to:

Riverside Park, 1500 E. Park Place
Milwaukee, Wisconsin 53211
www.UrbanEcologyCenter.org



EARTH DAY AT UECI SATURDAY, APRIL 22



Riverside Park
1500 E. Park Place
Milwaukee, WI 53211



Non-Profit Org.
U.S. Postage
PAID
Milwaukee, WI.
Permit
No. 5190